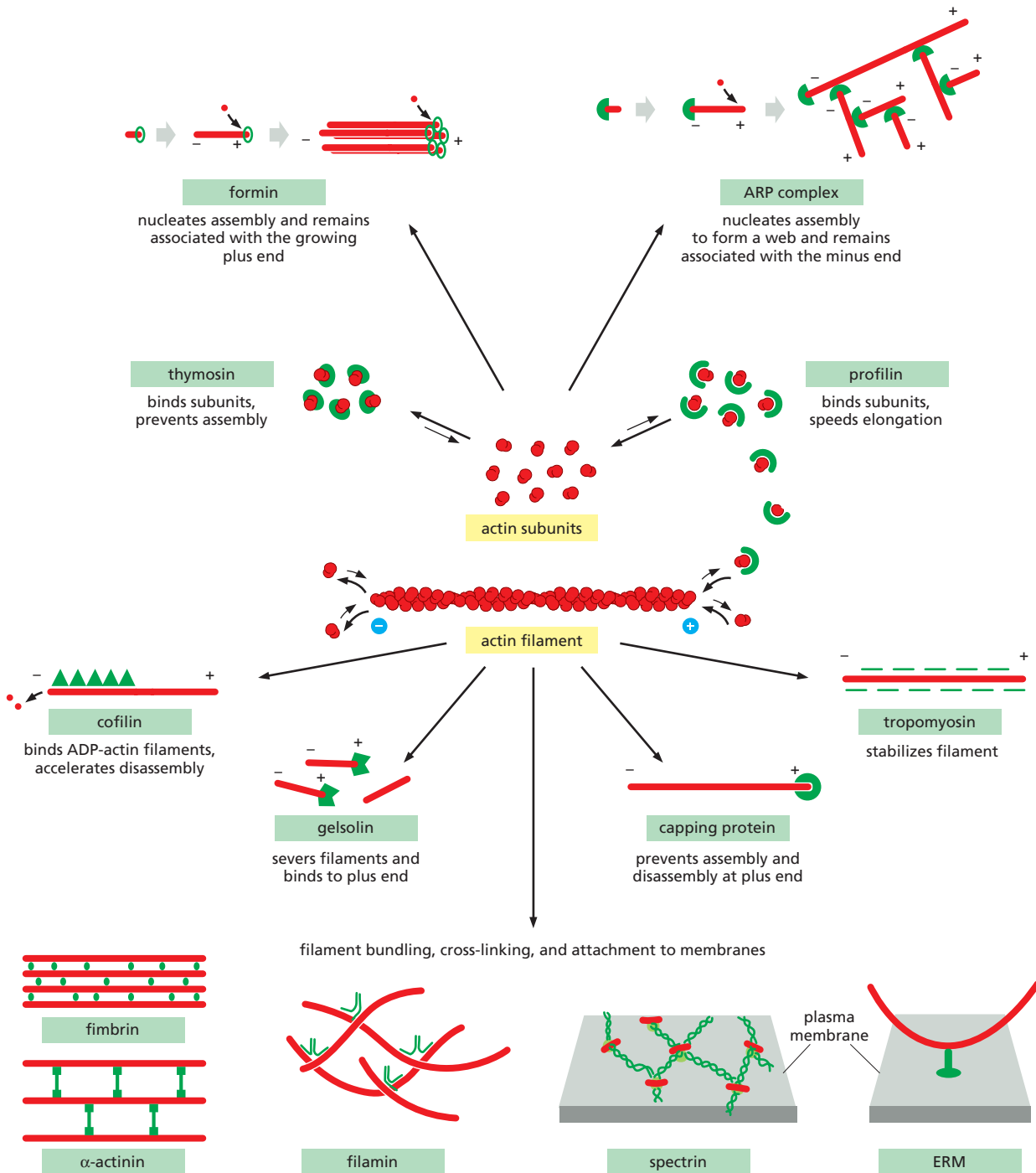
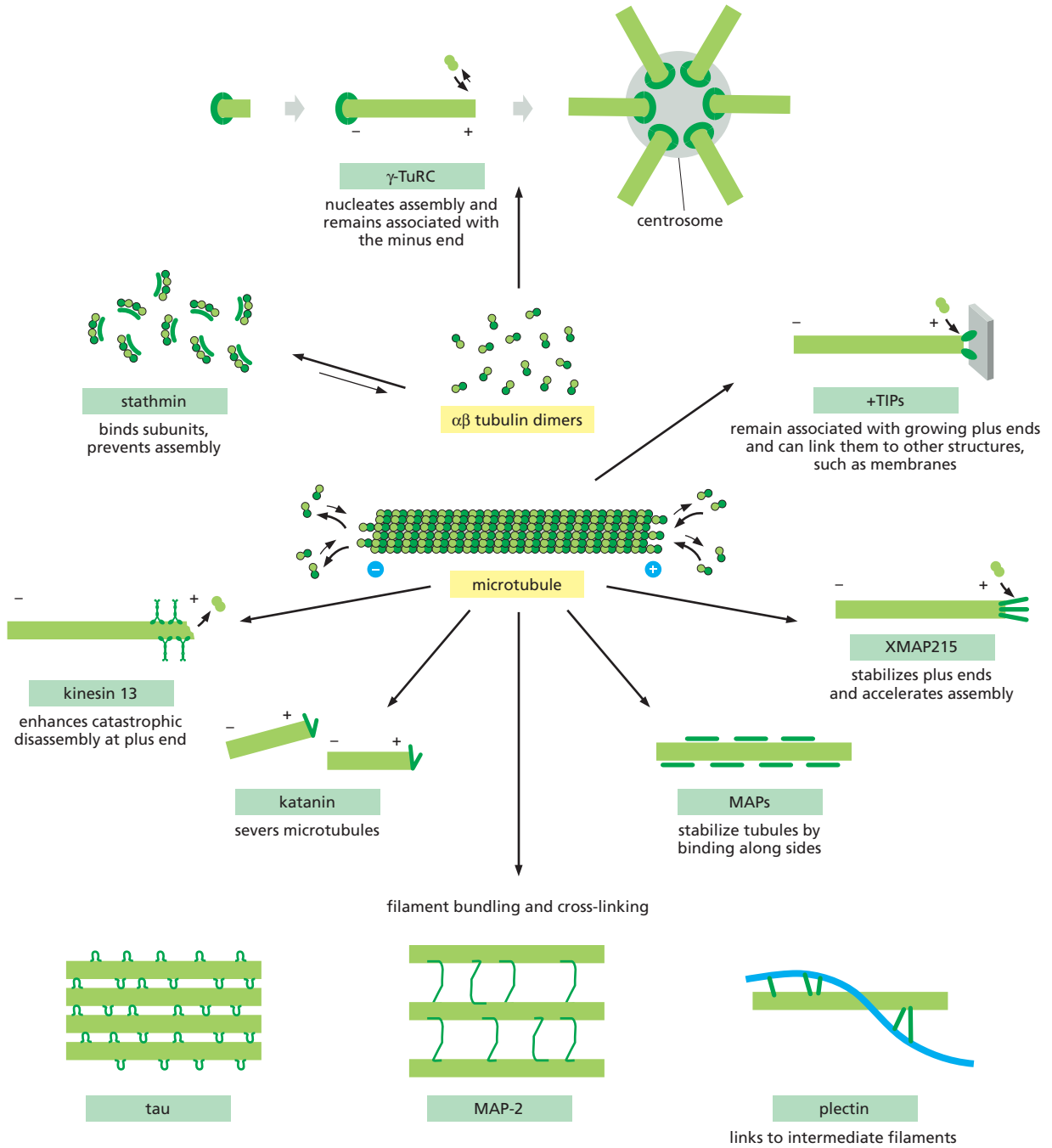


ACTIN FILAMENTS



Some of the major accessory proteins of the actin cytoskeleton. Except for the myosin motor proteins, to be discussed in a later section, an example of each major type is shown. Each of these is discussed in the text. However, most cells contain more than a hundred different actin-binding proteins, and it is likely that there are important types of actin-associated proteins that are not yet recognized.

MICROTUBULES



Some of the major accessory proteins of the microtubule cytoskeleton. Except for two classes of motor proteins, to be discussed in a later section, an example of each major type is shown. Each of these is discussed in the text. However, most cells contain more than a hundred different microtubule-binding proteins, and—as for the actin-associated proteins—it is likely that there are important types of microtubule-associated proteins that are not yet recognized.