

# GRÁFICOS

## INTRODUCCIÓN A LA ECONOMÍA / MACROECONOMÍA Y POLÍTICAS PÚBLICAS

---

Profesor Alfie Ulloa

---

Ayudante Ismael Herrera C.

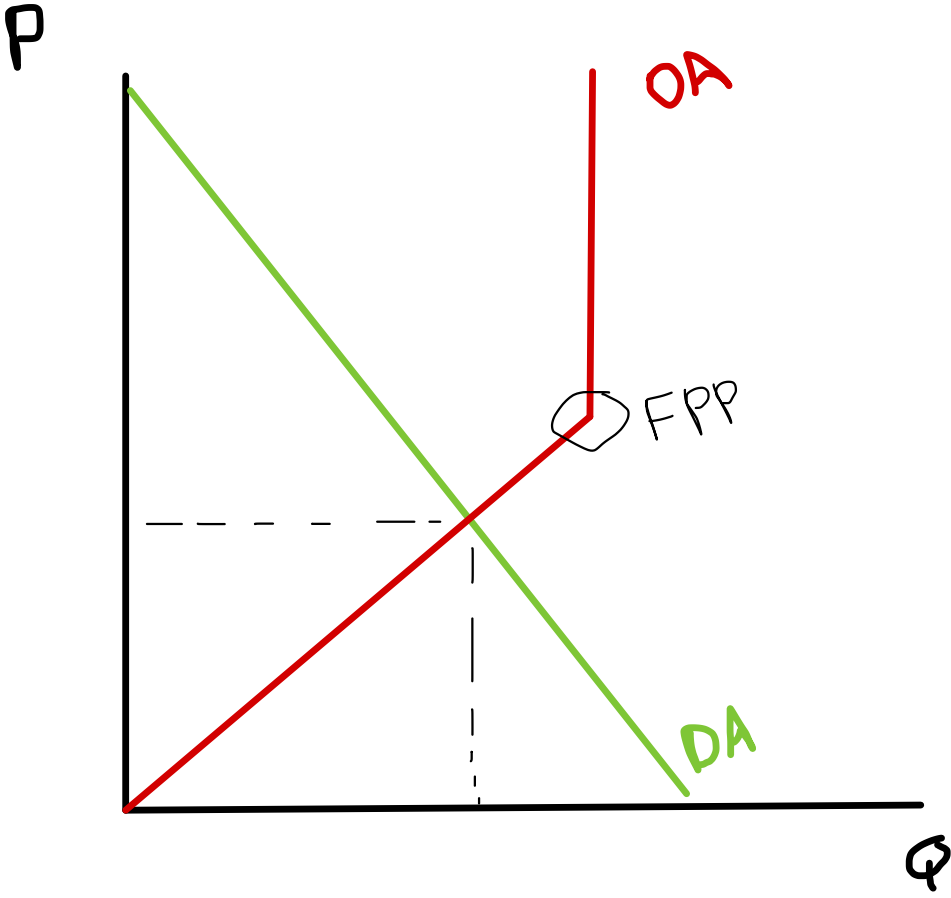
---

2024

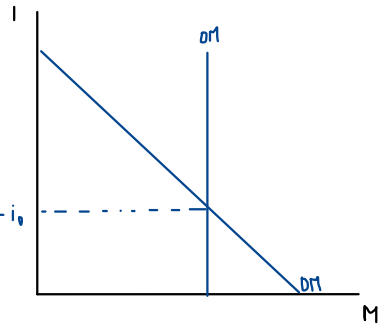
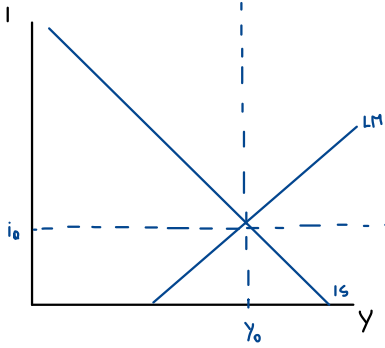
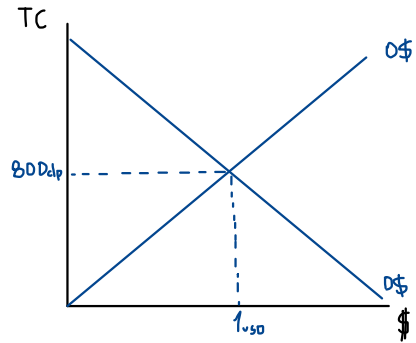
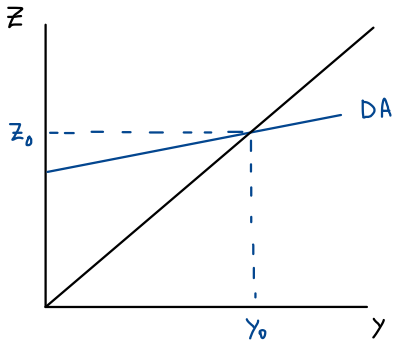
---



GRÁFICO MACROECONÓMICO



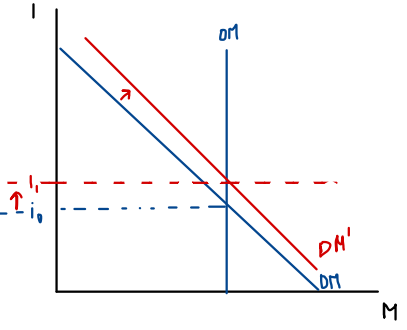
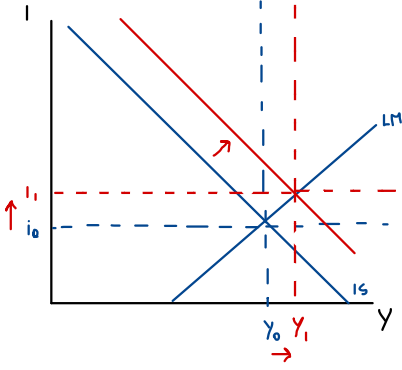
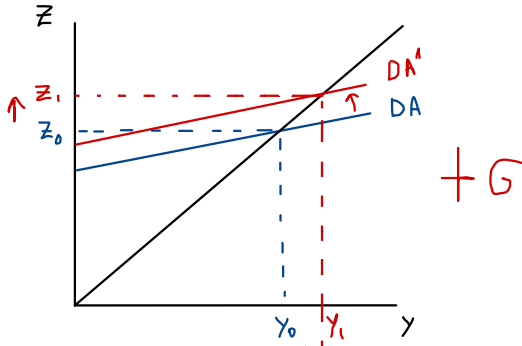
plantilla gráficos




# ECONOMÍA CERRADA

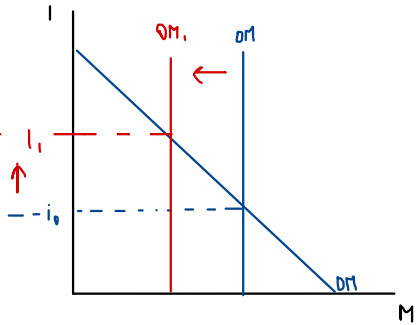
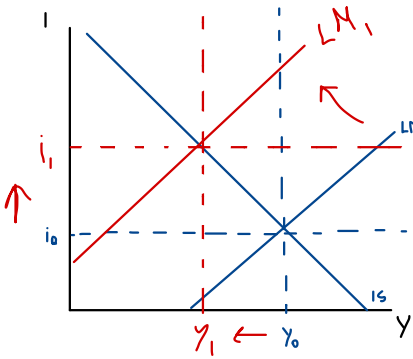
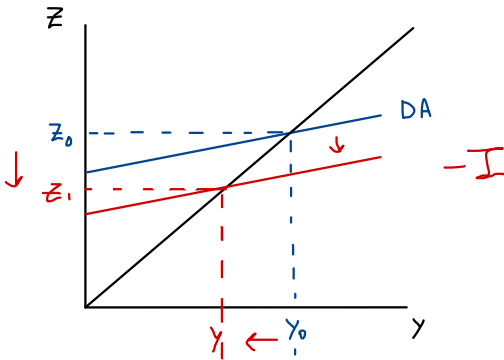
econ. cerrada, pol. fisc. exp.

$\Delta+G \rightarrow \Delta+Z \rightarrow \Delta+Y \rightarrow IS \rightarrow \Delta+i$



econ. cerrada, pol. mon. contr.

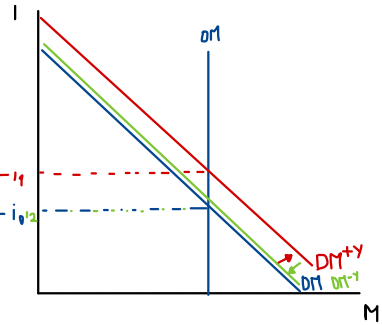
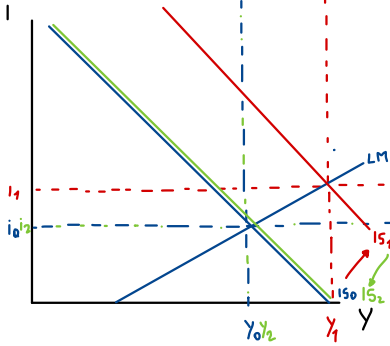
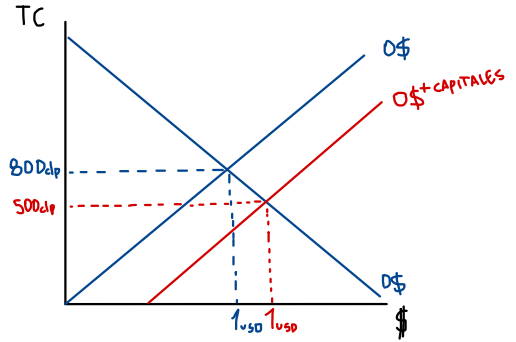
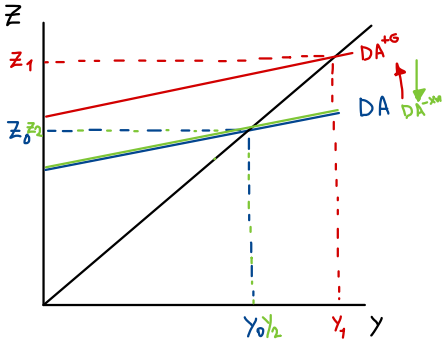
$\Delta-OM \rightarrow \Delta+i \rightarrow \Delta-I \rightarrow \Delta-Z \rightarrow \Delta-Y \rightarrow LM$  



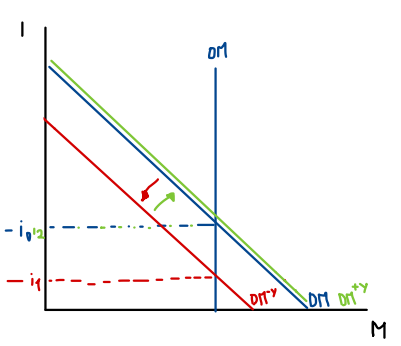
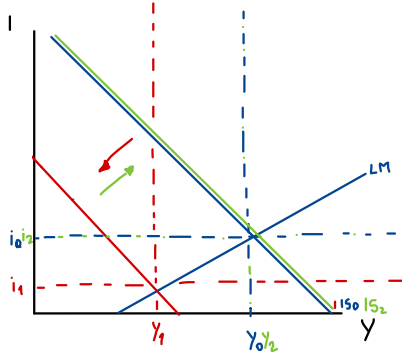
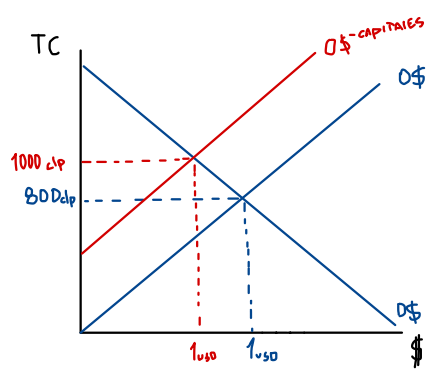
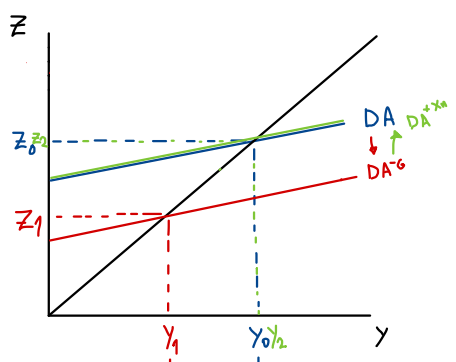
# ECONOMÍA ABIERTA

## TC FLEXIBLE

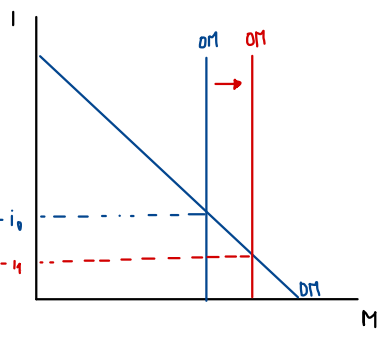
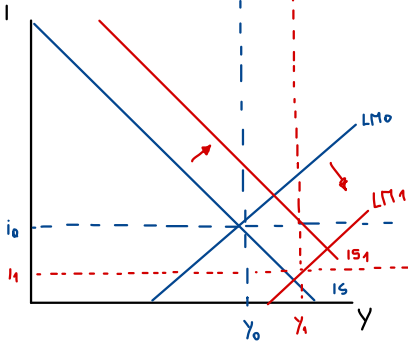
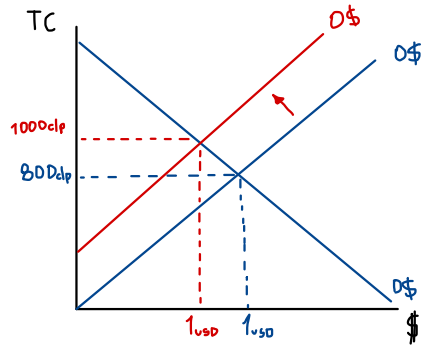
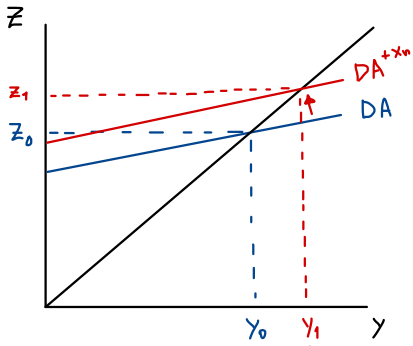
econ. abierta, pmc, tc flexible, pol. fis. exp.



econ. abierta, pmc, tc flexible, pol. fis. contr.

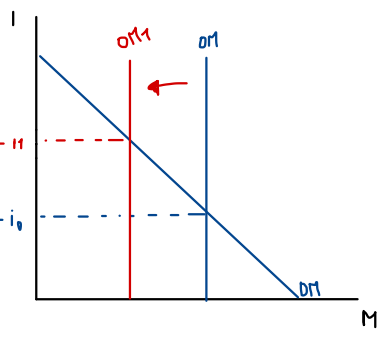
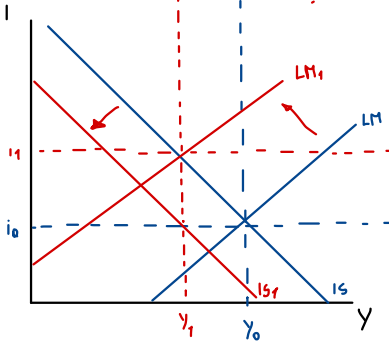
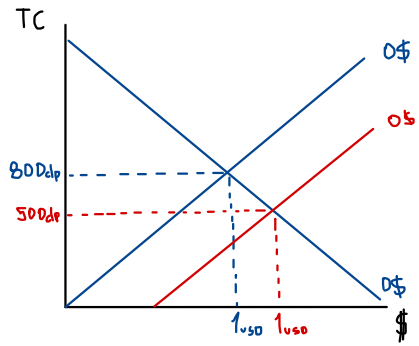
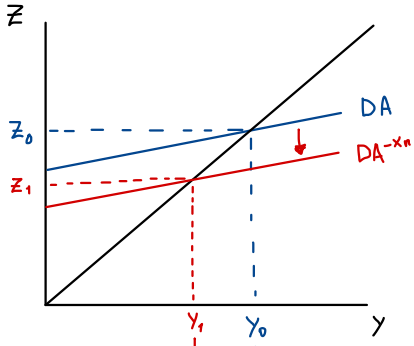


econ. abierta, pmc, tc flexible, pol. mon. exp.



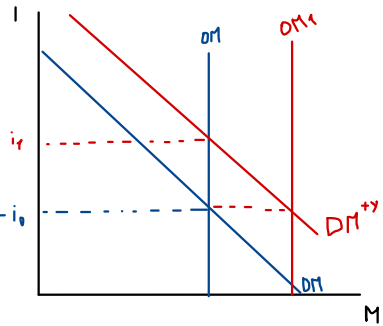
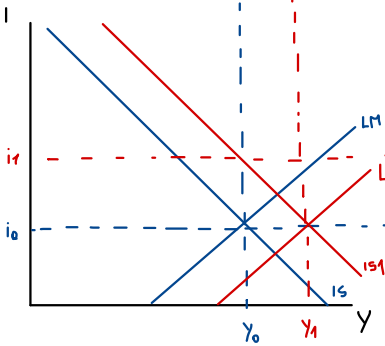
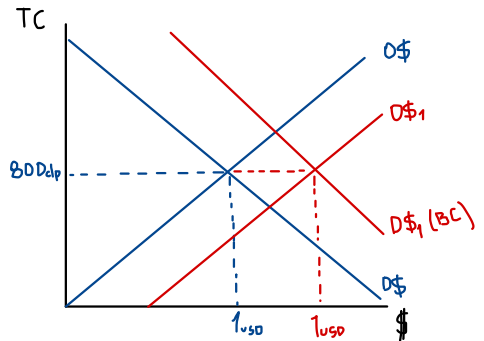
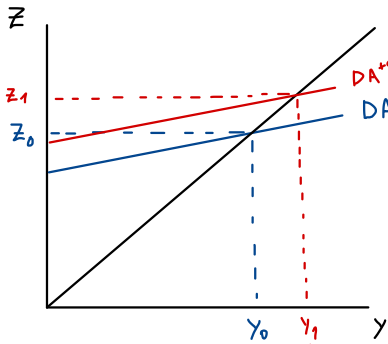


econ. abierta, pmc, tc flexible, pol. mon. contr.



# TC FIJO

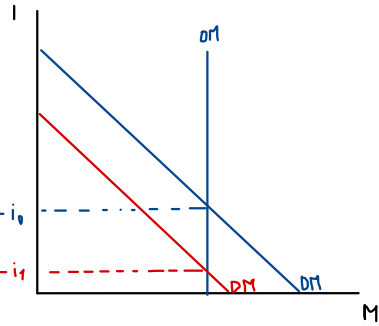
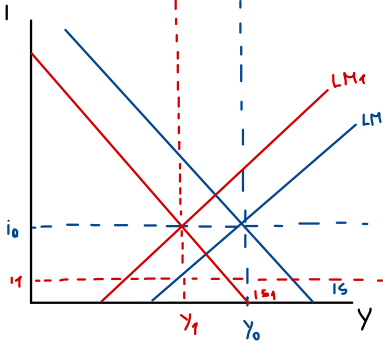
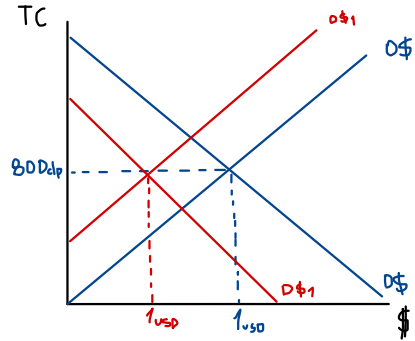
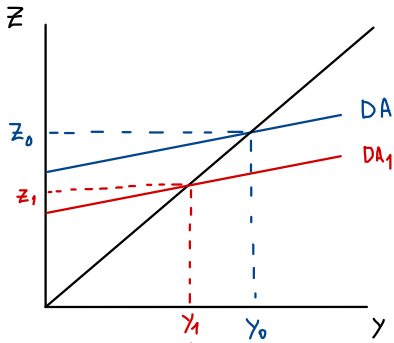
econ. abierta, pmc, tc fijo, pol. fis. exp.



$\Delta+G \rightarrow \Delta+DA \rightarrow \Delta+Y \rightarrow \Delta+DM \rightarrow \Delta+i \rightarrow IS \rightarrow \Delta+\text{capitales}$

$\Delta+\text{capitales} \rightarrow \Delta+O\$\$ \rightarrow \Delta+D\$\$ \rightarrow \Delta+OM \rightarrow LM \rightarrow \Delta+Y$

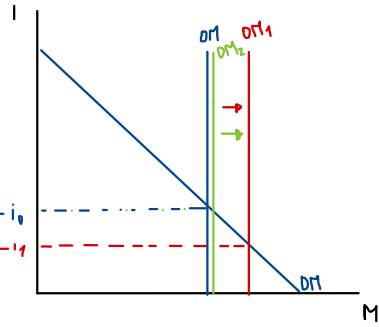
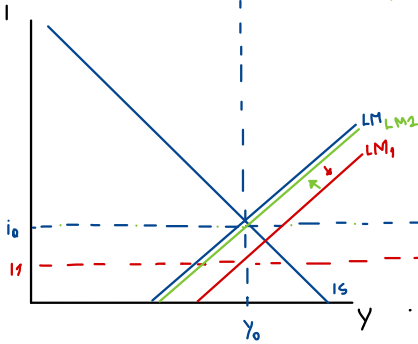
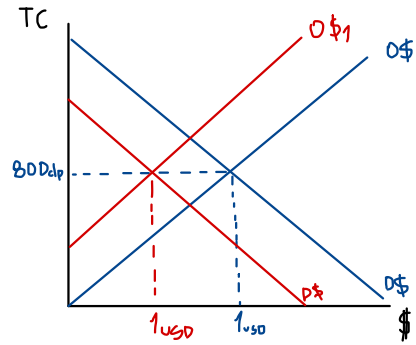
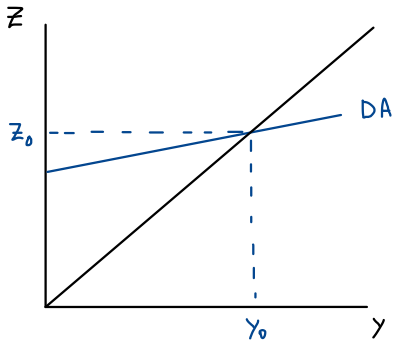
econ. abierta, pmc, tc fijo, pol. fis. contr.



$\Delta-G \rightarrow \Delta-DA \rightarrow \Delta-Y \rightarrow \Delta-DM \rightarrow \Delta-i \rightarrow IS \rightarrow \Delta\text{-capitales}$

$\Delta\text{-capitales} \rightarrow \Delta-O\$ \rightarrow \Delta-D\$ \rightarrow \Delta-OM \rightarrow LM \rightarrow \Delta-Y$

econ. abierta, pmc, tc fijo, pol. mon. exp.

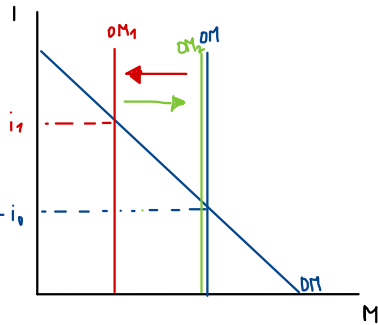
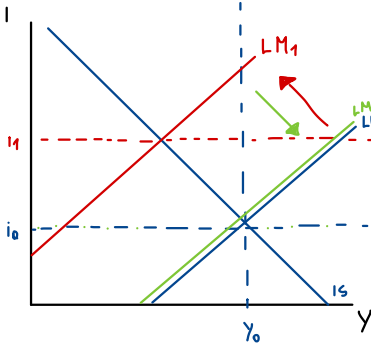
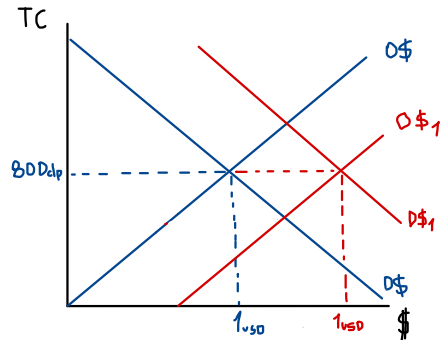
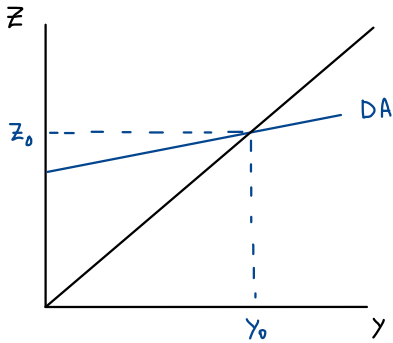


$\Delta+OM \rightarrow \Delta-i \rightarrow LM \downarrow \rightarrow \Delta-$  capitales

$\Delta-$  capitales  $\rightarrow \Delta-O\$\rightarrow \Delta-D\$\rightarrow \Delta-OM \rightarrow \Delta+i \rightarrow LM \leftarrow$

No tiene efecto en el producto

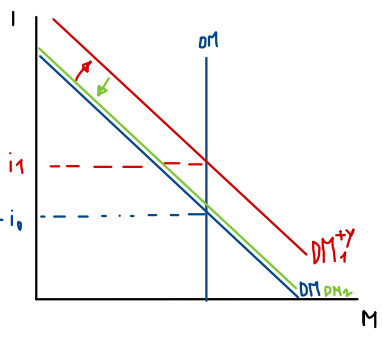
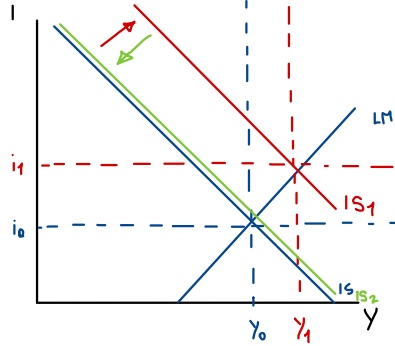
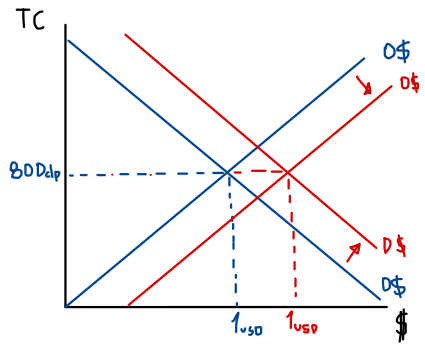
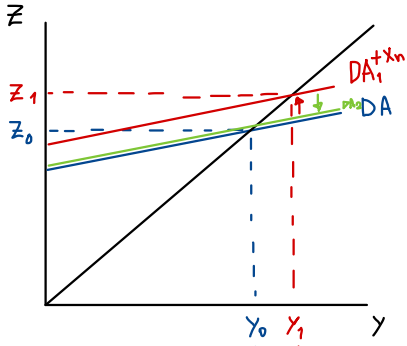
econ. abierta, pmc, tc fijo, pol. mon. contr.



$\Delta - OM \rightarrow \Delta + i \rightarrow LM \leftarrow \rightarrow \Delta + \text{capitales}$

$\Delta + \text{capitales} \rightarrow \Delta + O\$ \rightarrow \Delta + D\$ \rightarrow \Delta + OM \rightarrow \Delta - i \rightarrow LM \rightarrow$

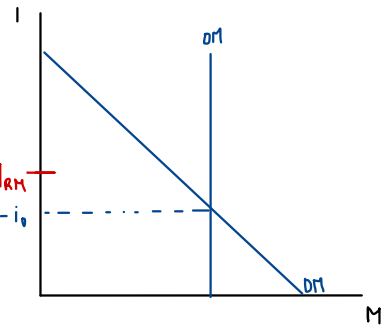
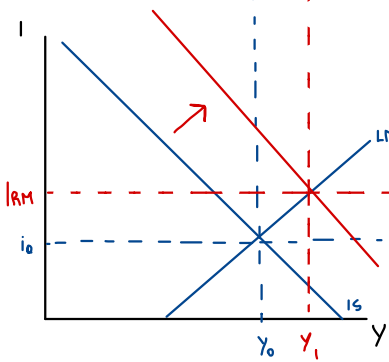
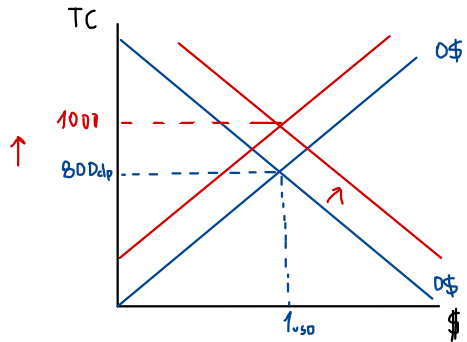
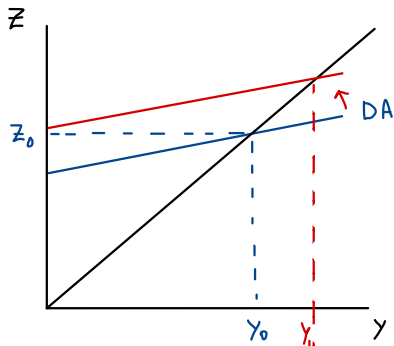
No tiene efecto en el producto



# SI EL RESTO DEL MUNDO VARÍA LA TASA DE INTERÉS

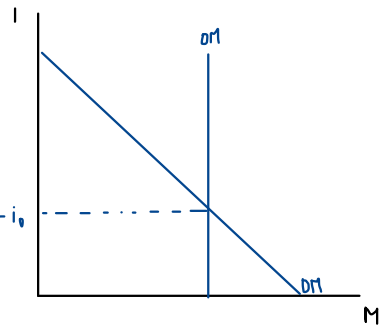
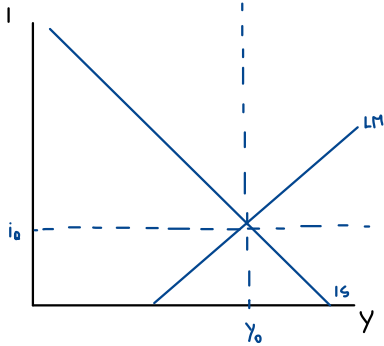
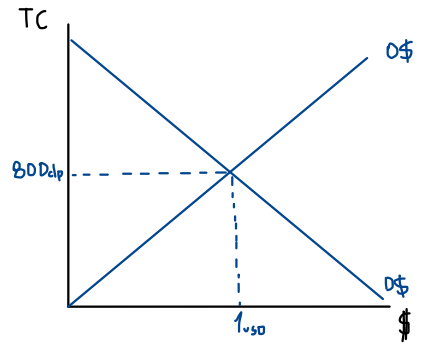
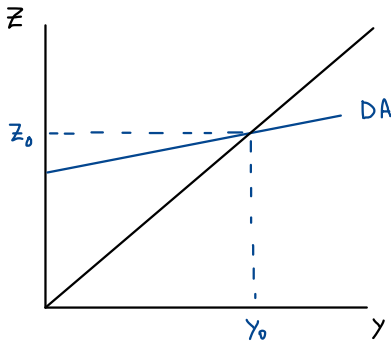
$$i < i(RM)$$

$\Delta$ - capitales  $\rightarrow \Delta$ -O\$,  $\Delta$ +D\$  $\rightarrow \Delta$ +TC  $\rightarrow \Delta$ +X,  $\Delta$ -M  $\rightarrow \Delta$ +Xn  $\rightarrow \Delta$ +Z  $\rightarrow$  IS hasta la  $i(RM)$

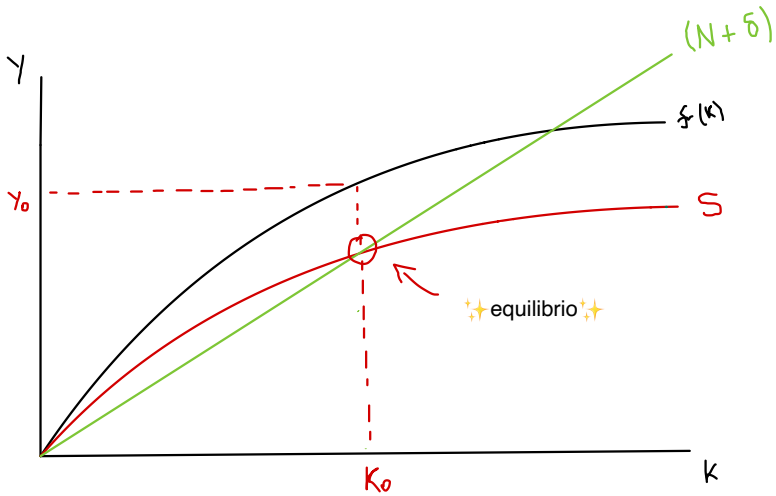
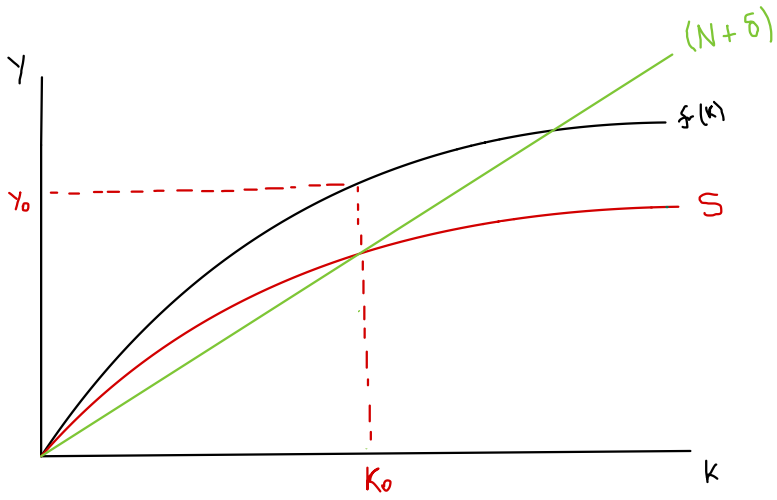


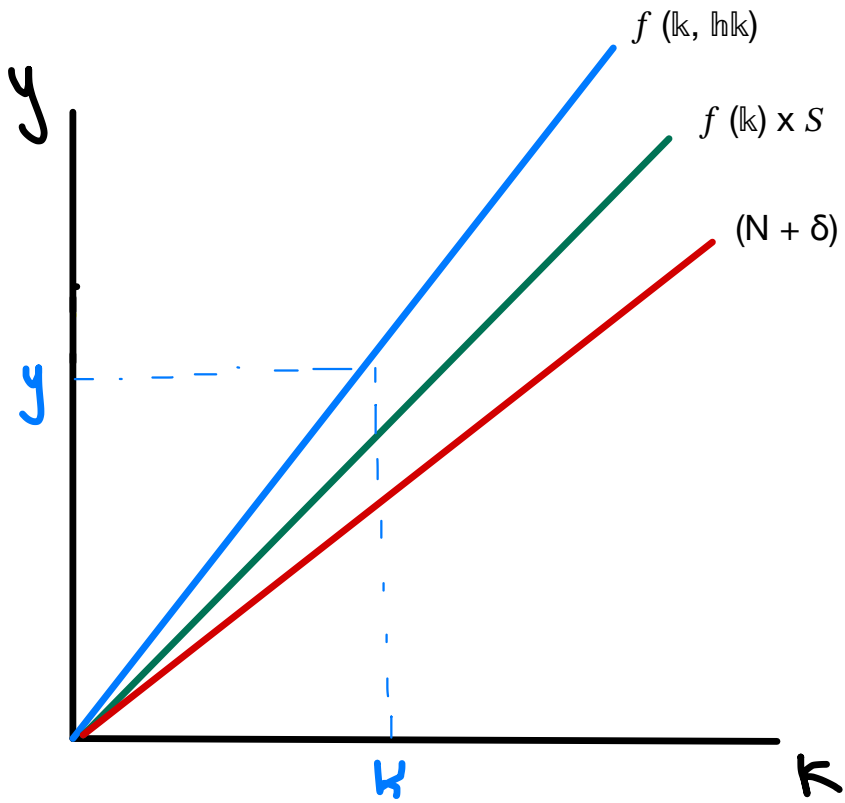
$$i > i(\text{RM})$$

$i \Delta + \text{capitales} \rightarrow \Delta + \text{O}\$, \Delta - \text{D}\$ \rightarrow \Delta - \text{TC} \rightarrow \Delta - \text{X}, \Delta + \text{M} \rightarrow \Delta - \text{Xn} \rightarrow \Delta - \text{Z} \rightarrow \text{IS hasta la } i(\text{RM})$

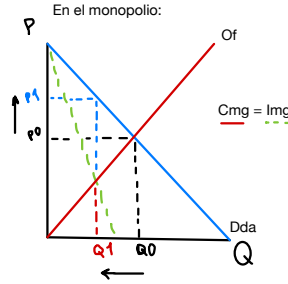
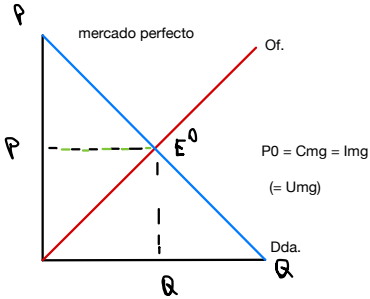




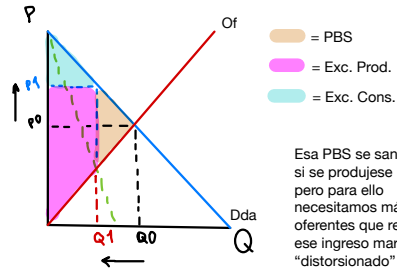




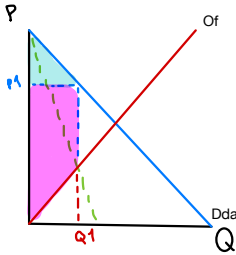
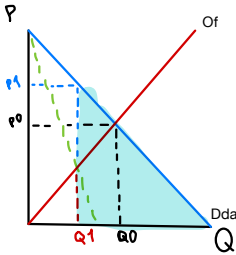
# Monopolio



Excedentes y PBS:

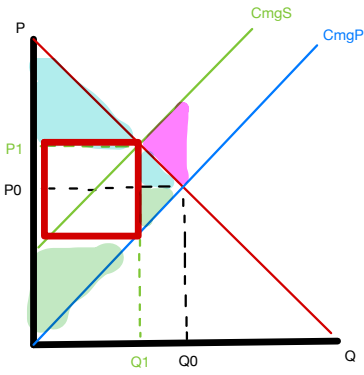


Esa PBS se sanearía si se produjese más, pero para ello necesitamos más oferentes que regulen ese ingreso marginal "distorsionado"

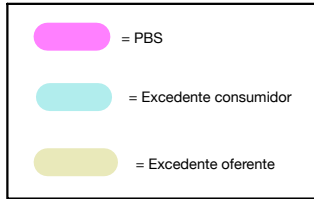
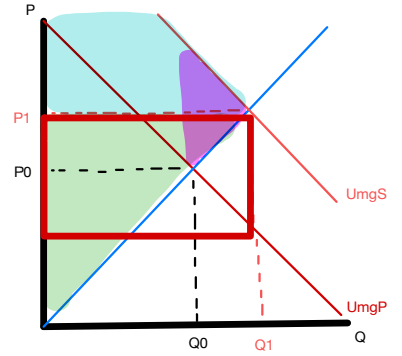


# EXTERNALIDADES

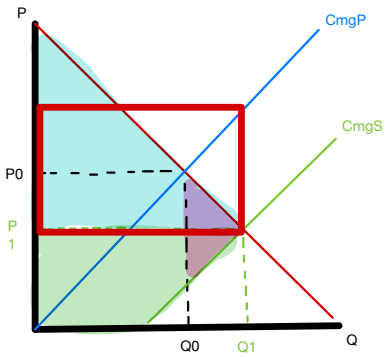
Ext. Neg. Prod.



Ext. Pos. Cons.



Ext. Pos. Prod.



Ext. Neg. Cons.

