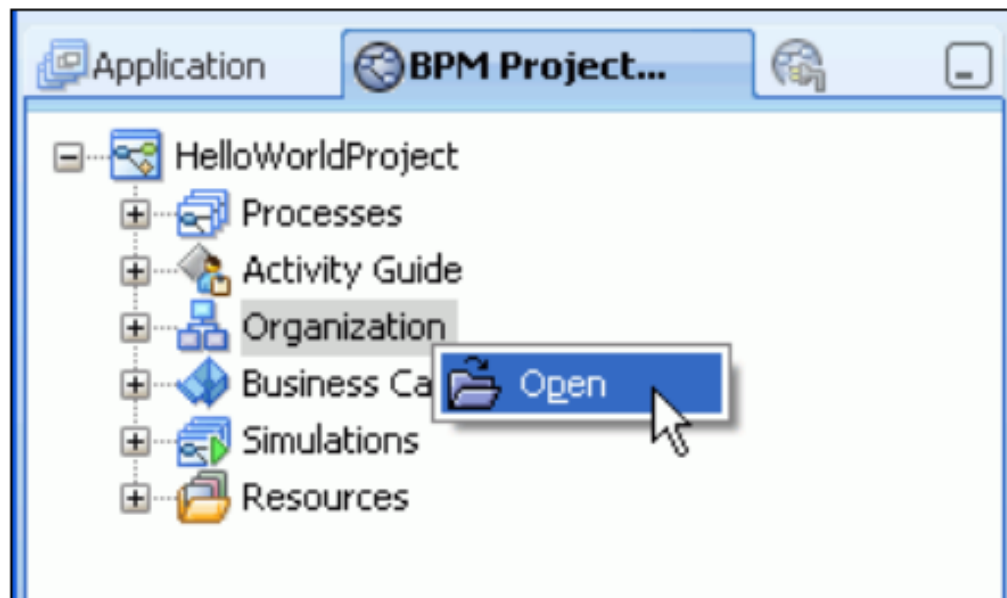


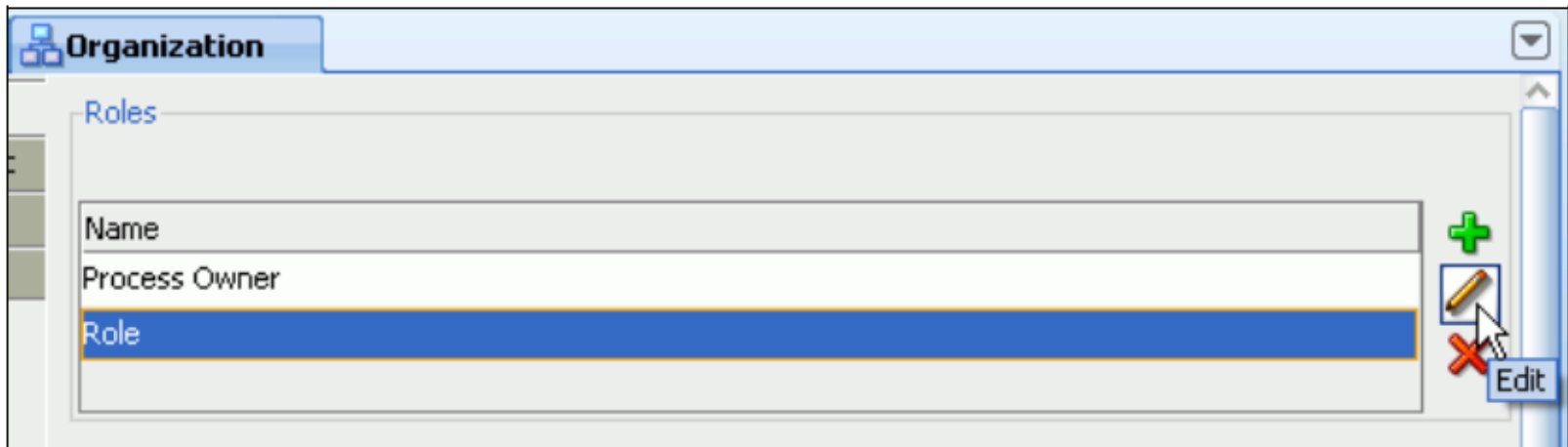
Laboratorio Oracle BPMN Escalamiento

IN79Ñ-1

EDWIN VARGAS – edwin.vargas@i2b.cl

CARLOS REVECO – creveco@dcc.uchile.cl





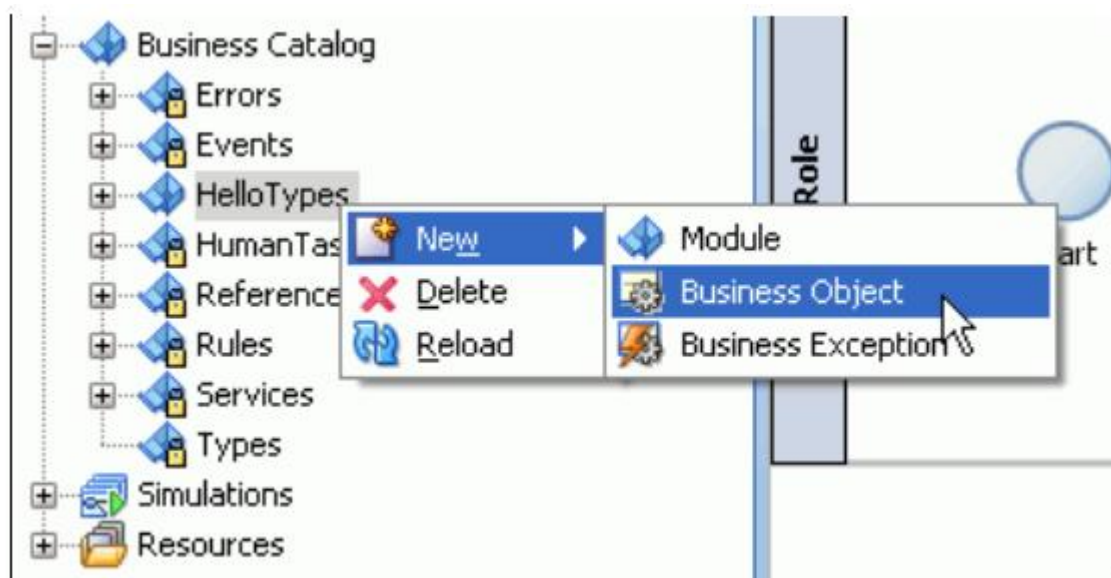
The image shows a standard Windows-style dialog box titled "Role". The title bar is blue and contains the text "Role" on the left and a red close button (an 'X' in a square) on the right. Below the title bar, the main area has a light gray background. On the left side of this area, the text "Name:" is followed by a text input field. The input field contains the word "Requester" and has a blue selection highlight over it. At the bottom of the dialog box, there are three buttons: "Help" on the left, "OK" in the center, and "Cancel" on the right. All buttons have a light gray background and a subtle 3D effect.

Role

Name: Requester

Help OK Cancel





Create Business Object



Business Object

Name:

HelloObject

Destination Module:

HelloTypes



Based on External Schema



Help

OK

Cancel

Attribute Name	Type
review	String
reason	String

Business Object

Description:

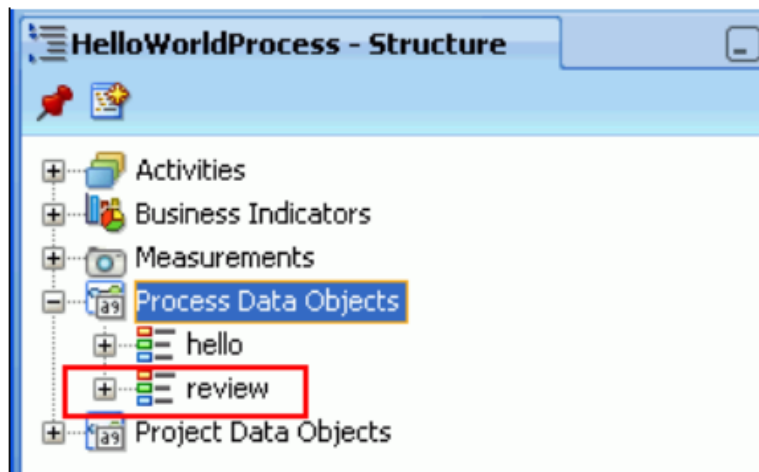
Documentation:

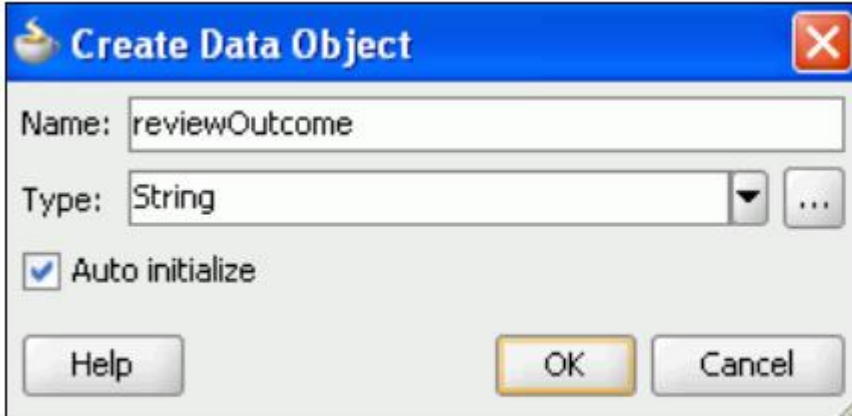
+ Details

- Attributes

- + String review
- + String reason

-
5. Declare a process data object of type **ReviewObject** in the same manner that you did in the **Creating the Business Object** section above. Follow the instructions in Step 4, substituting **review** as the data object name.





The image shows a dialog box titled "Create Data Object" with a blue header bar. The dialog contains the following elements:

- Name:** A text input field containing the text "reviewOutcome".
- Type:** A dropdown menu currently showing "String", with a small arrow pointing down and a "..." button to its right.
- Auto initialize:** A checked checkbox.
- Buttons:** Three buttons at the bottom: "Help", "OK" (highlighted with a yellow border), and "Cancel".

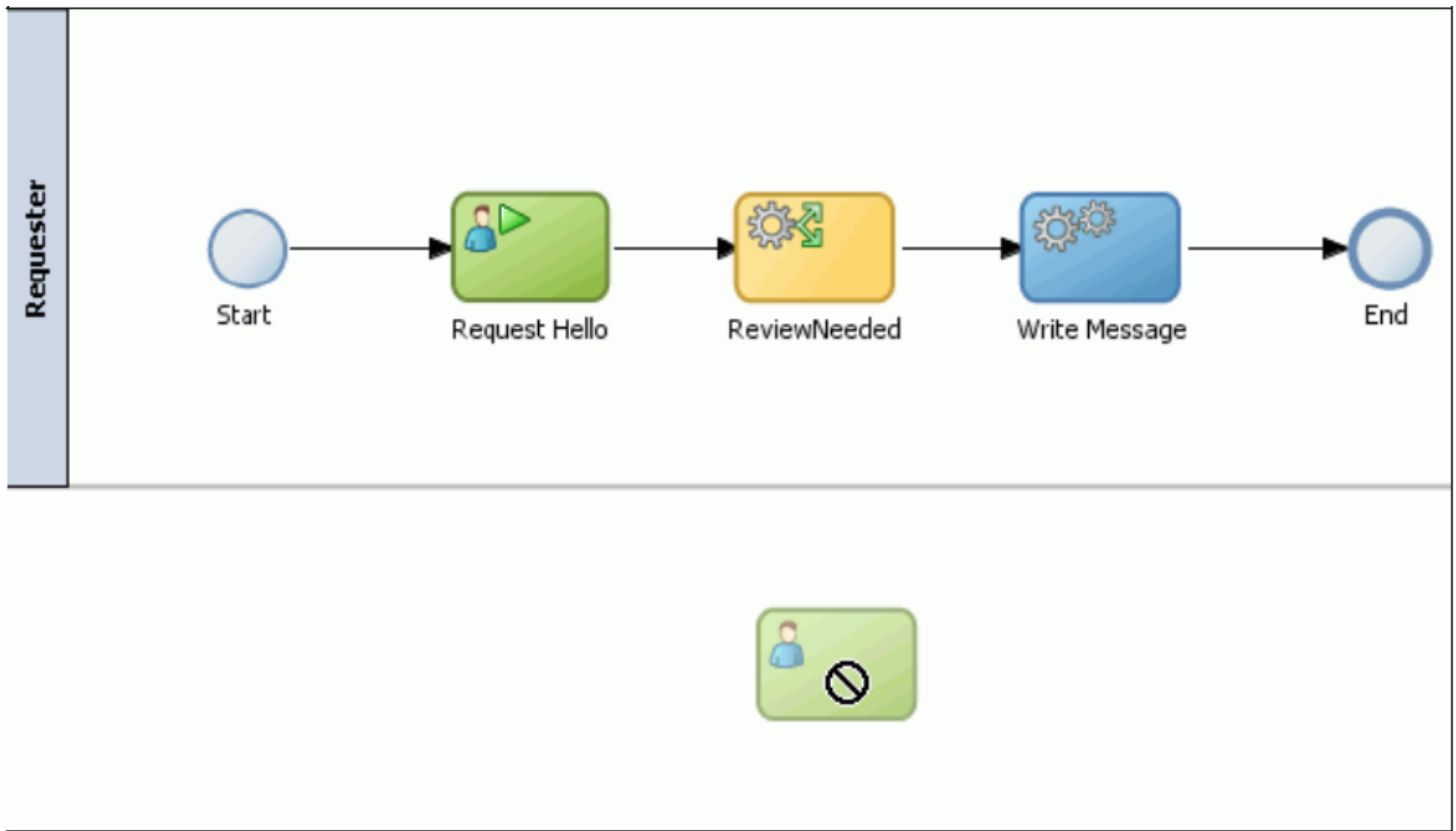
Create Data Object

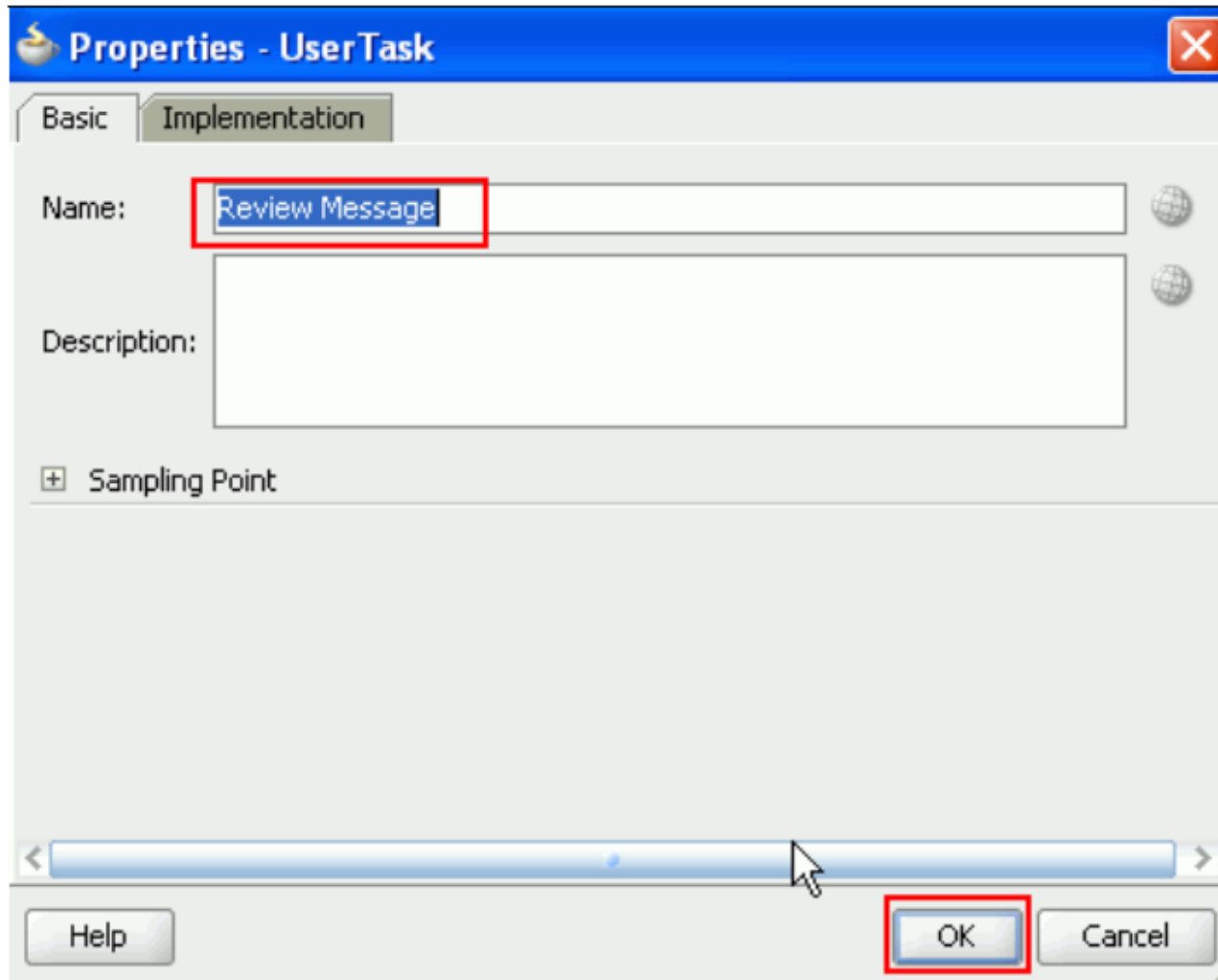
Name:

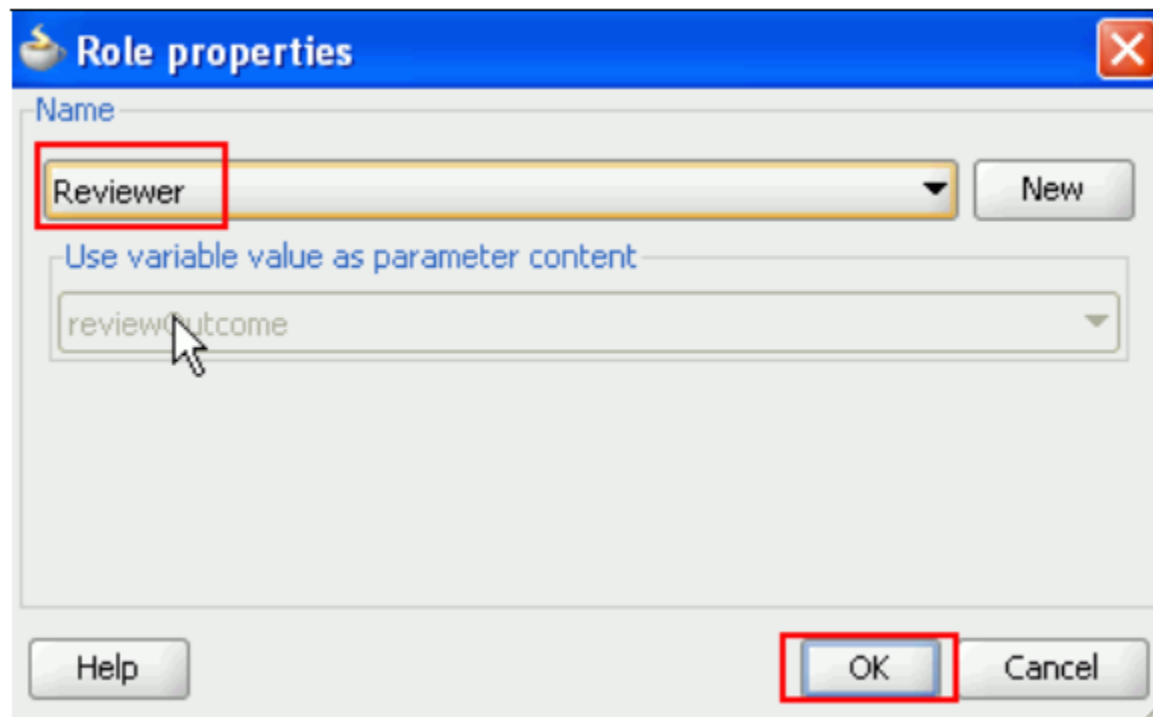
Type: ▼ ...

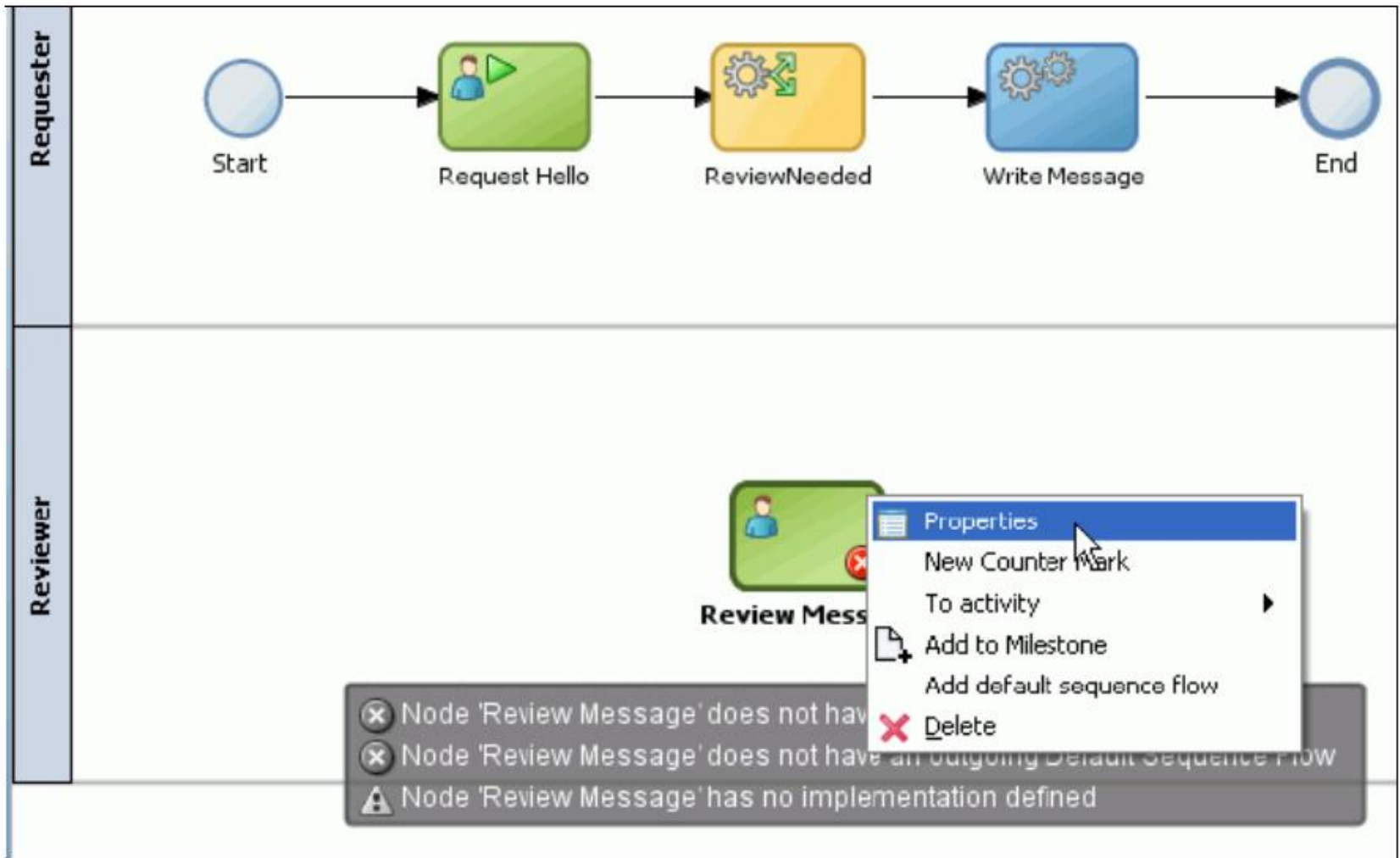
Auto initialize

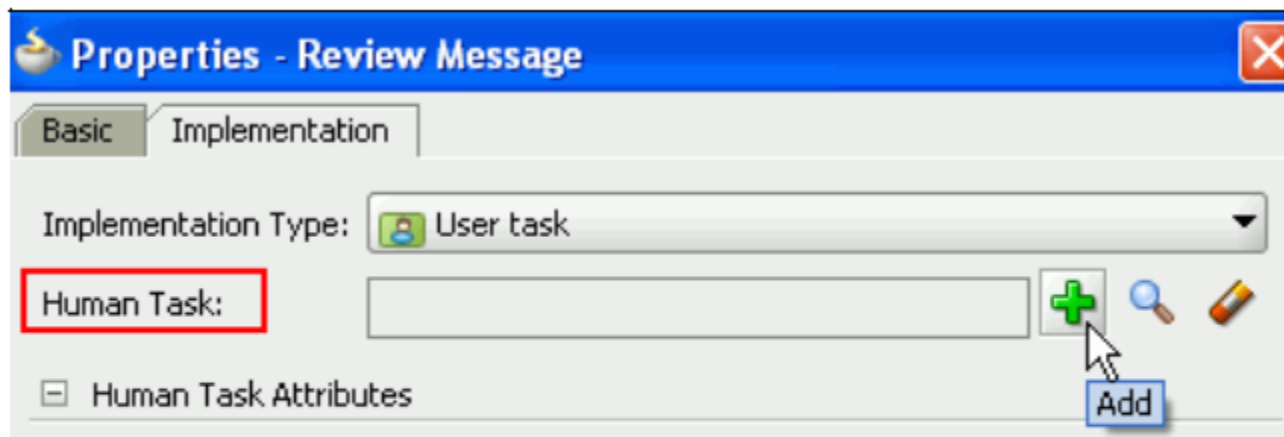












In the Create Human Task window, define the following properties. Accept the other default values.

Name: **ReviewMessage**

Title: **Review the Message**

Create Human Task



General

Name: Priority: 3 (normal)



Pattern:

Title:

Outcomes:

Parameters:  

Parameter	Name	Type	Editable
-----------	------	------	----------

Outcome target:  

Create Human Task

General

Name: ReviewMessage Priority: 3 (normal)

Pattern: Simple

Title: Review the Message

Outcomes: APPROVE,REJECT

Parameters:

Parameter	Name	Type	Editable
HelloObject	hello	HelloTypes.Hello...	<input checked="" type="checkbox"/>
ReviewObject	review	HelloTypes.Revi...	<input type="checkbox"/>

Outcome target: reviewOutcome

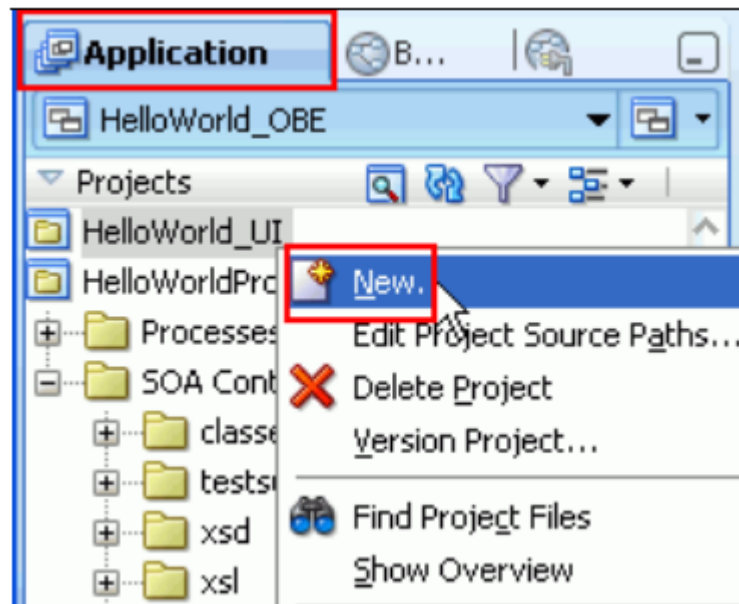
Buttons: Help, OK, Cancel

Data Object

Drag Data Objects to Parameters tab Target field.

- HelloWorldProcess
 - hello
 - review
 - abc reviewOutcome
- HelloWorldProject

Buttons: Help, Close



All Technologies

Current Project Technologies

 Search All Technologies

Categories:

- General
 - BPM Tier
- Business Tier
- Client Tier
- Database Tier
- SOA Tier
 - Service Components
 - Transformations
- Web Tier
 - Applet
 - Facelets
 - HTML
 - JSF
 - JSP
 - Servlets
 - Struts
- All Items

Items:

Show All Descriptions

 ADF Task Flow

 **ADF Task Flow Based on Human Task**

Creates data controls and an ADF task flow based on an existing SOA human task.

First you will be asked to select a human task definition from the SOA Resource Chooser. This will generate a set of data controls, and then launch the ADF task flow creation wizard.

To enable this option, you must select a project or a file within a project in the Application Navigator.

 ADF Task Flow Template

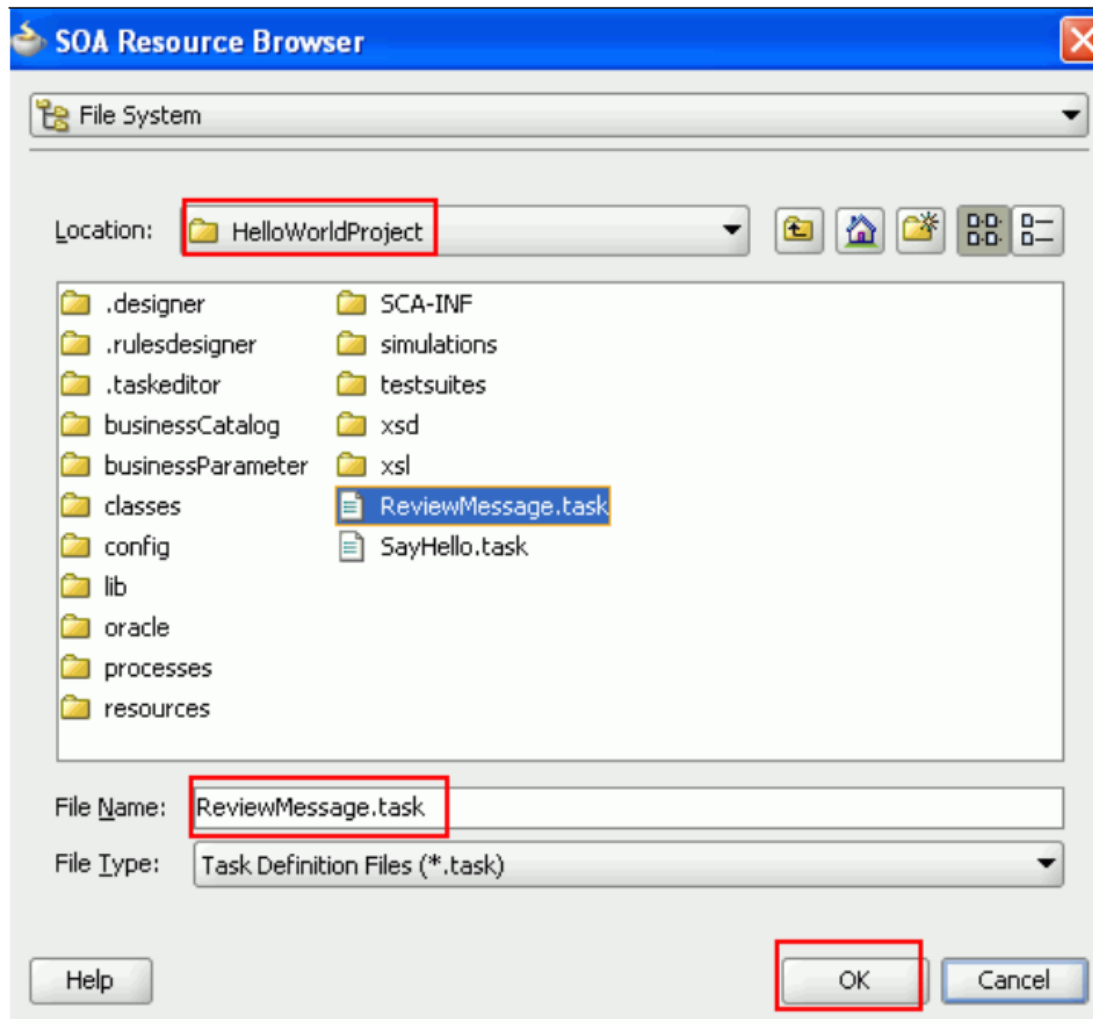
 JSF Declarative Component

 JSF Page

 JSF Page Flow and Configuration (faces-config.xml)

 JSF Page Fragment

 JSF Page Template



Create Task Flow

Create a task flow source file whose contents define either a bounded task flow or part of the web application's unbounded task flow.

A bounded task flow can refer specifically to JSP pages or page fragments, but not both. You can also designate the bounded task flow to be a train at this time.

File Name:

ReviewMessage_TaskFlow.xml

Directory:

C:\JDeveloper\mywork\HelloWorld_OBE\HelloWorld_UI\public_html\WEB-INF

Browse...

Create as Bounded Task Flow

Task Flow ID: ReviewMessage_TaskFlow

Create with Page Fragments

Create Train

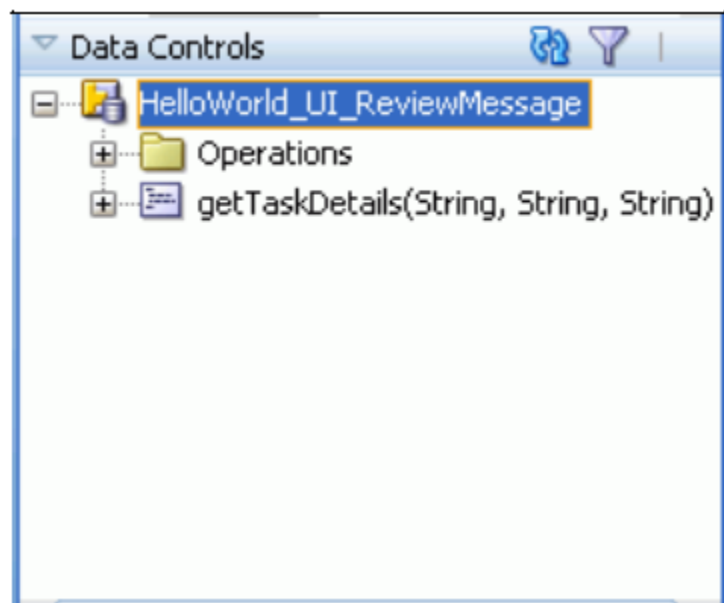
Base on Template:

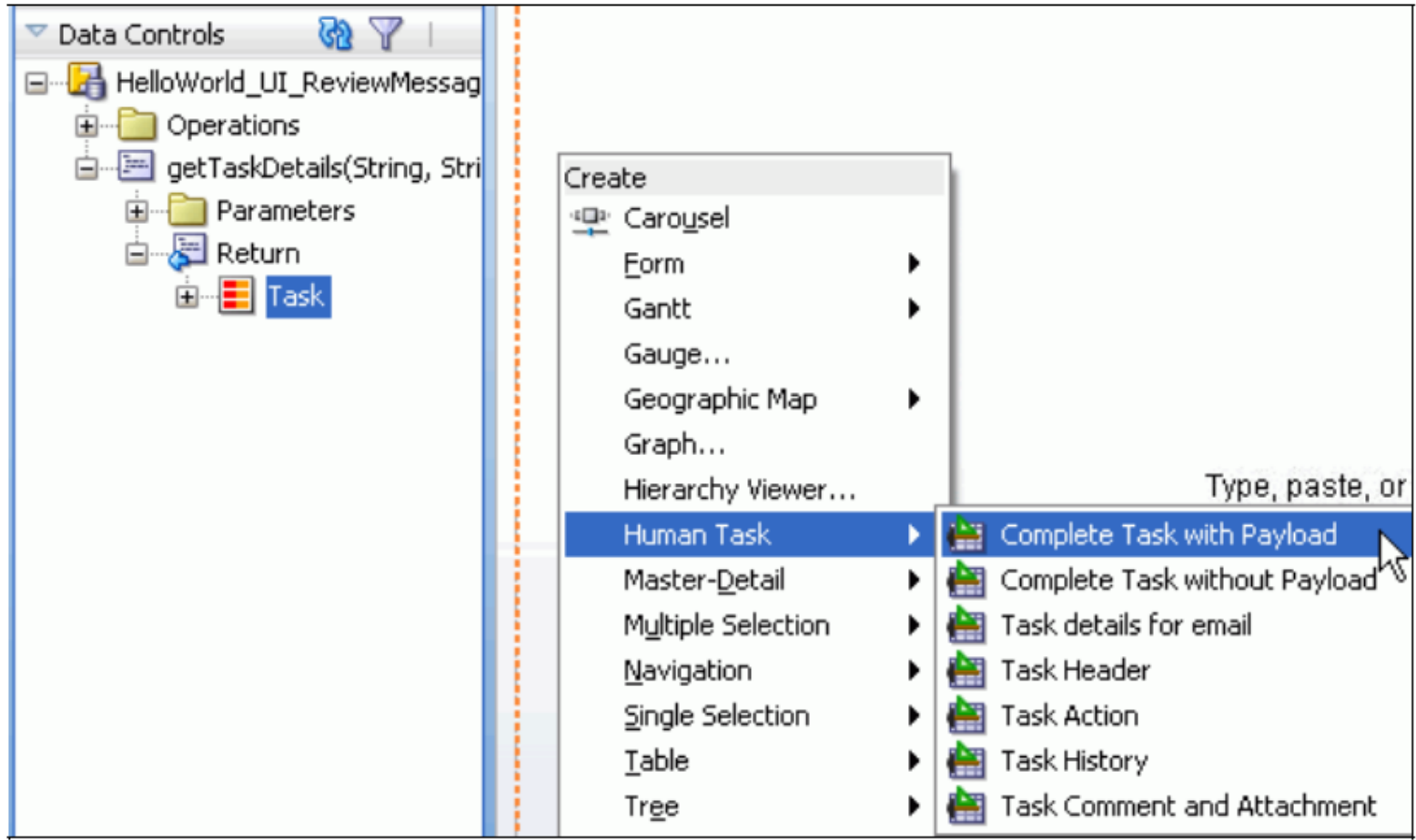
Update the Task Flow when the Template Changes

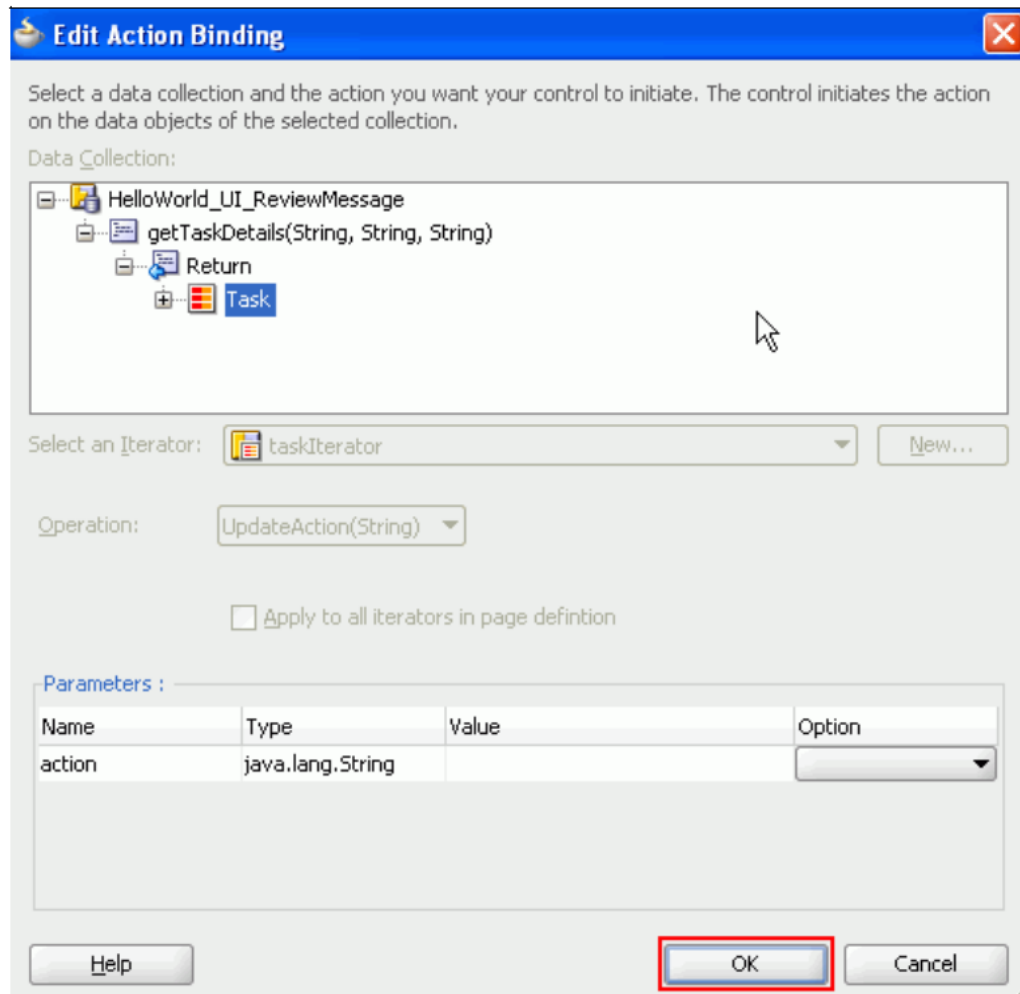
Help

OK

Cancel





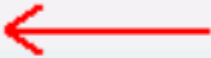


??CONTENTS??

Date	<input type="text" value="#{...date.inputValue}"/>
Greeting	<input type="text" value="#{...greeting.inputValue}"/>
Message	<input type="text" value="#{...message.inputValue}"/>

Review Object

Review	<input type="text" value="#{...review.inputValue}"/>
Reason	<input type="text" value="#{...reason.inputValue}"/>





Laboratorio Oracle BPMN Escalamiento

IN79Ñ-1

EDWIN VARGAS – edwin.vargas@i2b.cl

CARLOS REVECO – creveco@dcc.uchile.cl