



# Osteoartrología de Miembro Inferior

**Klgo. Rodolfo Sanzana**

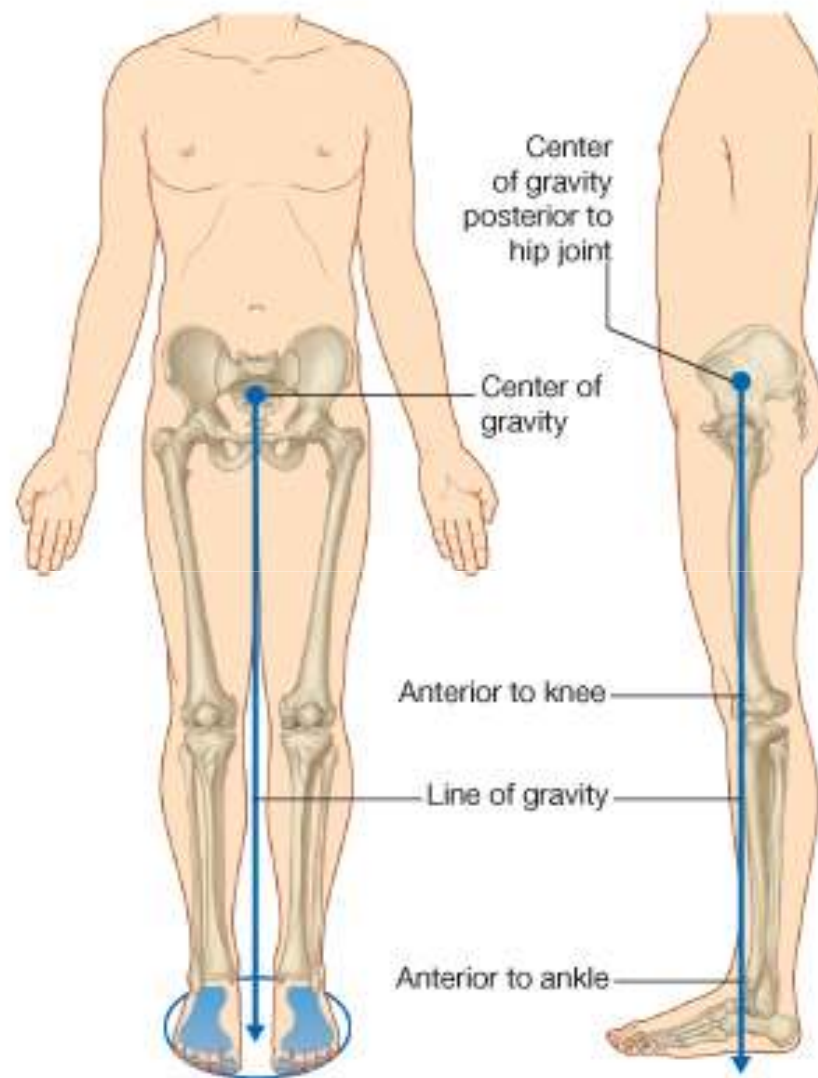
***Programa de Anatomía y Biología del Desarrollo***

***Facultad de Medicina***

***Universidad de Chile***



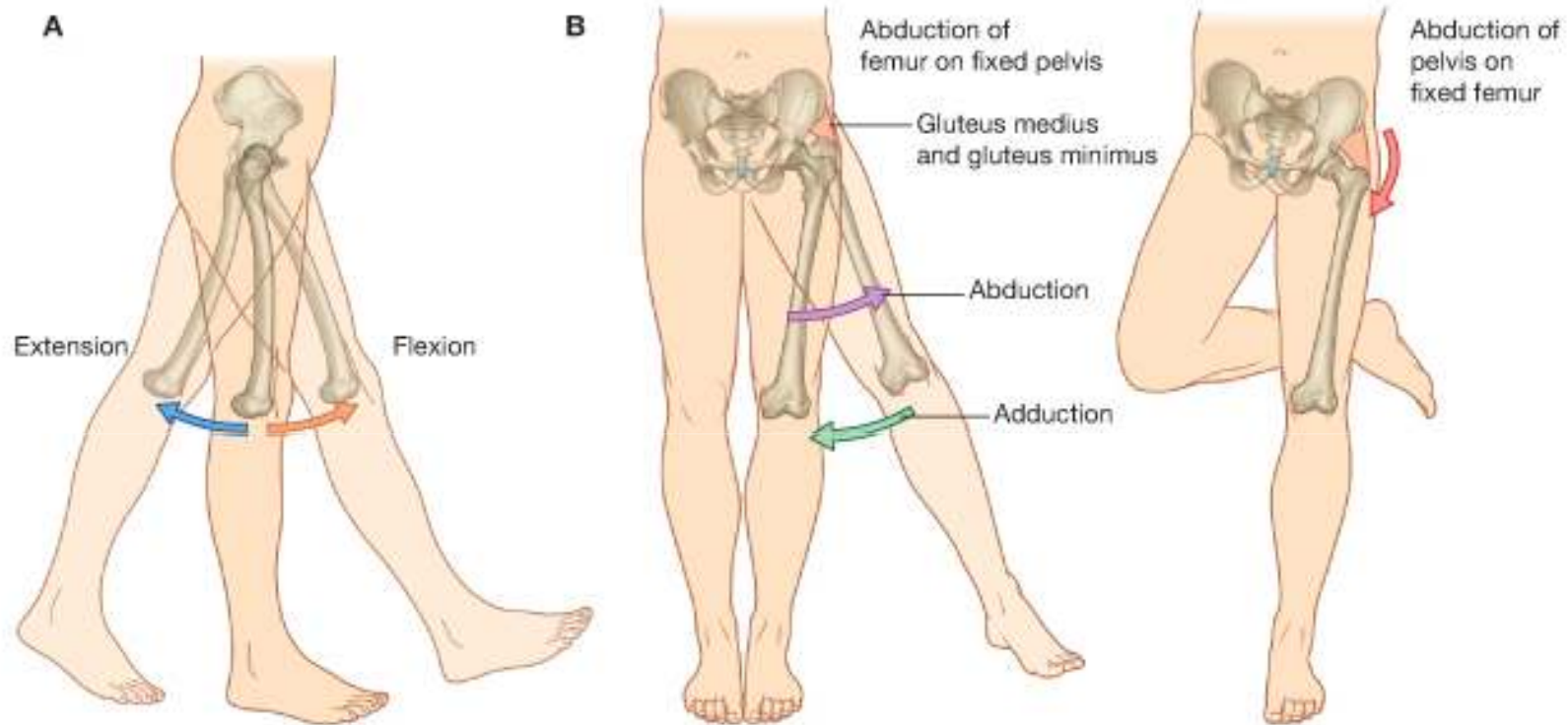
# Generalidades



© Elsevier. Drake et al: Gray's Anatomy for Students - [www.studentconsult.com](http://www.studentconsult.com)

[Add to My Slides](#) [Go to My Slides](#)

Figure 6.4 Center and line of gravity.

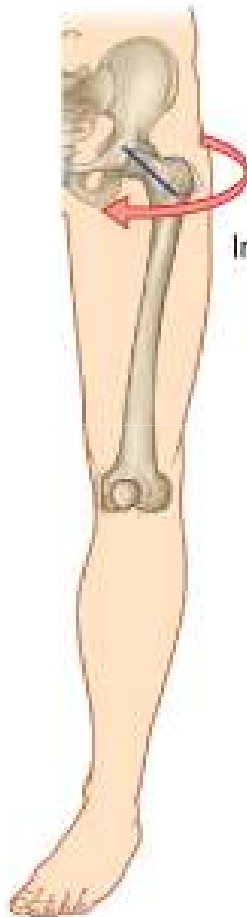
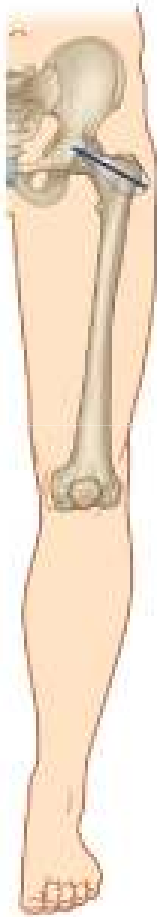


© Elsevier. Drake et al: Gray's Anatomy for Students - [www.studentconsult.com](http://www.studentconsult.com)

[Add to My Slides](#) [Go to My Slides](#)

Figure 6.5 Movements of the hip joint. A. Flexion and extension. B. Abduction and adduction. Movements of the hip joint. C. External and internal rotation.

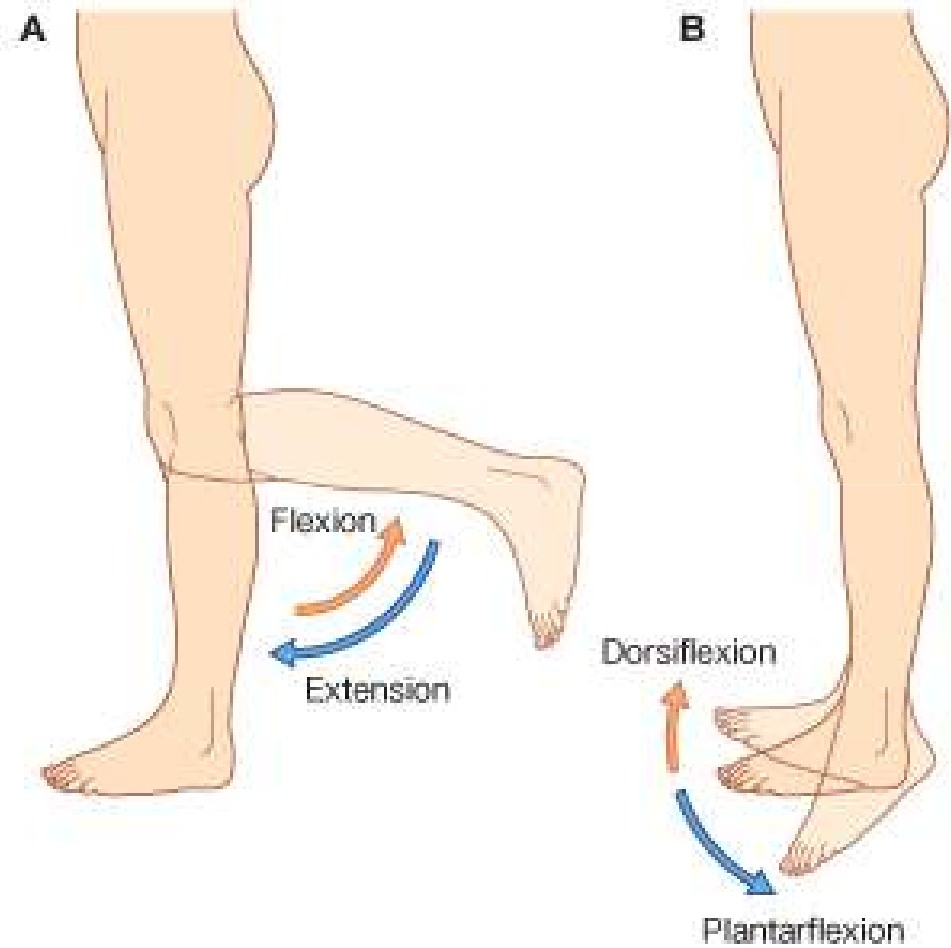
c



Internal rotation



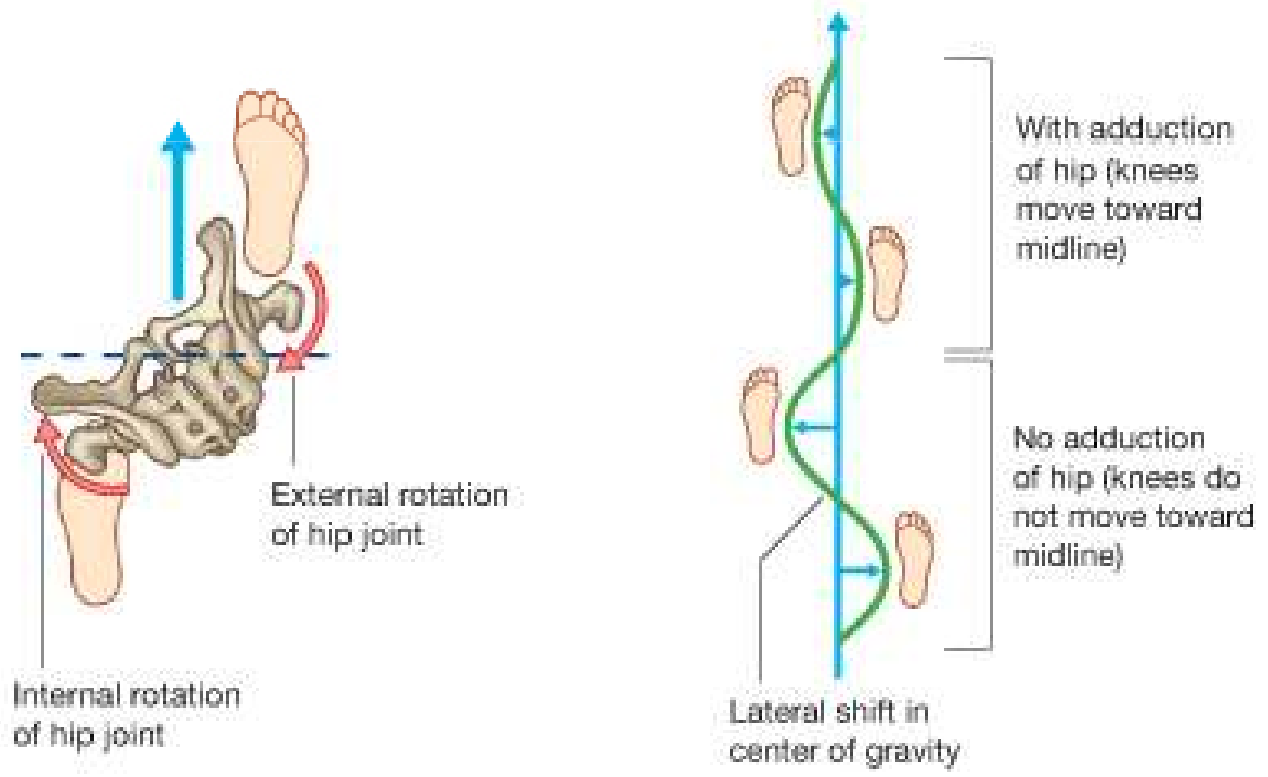
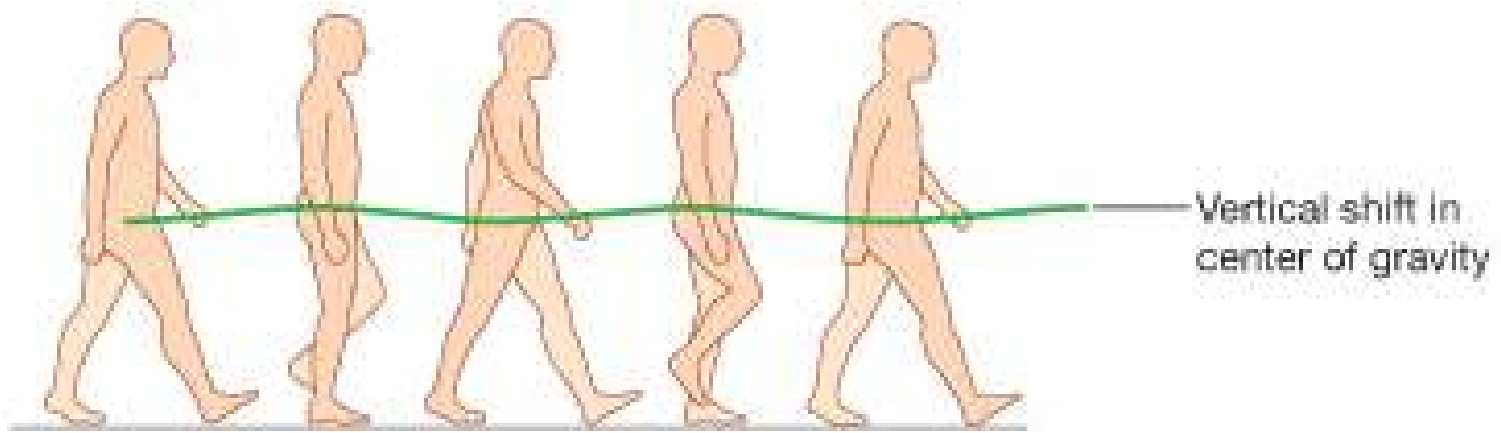
External rotation



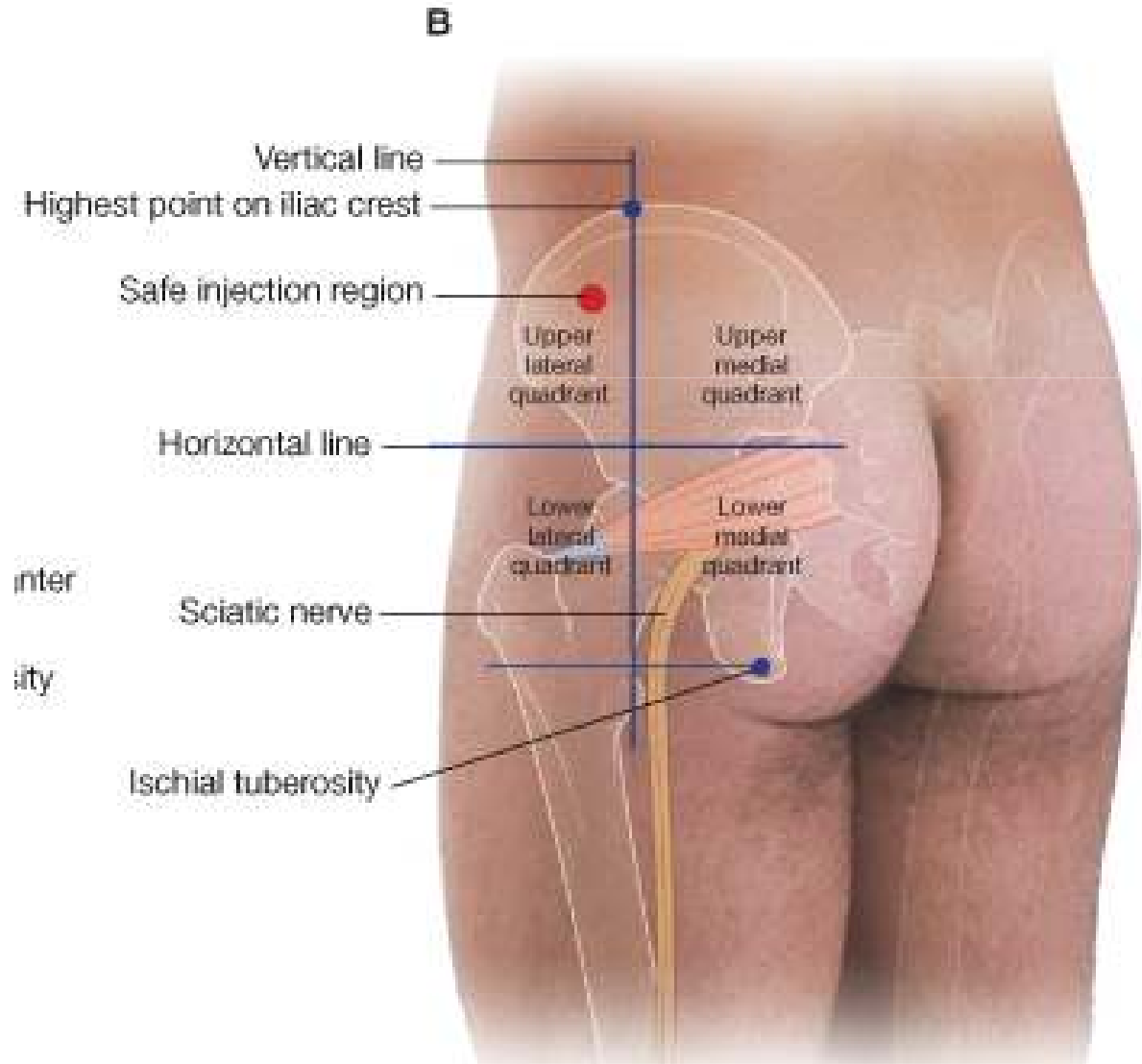
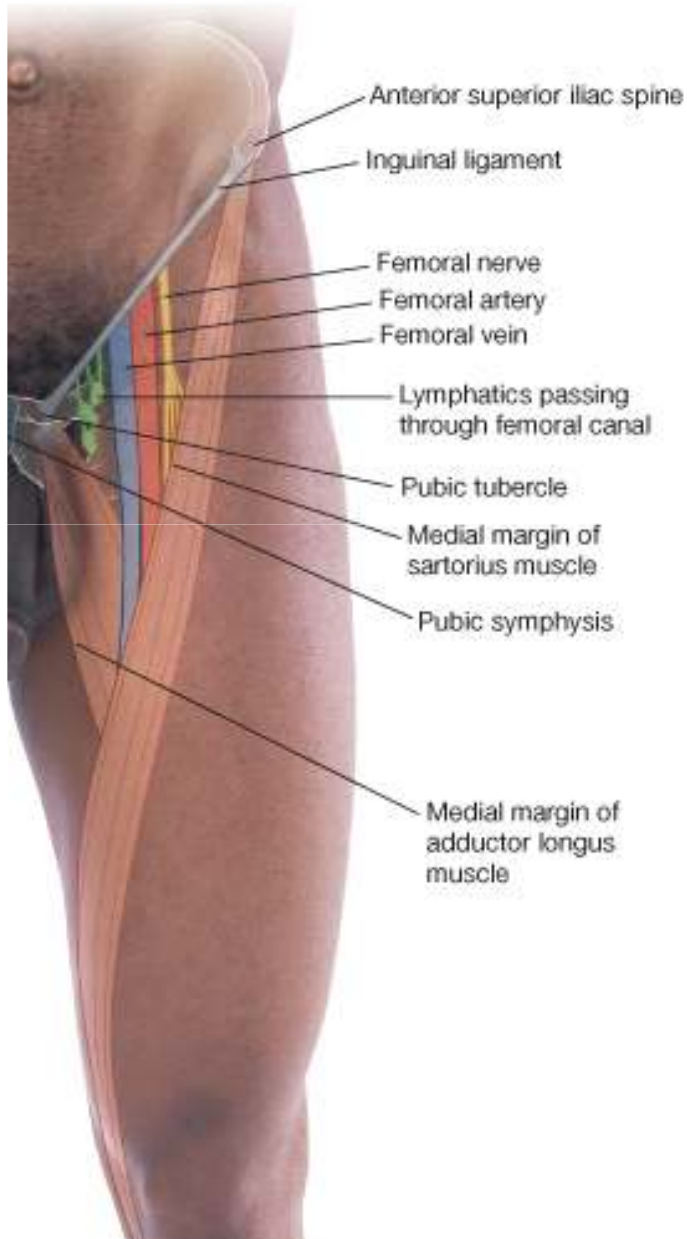
© Elsevier. Drake et al: Gray's Anatomy for Students - [www.studentconsult.com](http://www.studentconsult.com)

[Add to My Slides](#) [Go to My Slides](#)

Figure 6.6 Movements of the knee and ankle. **A.** Knee flexion and extension. **B.** Ankle dorsiflexion and plantarflexion.



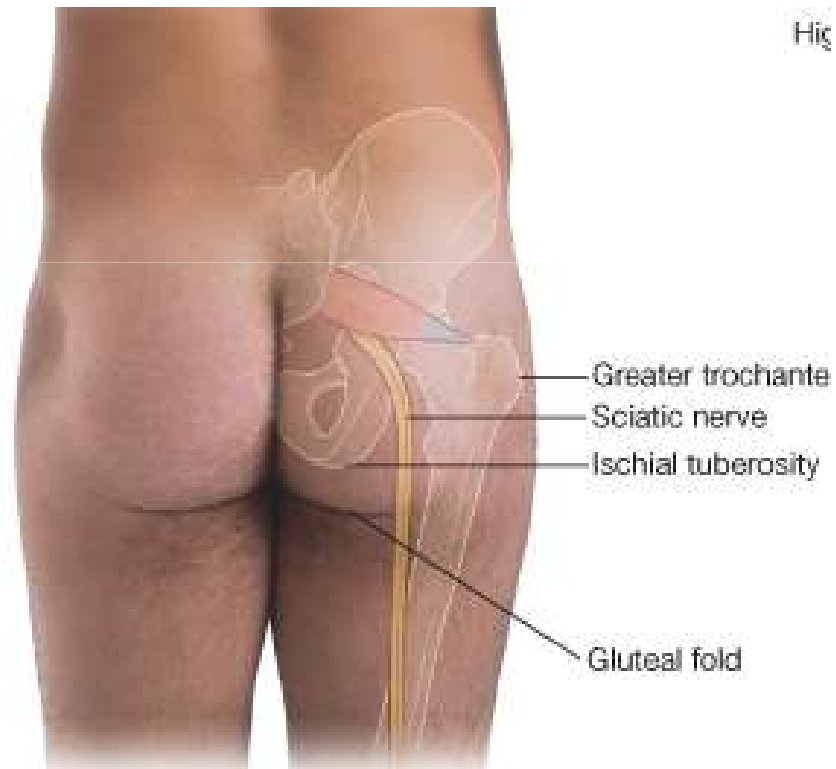
# Región de la Cadera



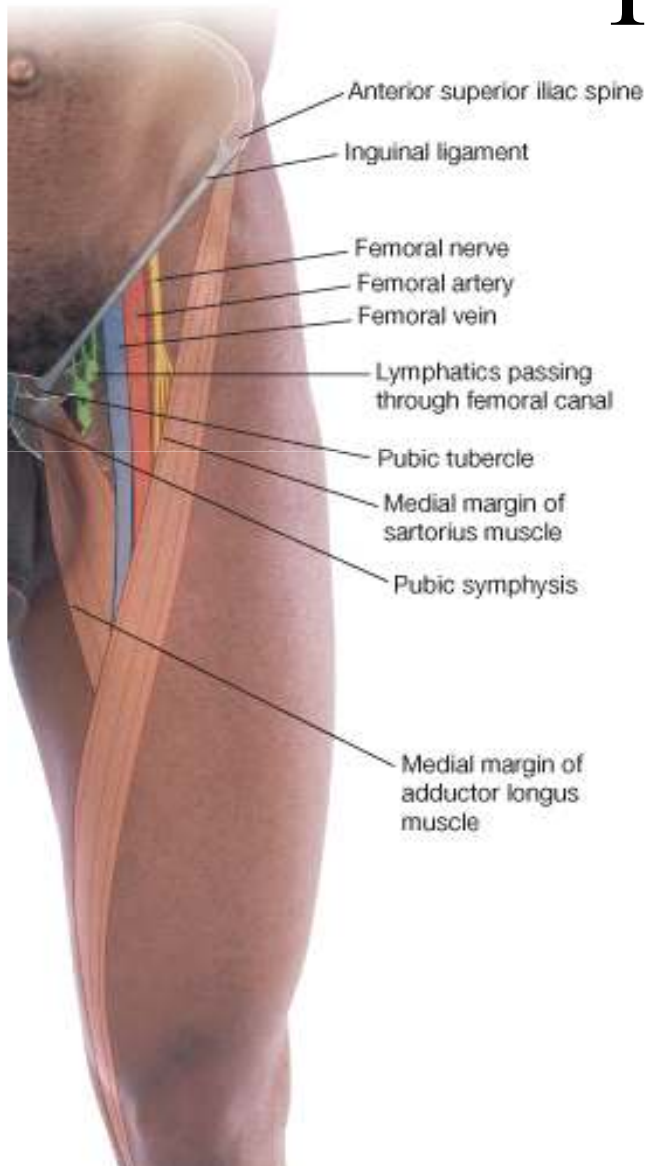




# Región Glútea

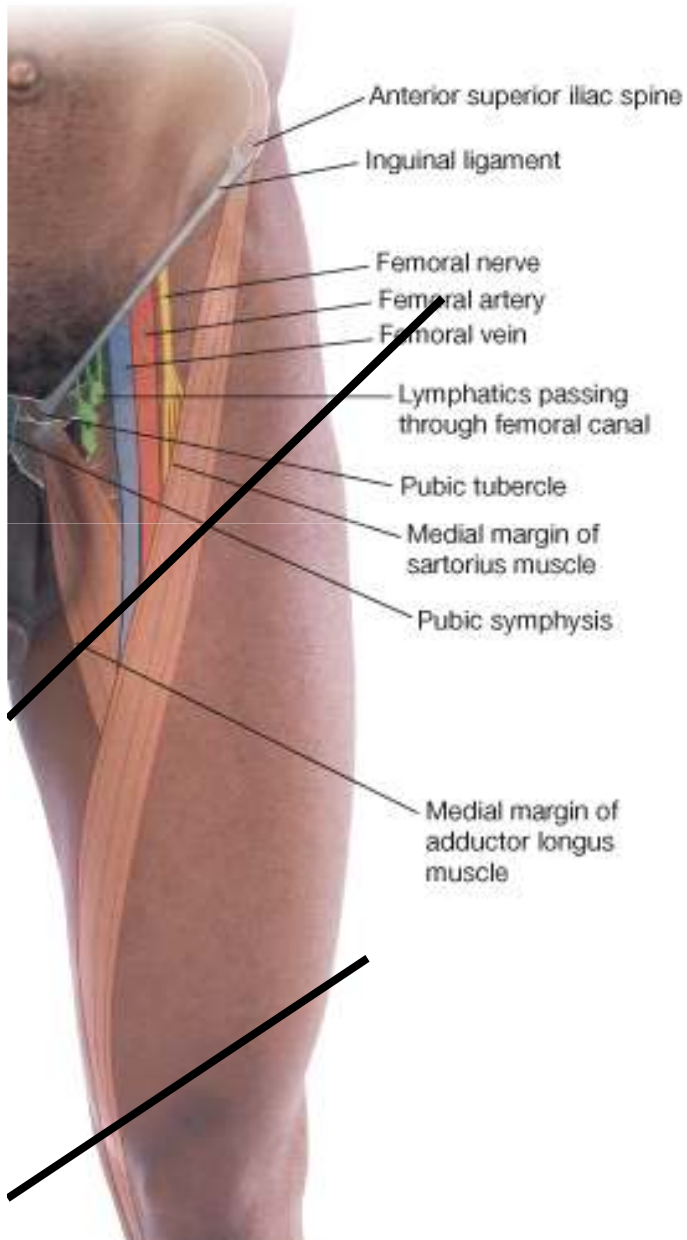


# Región Obturatriz e Inguinofemoral



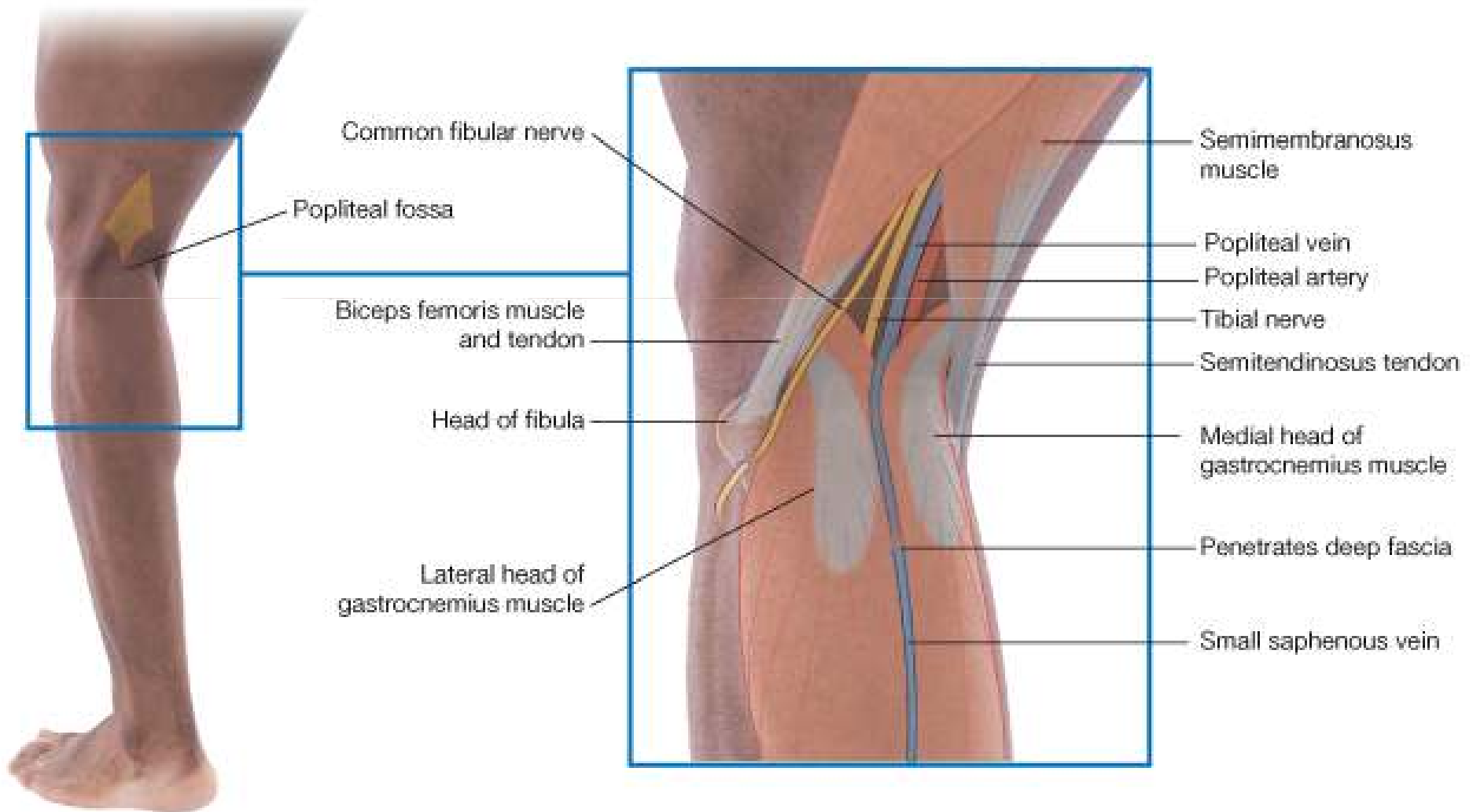


# Región del Muslo





# Región de la Rodilla





# Región De la Pierna (Crural)

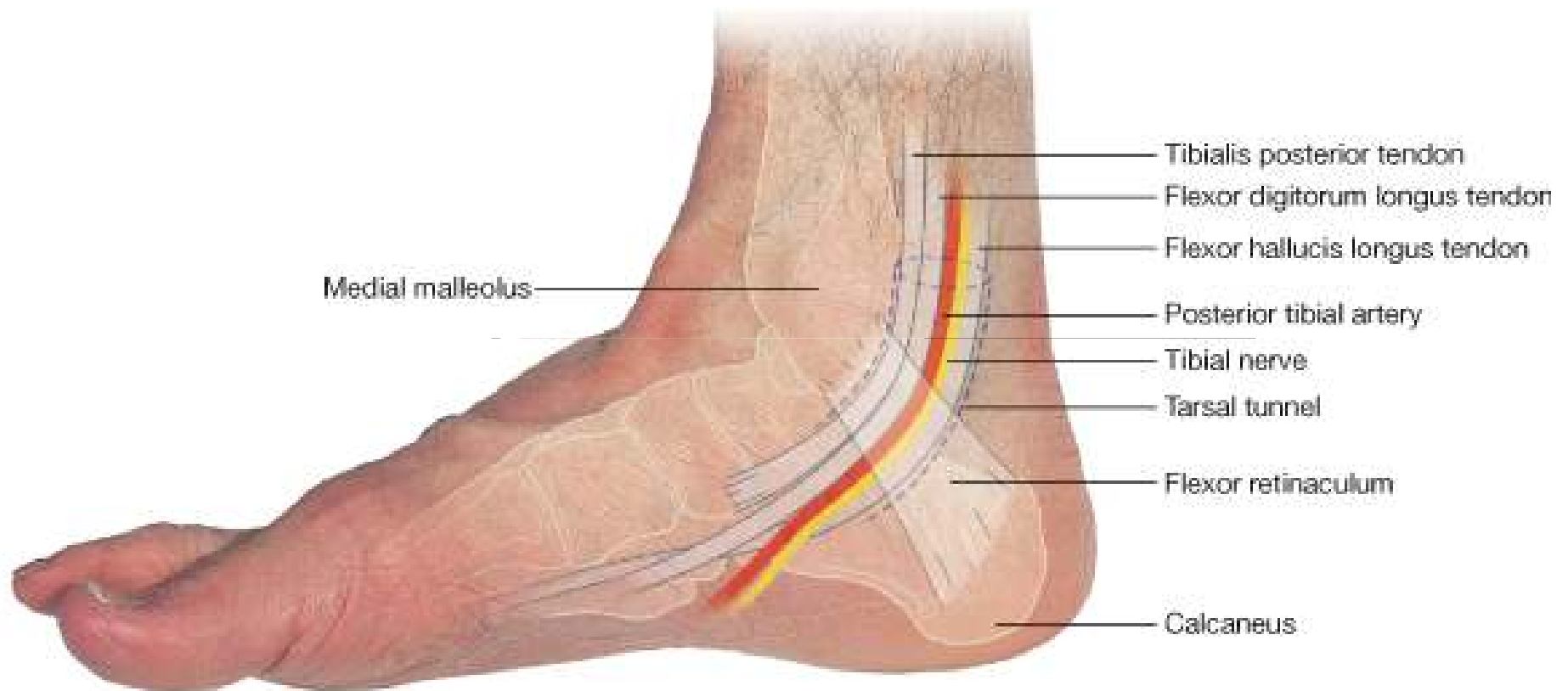


B



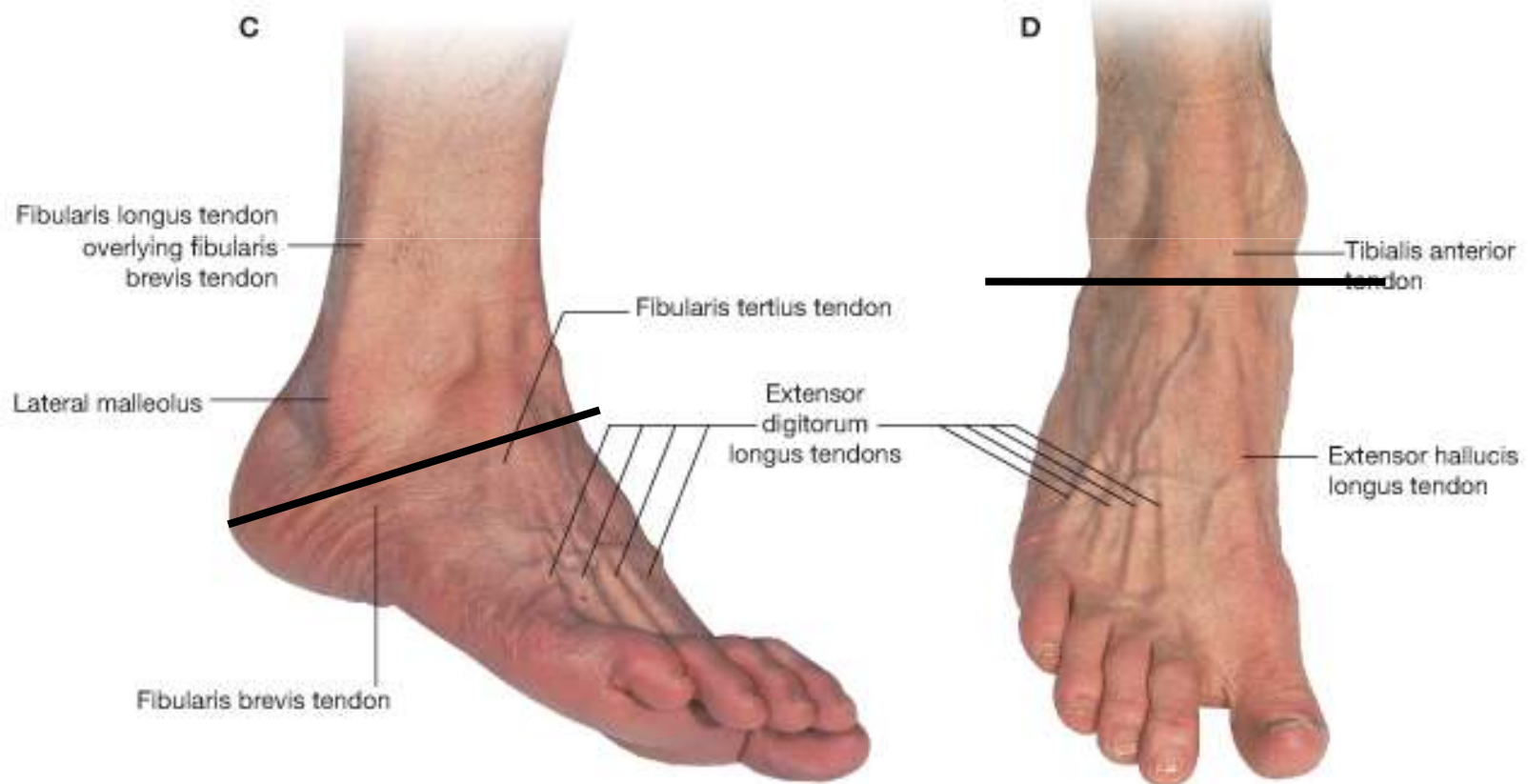


# Región Talocrural





# Región del Pie





# Puntos de Importancia

## Pulse points



© Elsevier. Drake et al: Gray's Anatomy for Students - [www.studentconsult.com](http://www.studentconsult.com)

[Add to My Slides](#) [Go to My Slides](#)

Figure 6.132 Where to feel peripheral arterial pulses in the lower limb.





# Osteología

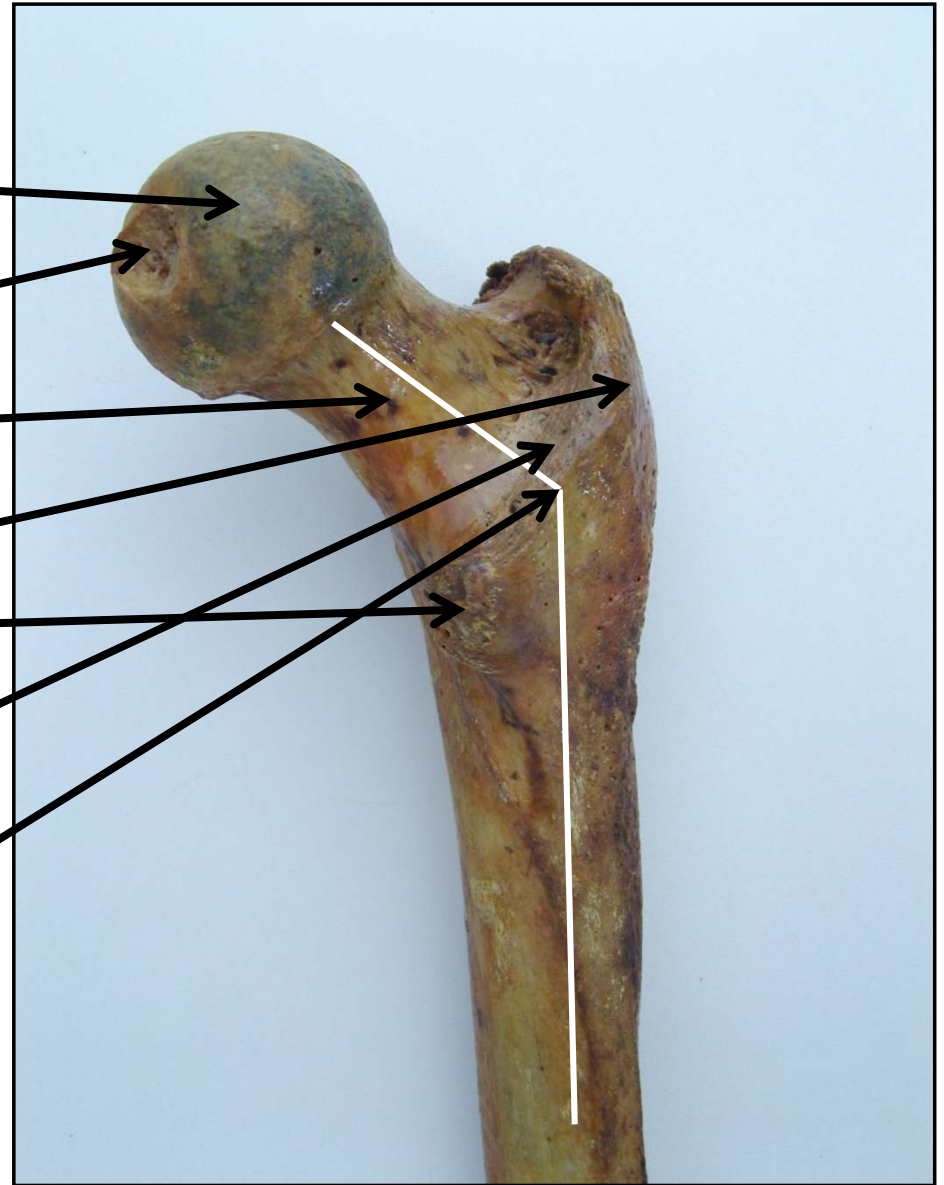


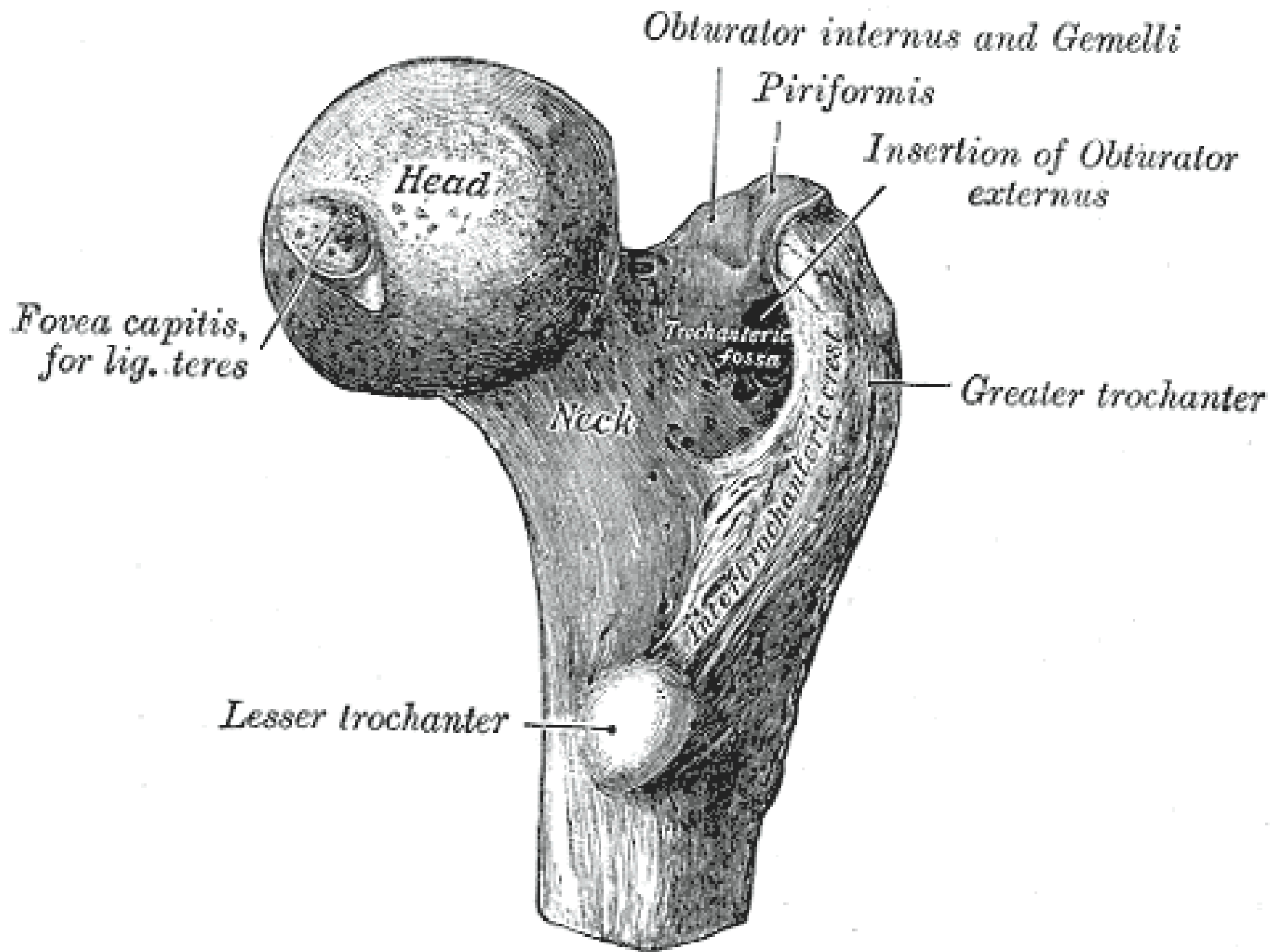


# Fémur

## Epífisis Proximal

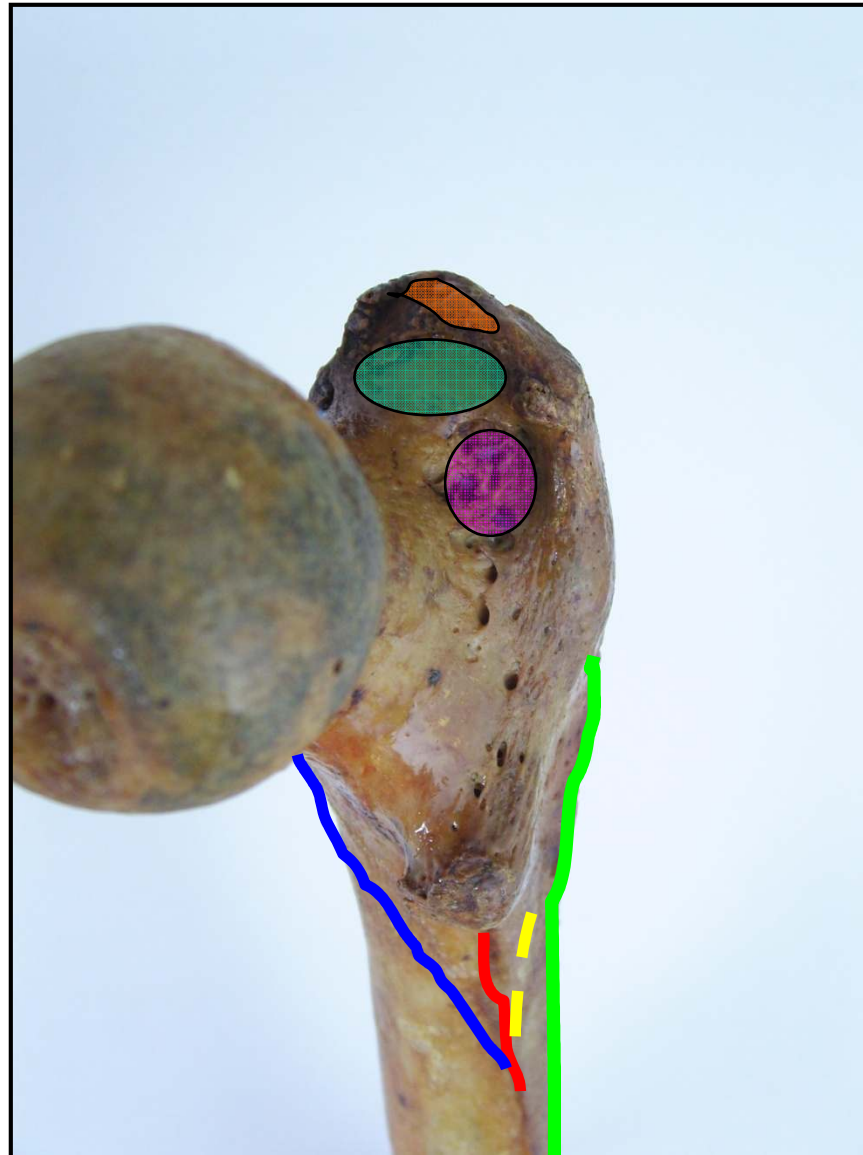
- Cabeza Femoral
  - Fosa para el Lig. De la cabeza del fémur.
- Cuello
- Trocánter mayor y menor
- Línea intertrocantérea
- Ángulo Cervicodiafisiario



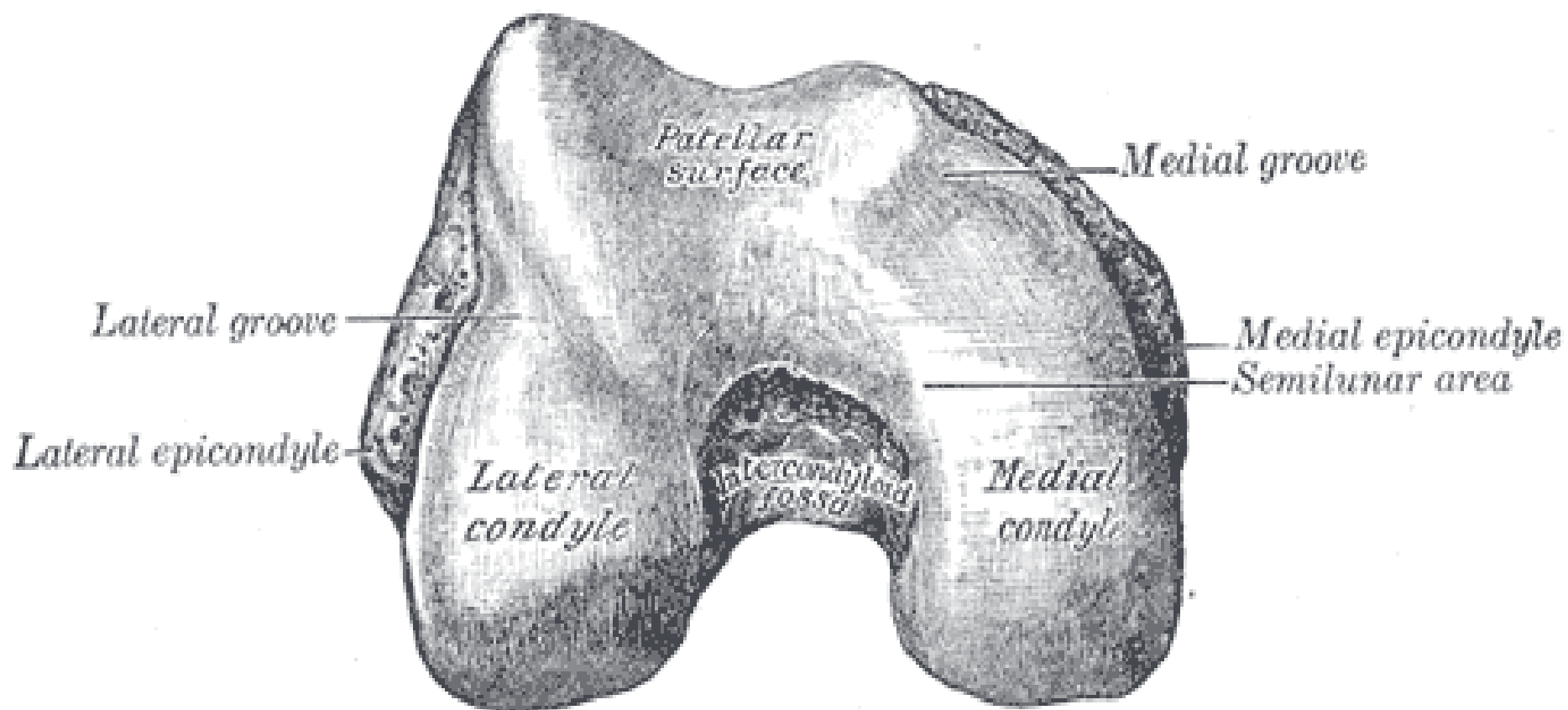


# Fémur

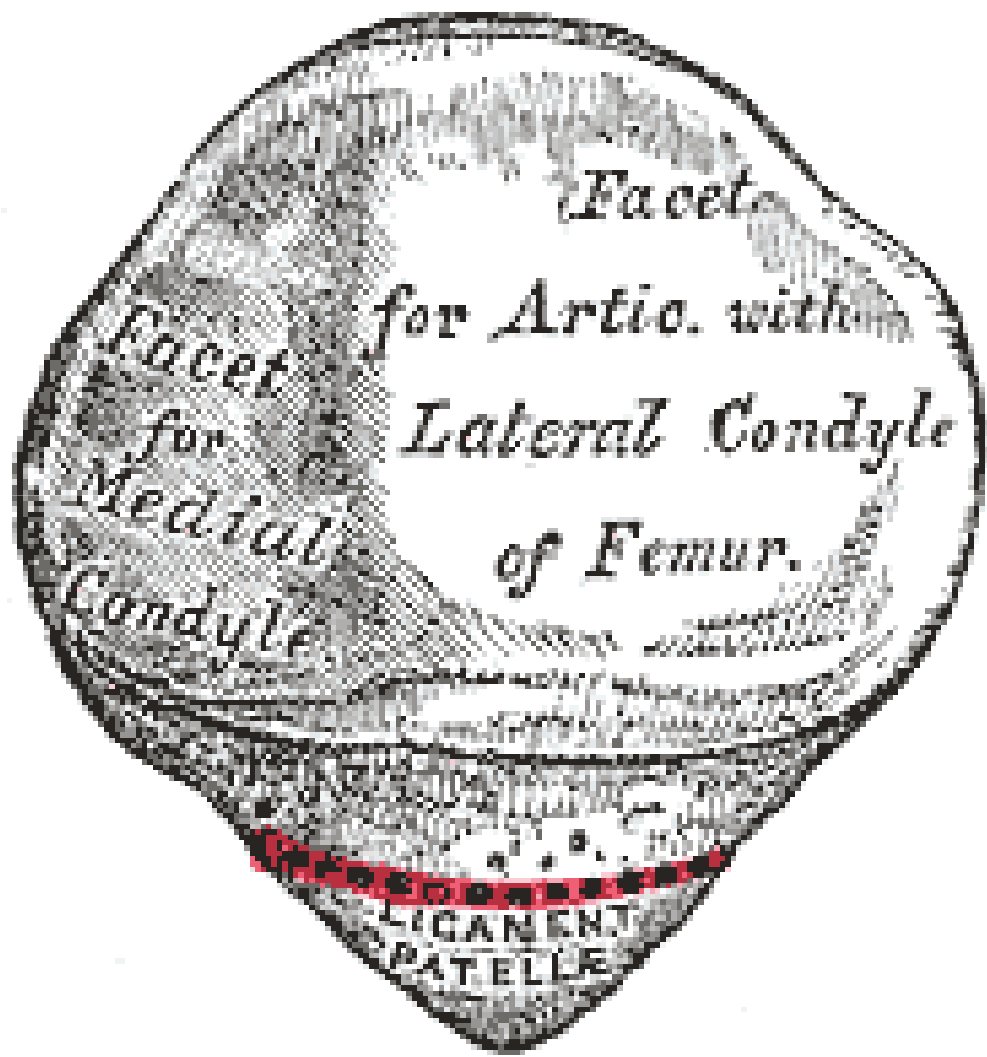
- Línea áspera











*Facet*

*for Artic. with*

*Lateral Condyle*

*of Femur.*

*Facet*

*for*

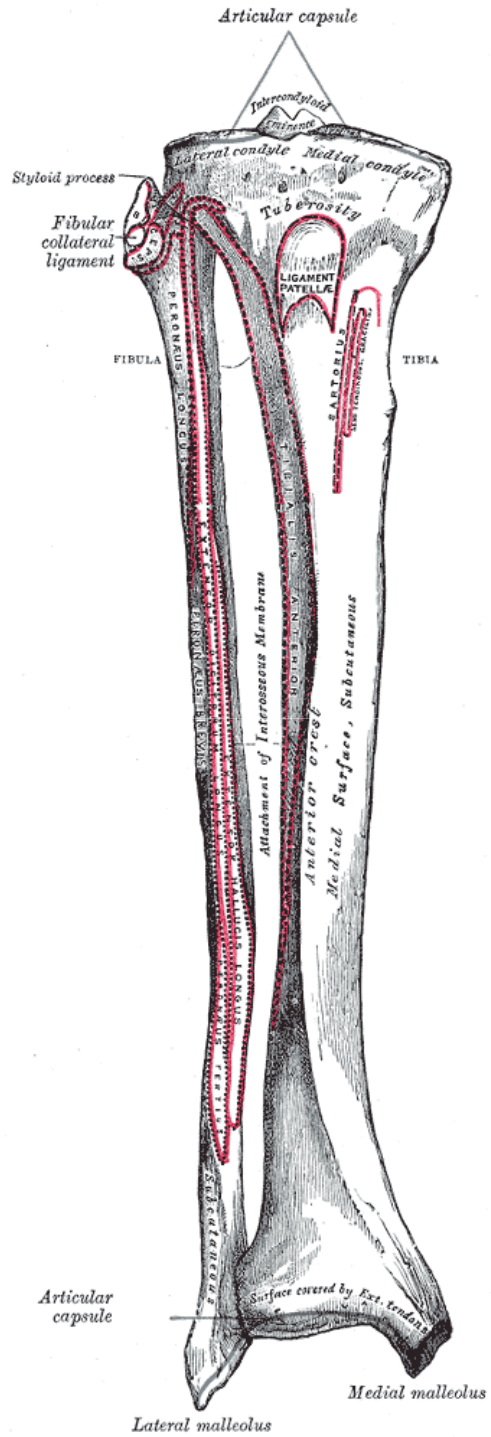
*Artic. with*

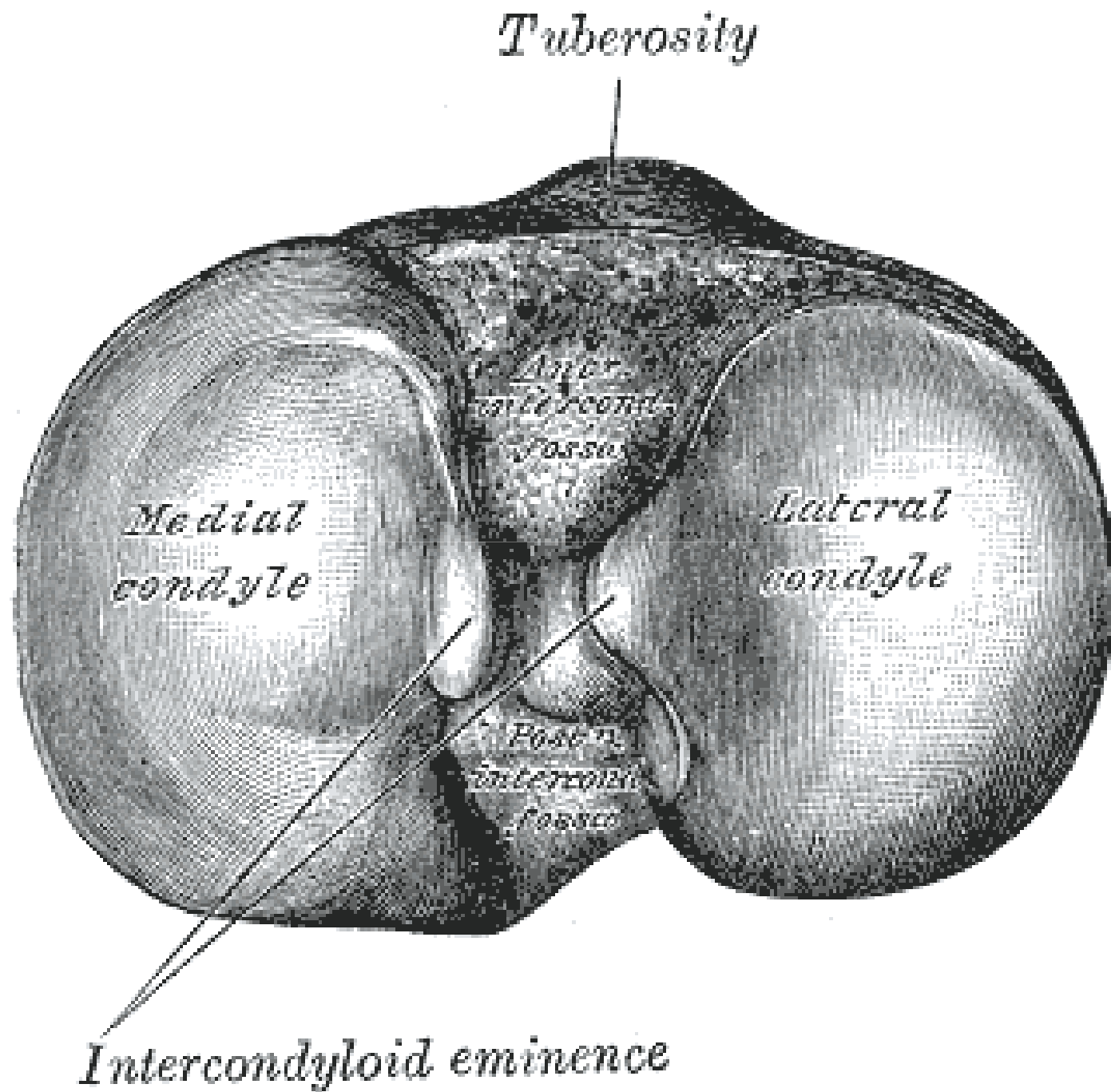
*Medial*

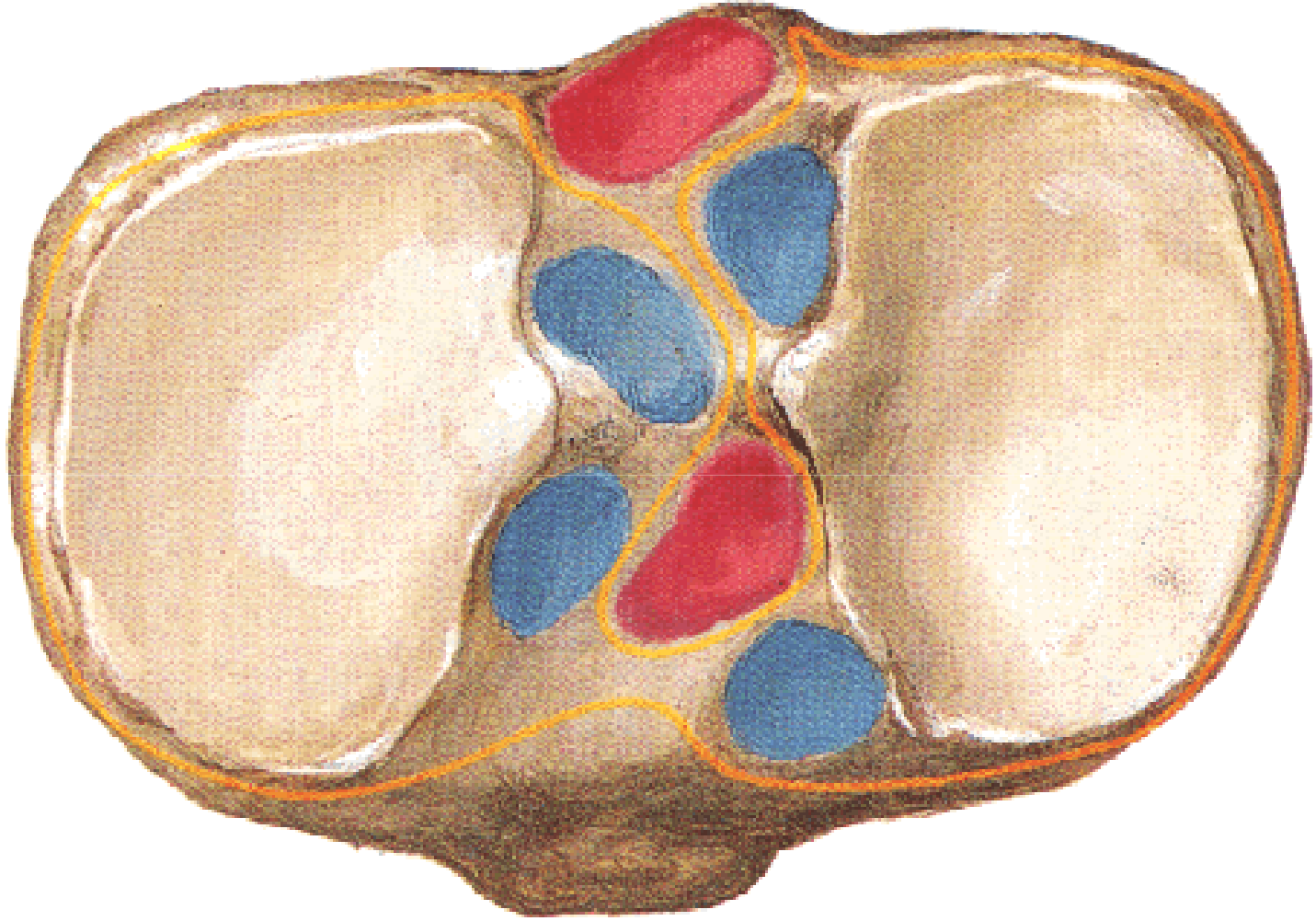
*Condyle*

**LIGAMENT**

**PATELLE**









**Visión anterior**



**Visión posterior**

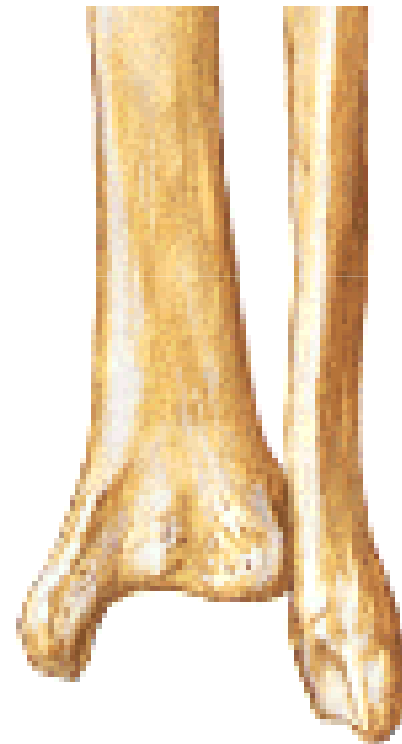


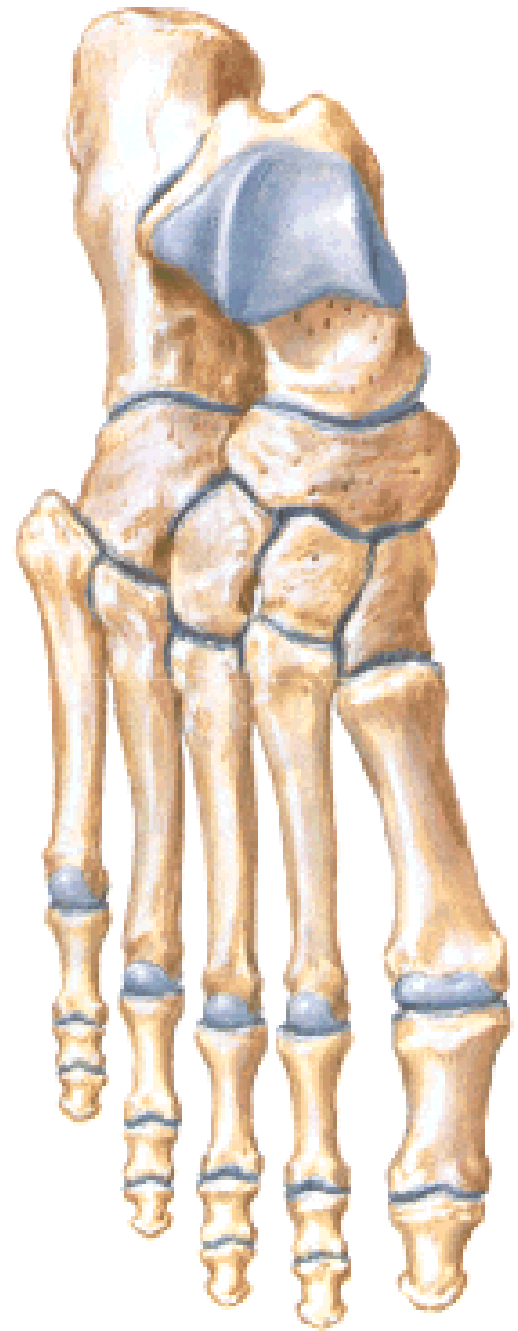
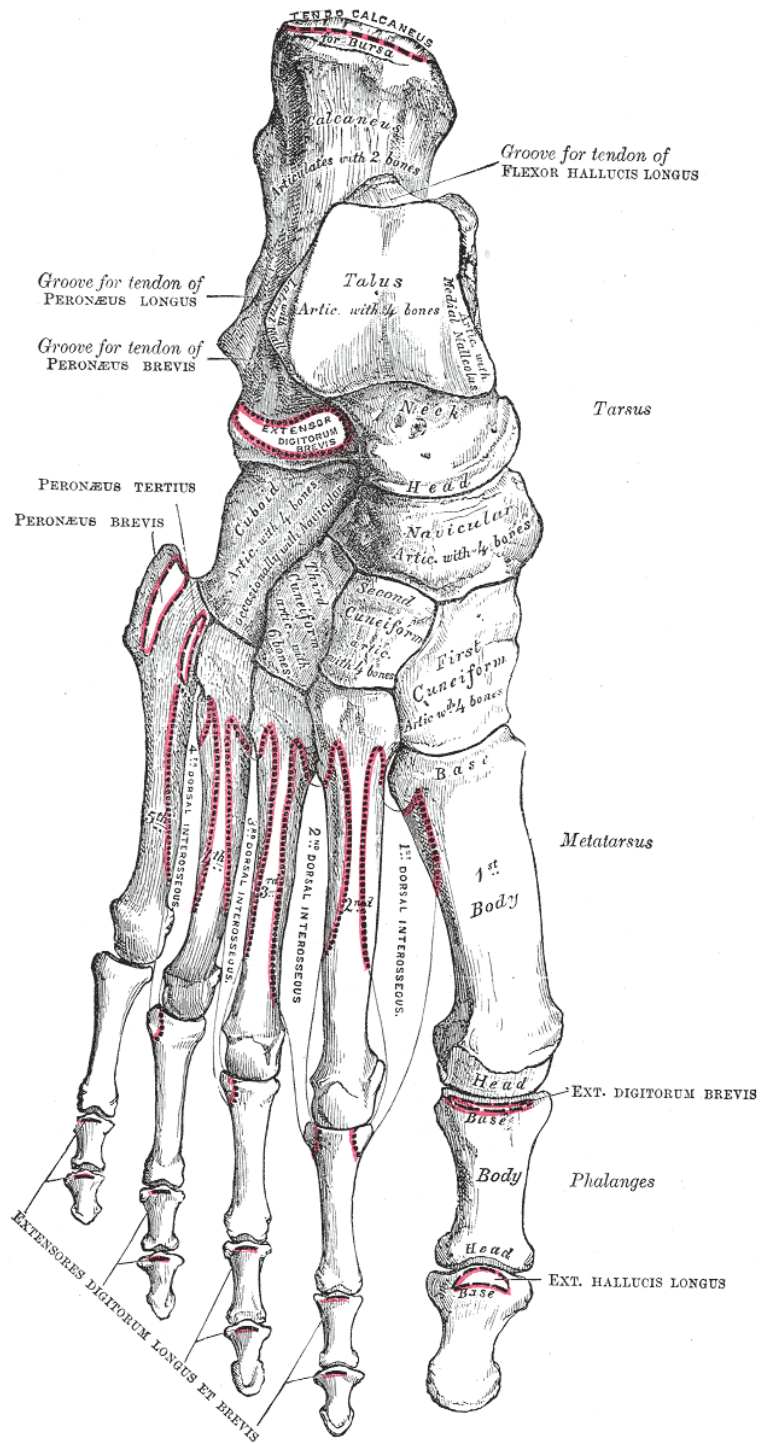


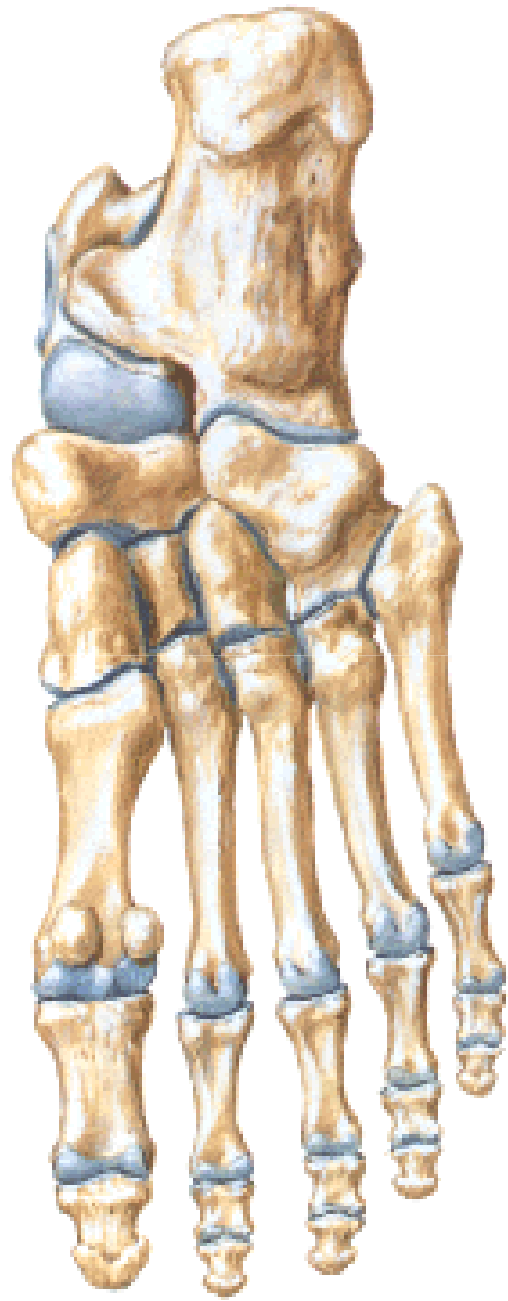
## **Visión anterior**



## **Visión posterior**



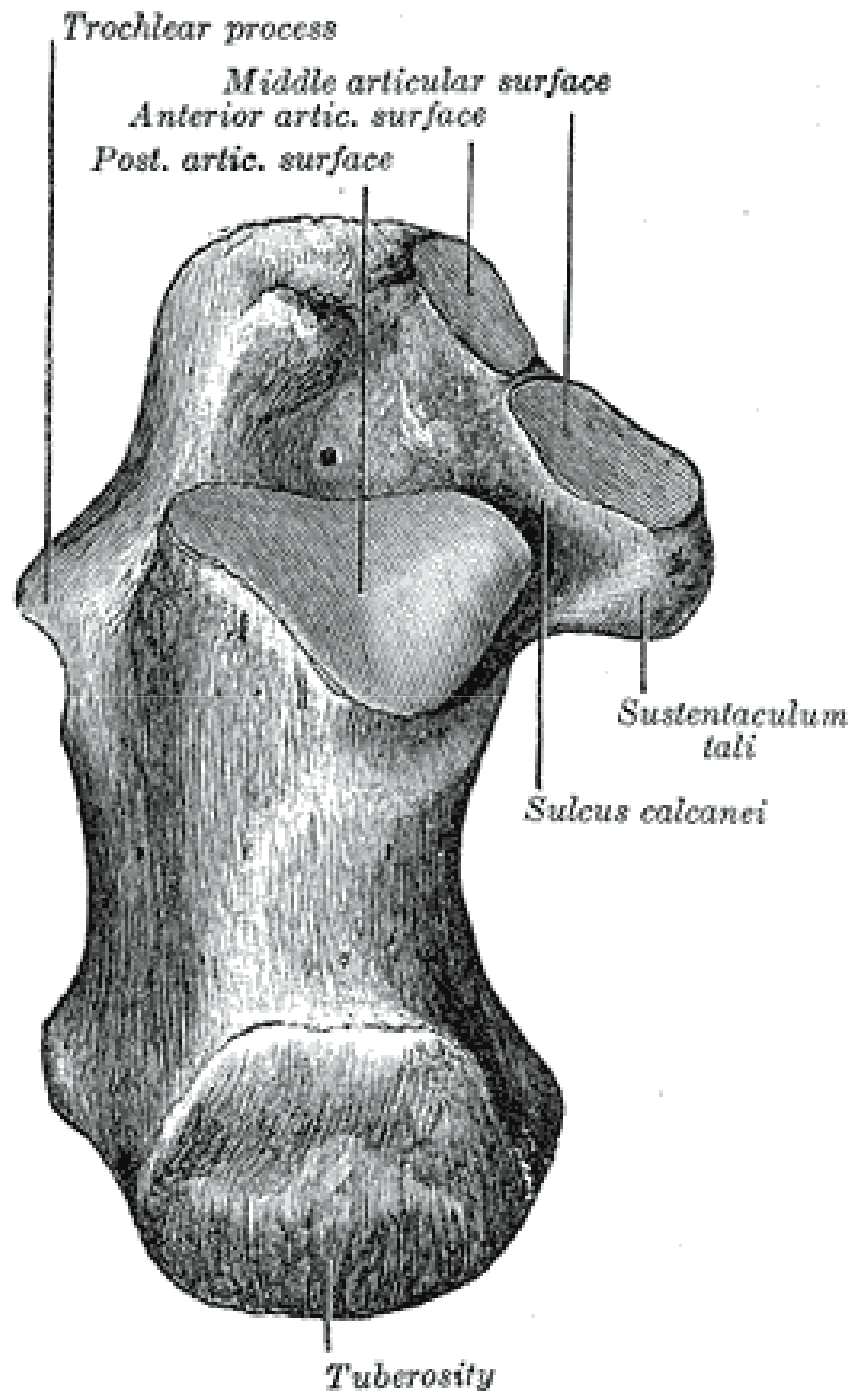


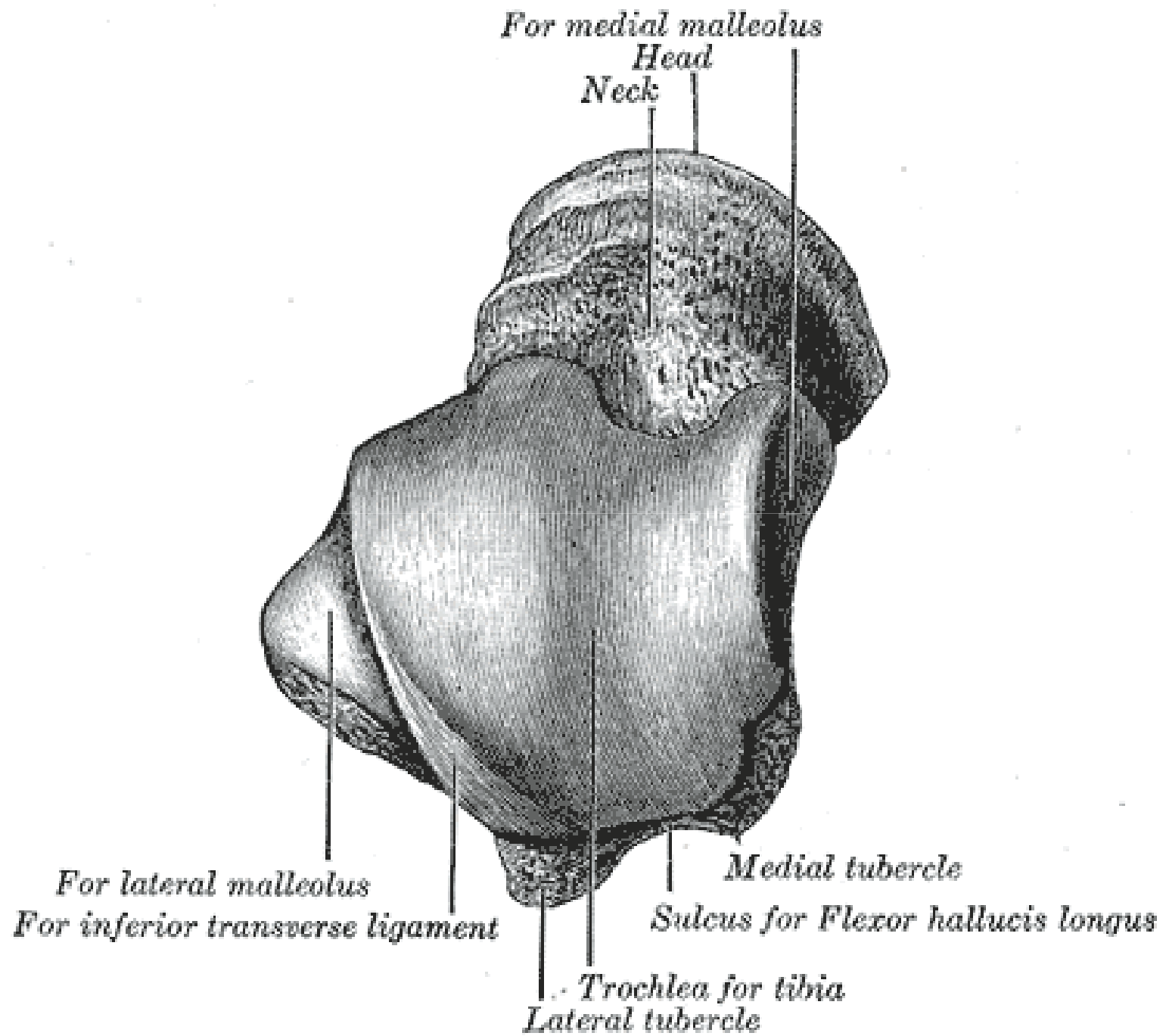








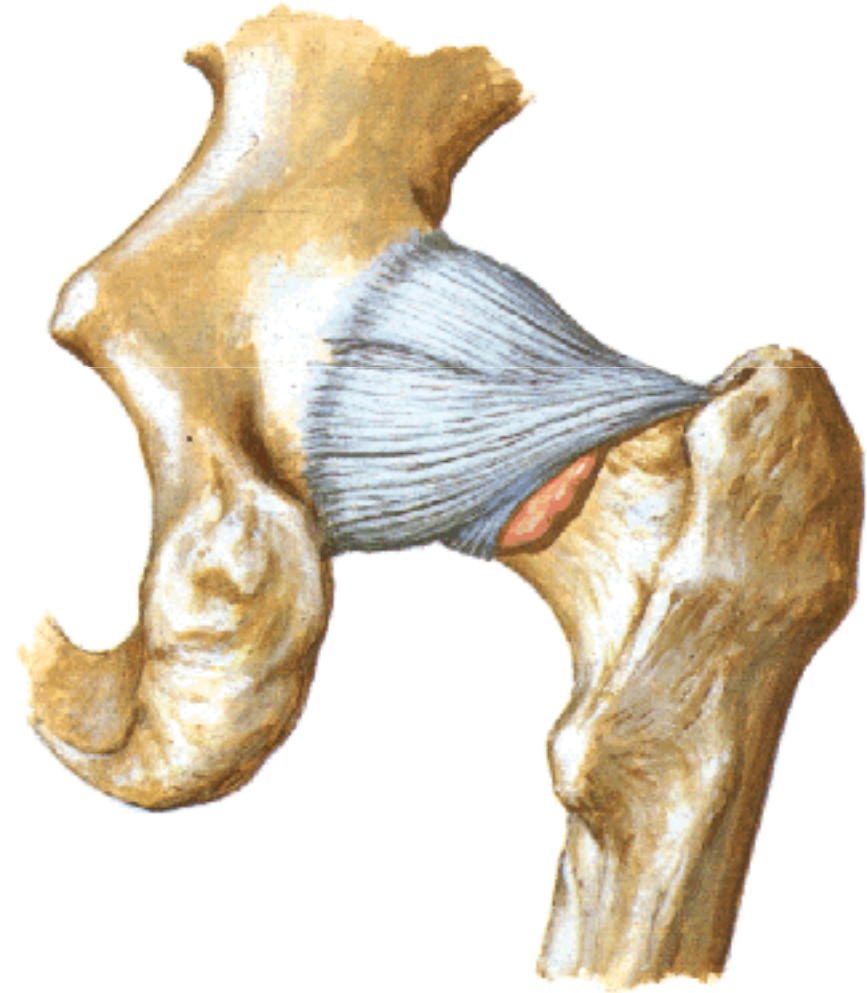
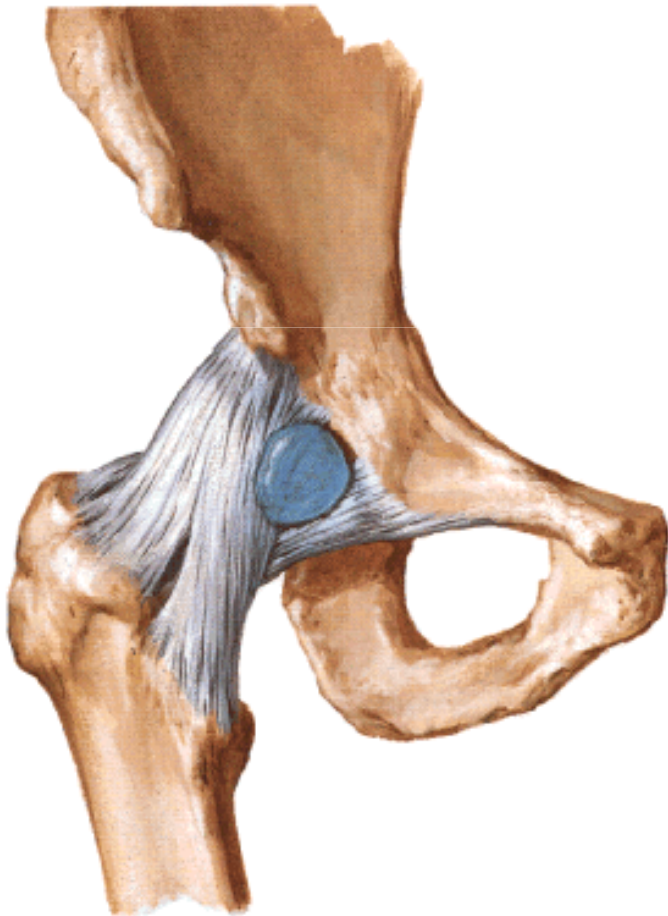




# Artrología

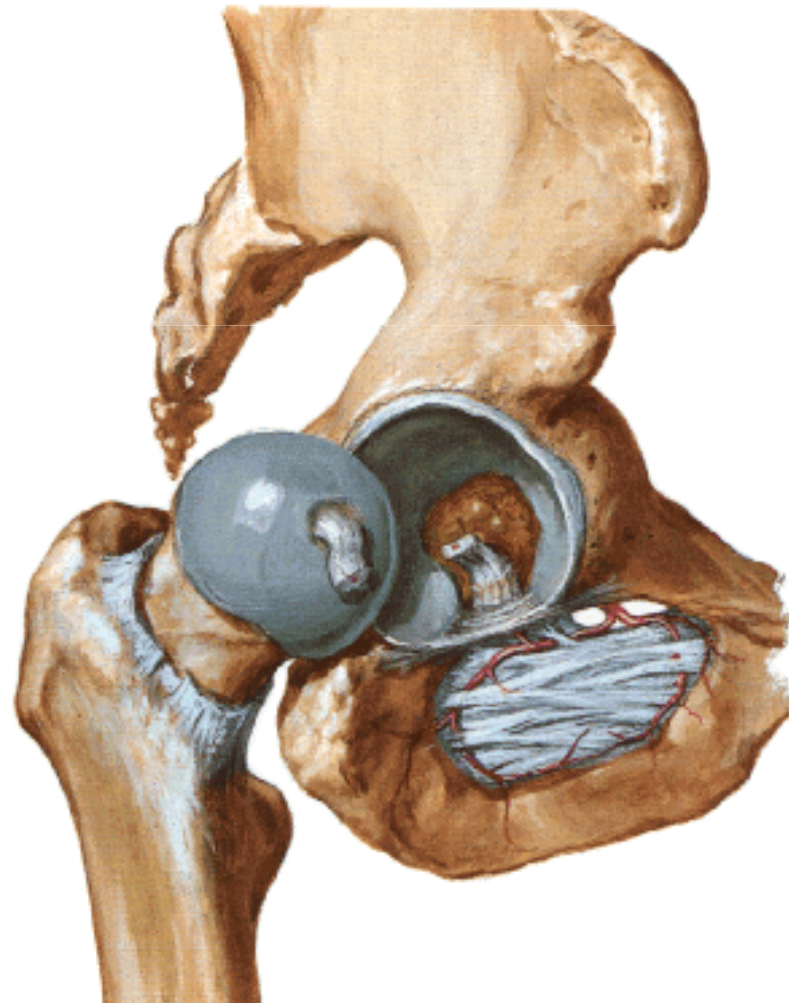


# Art. Coxofemoral



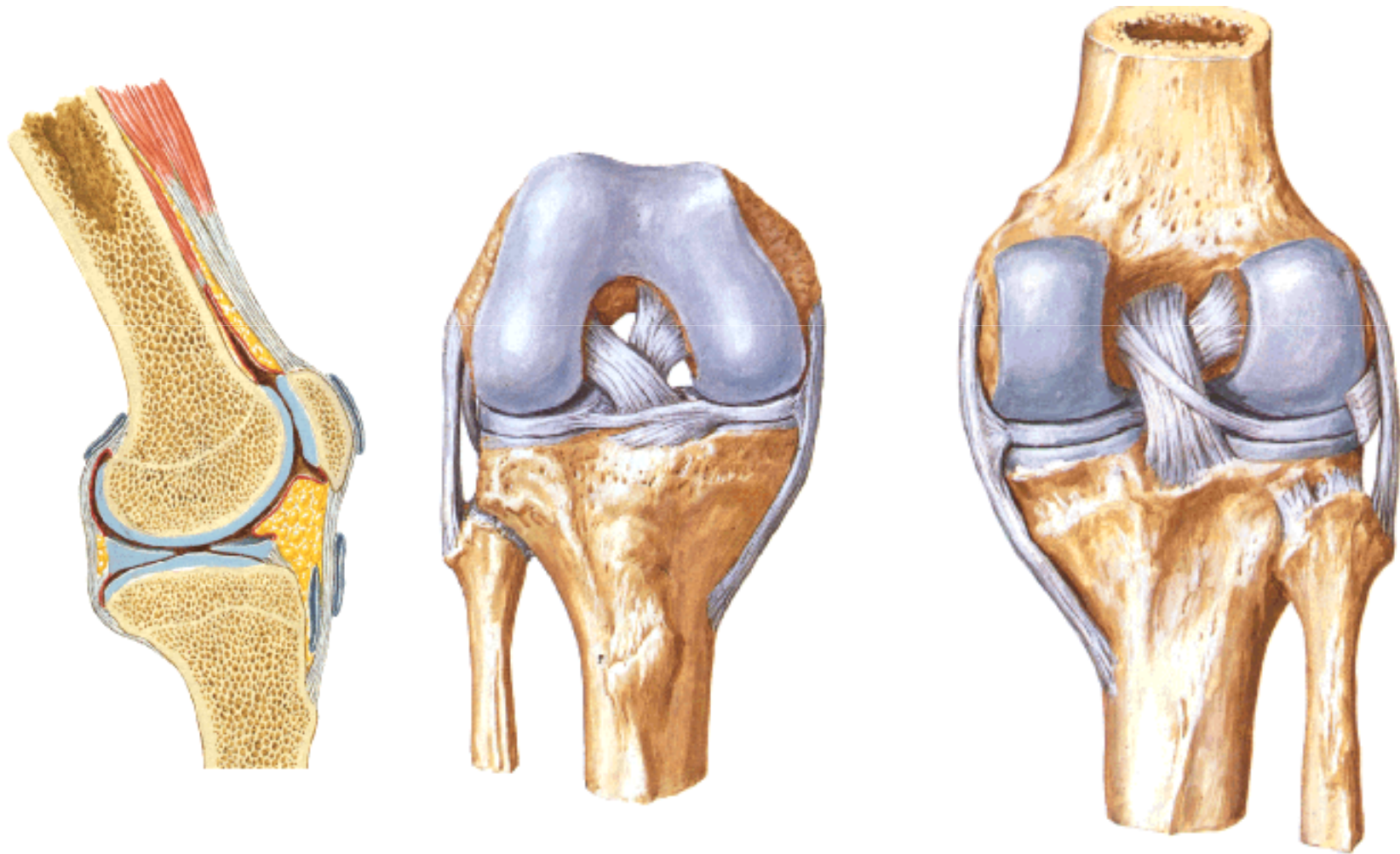


# Art. Coxofemoral





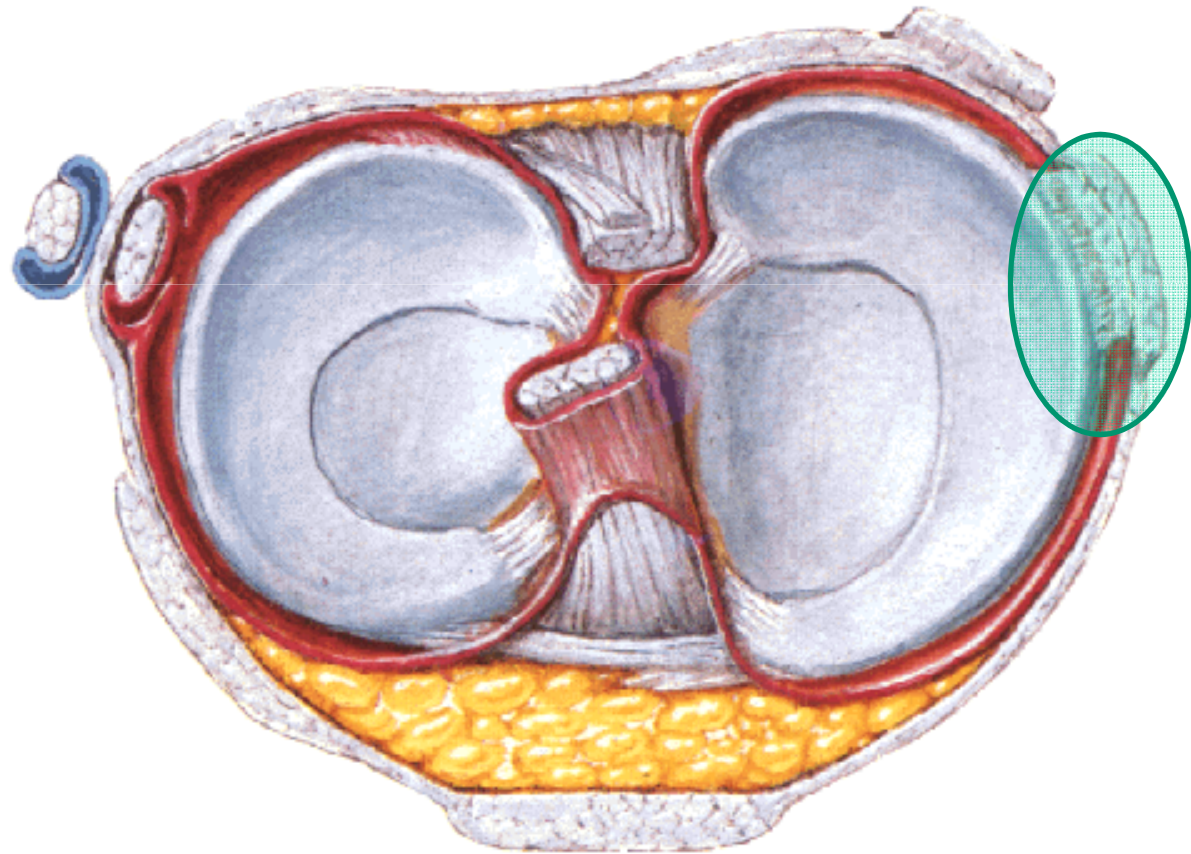
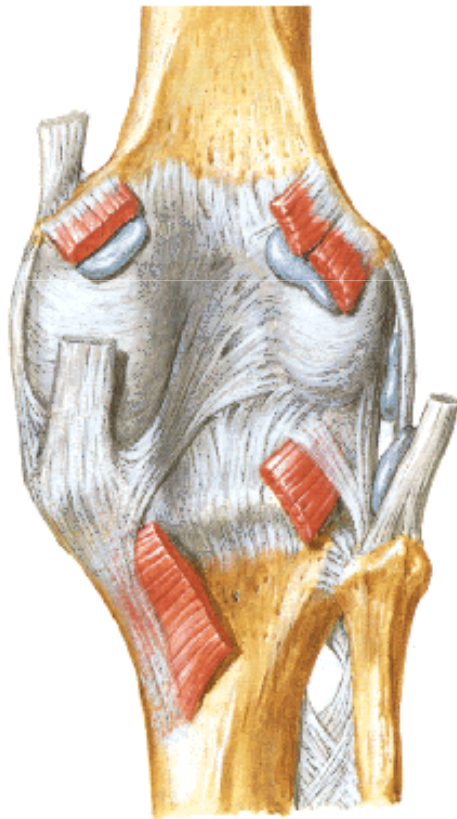
# Art. Femorotibial





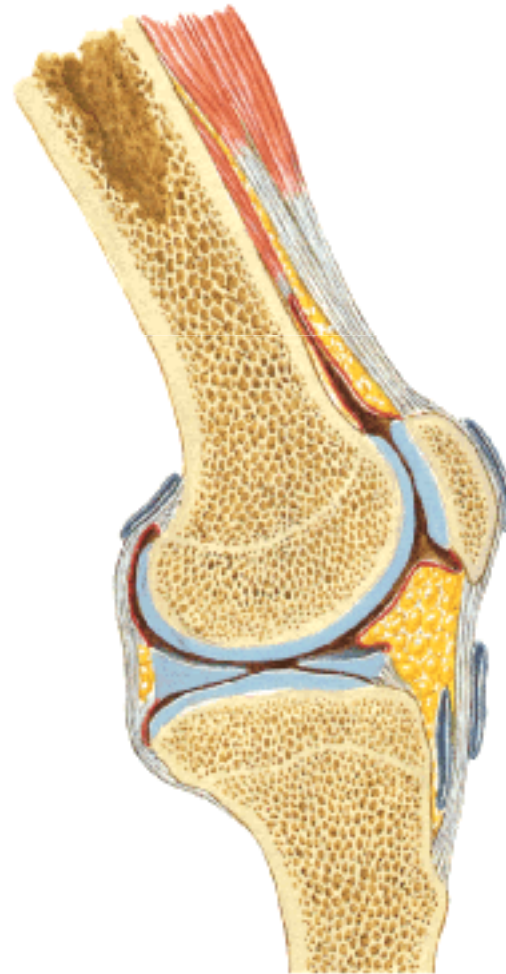
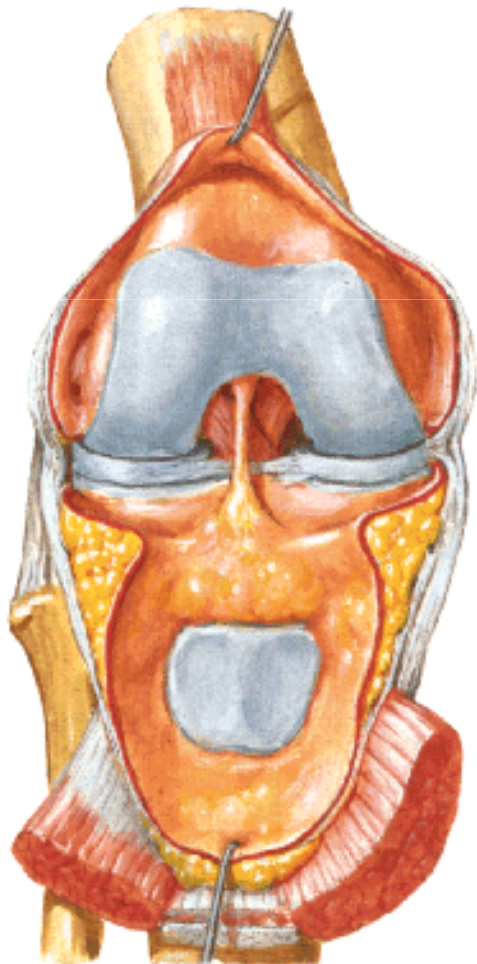


# Art. Femorotibial



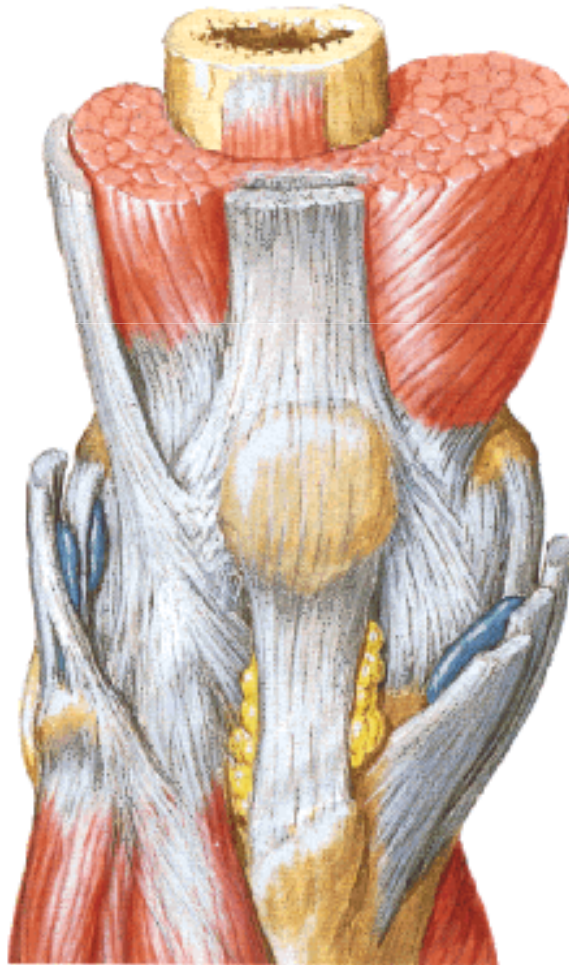


# Art. Patelofemoral



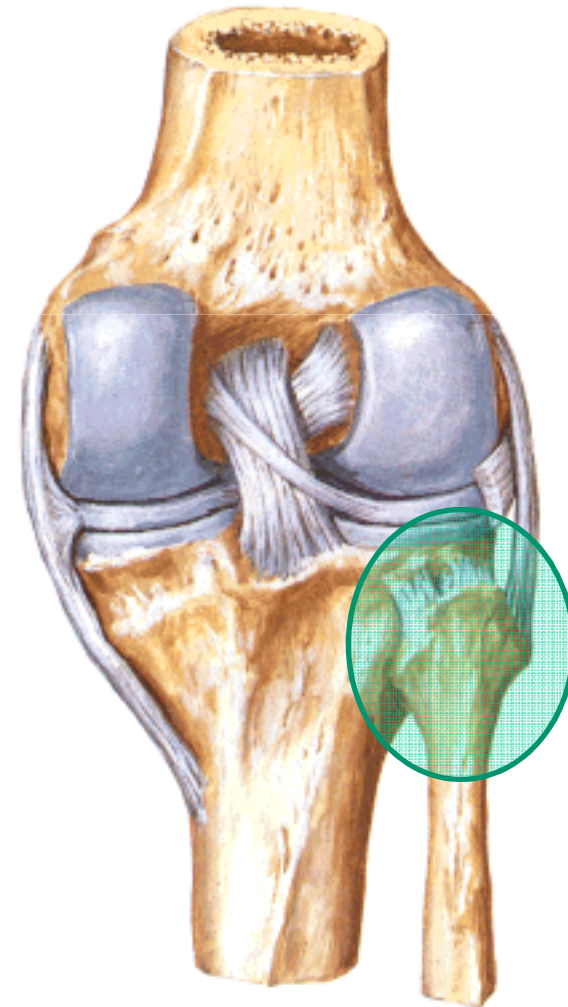
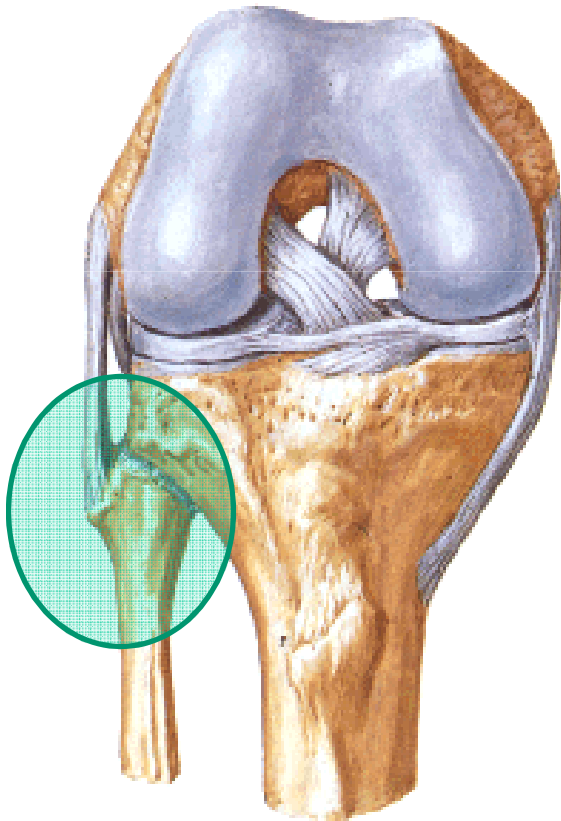


# Art. Patelofemoral



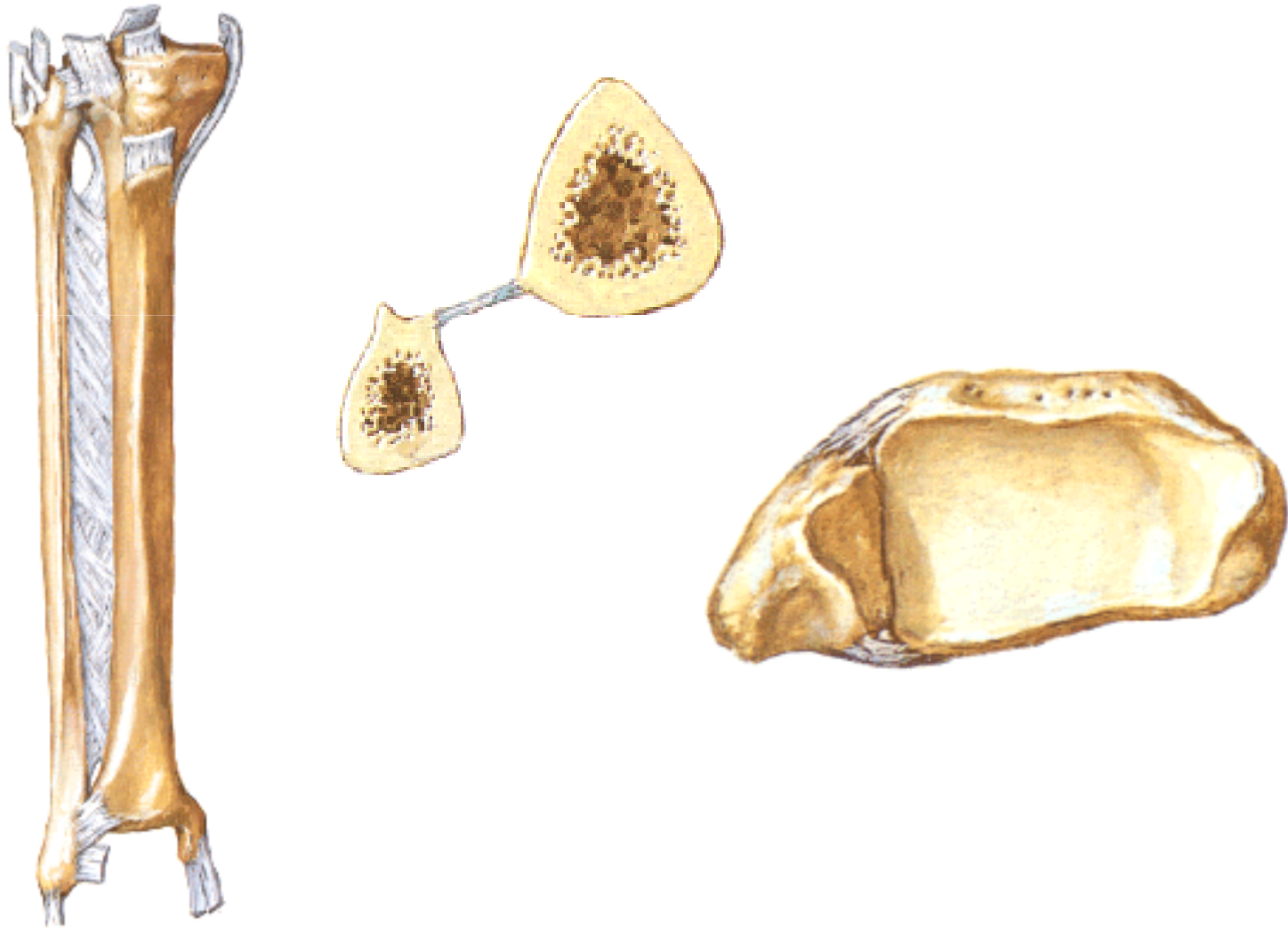


# Art. Tibiofibular



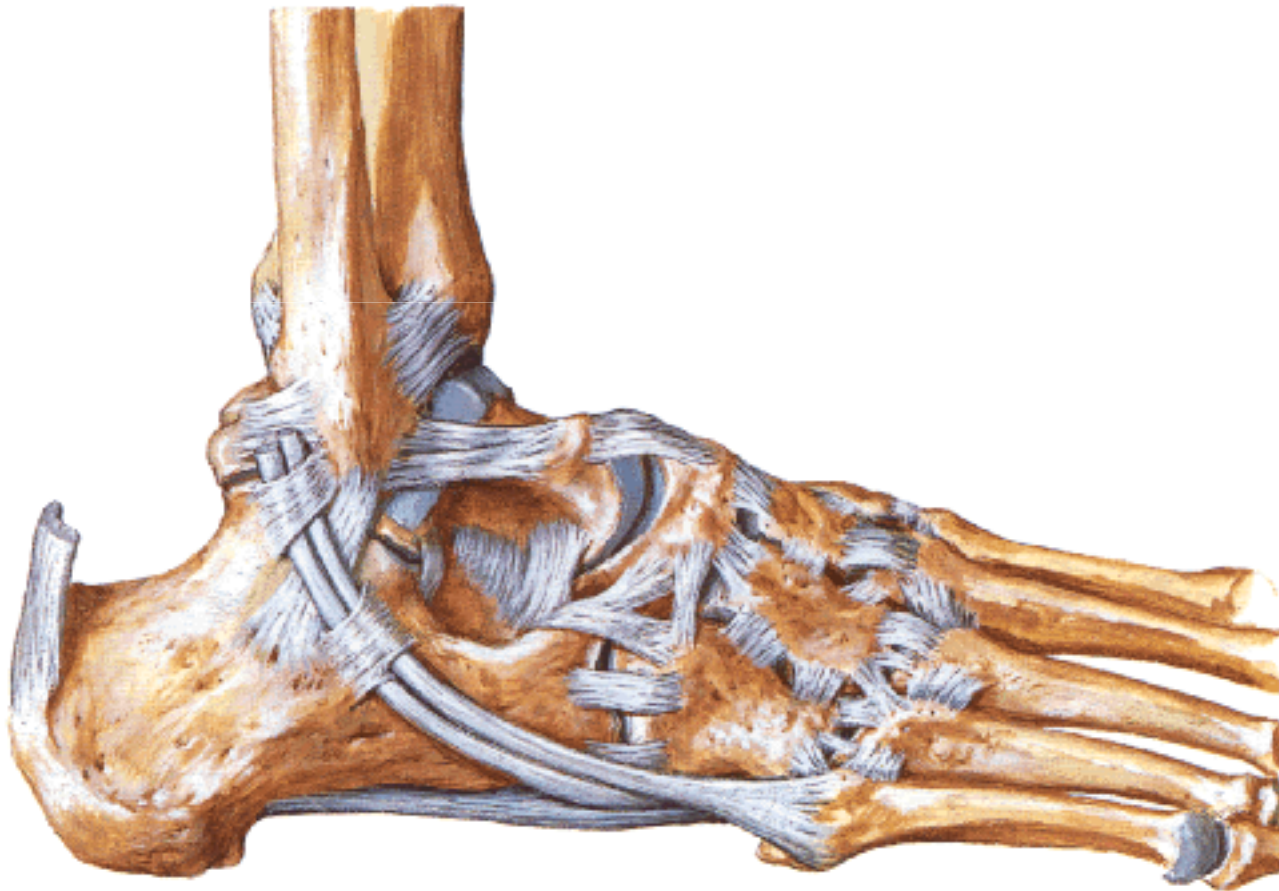


# Syndesmosis Tibiofibular





# Art. Talocrural







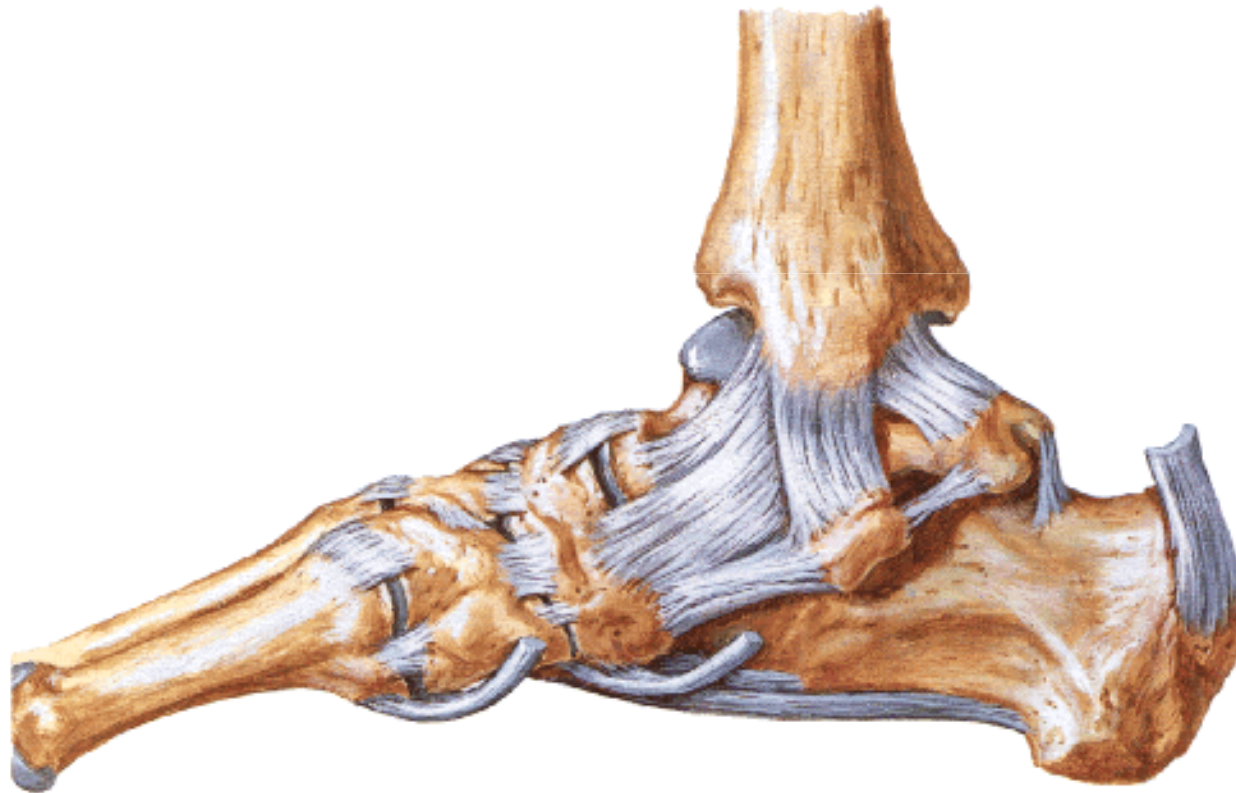
# Articulaciones del Pie







# Articulaciones del Pie





# Articulaciones Pie

