

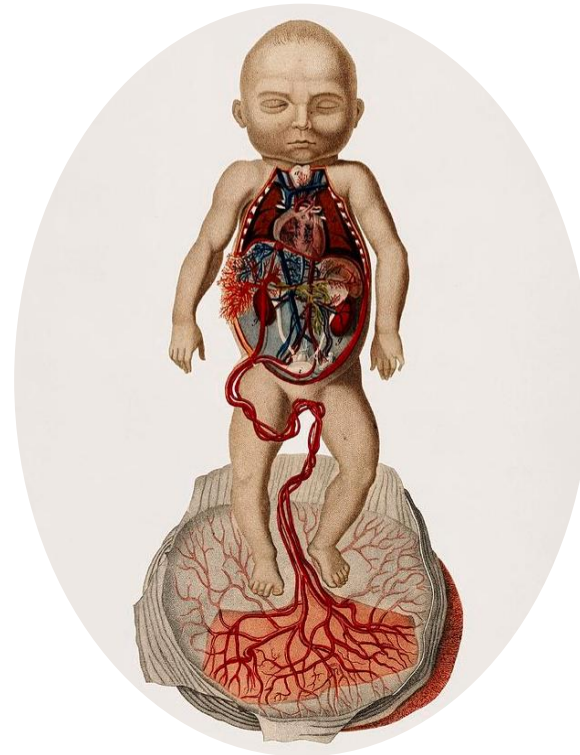


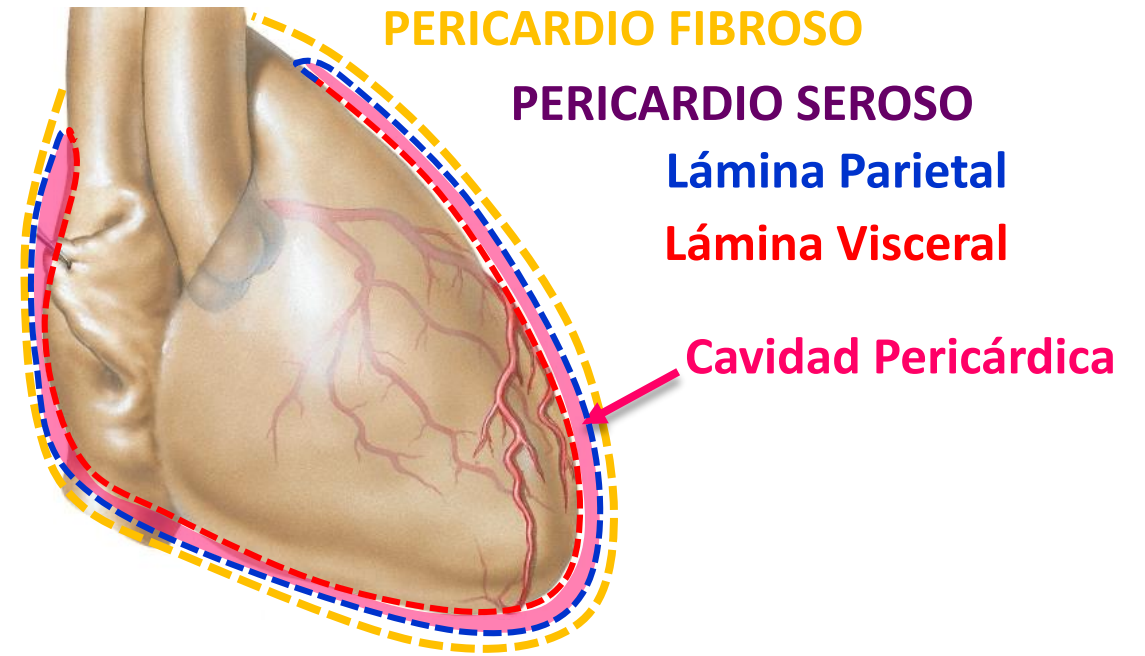
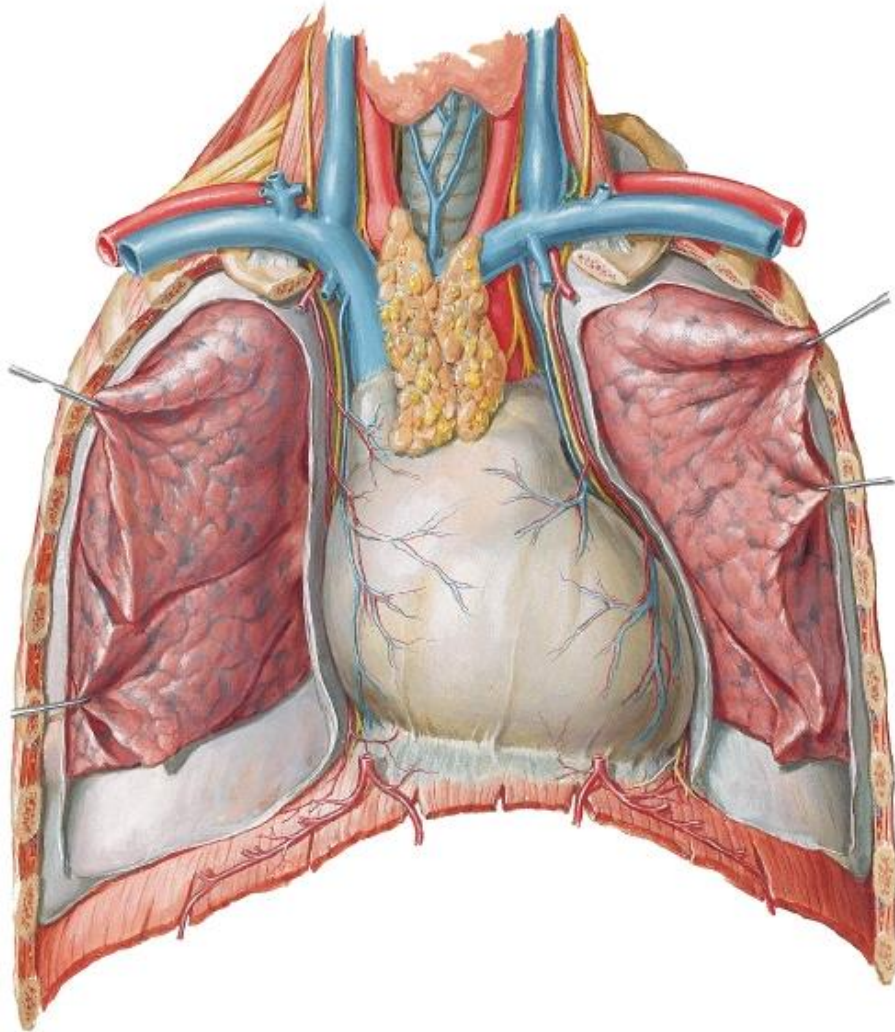
Departamento
de Anatomía y Medicina Legal

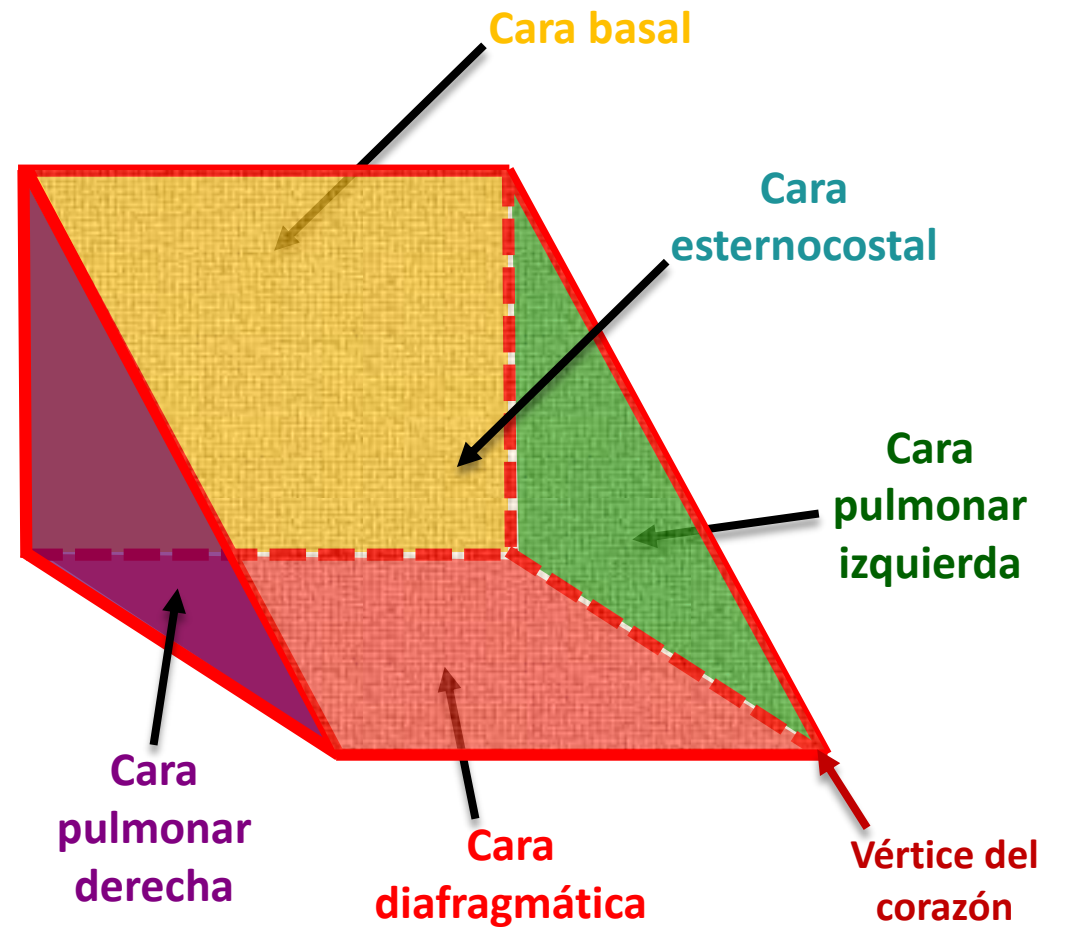
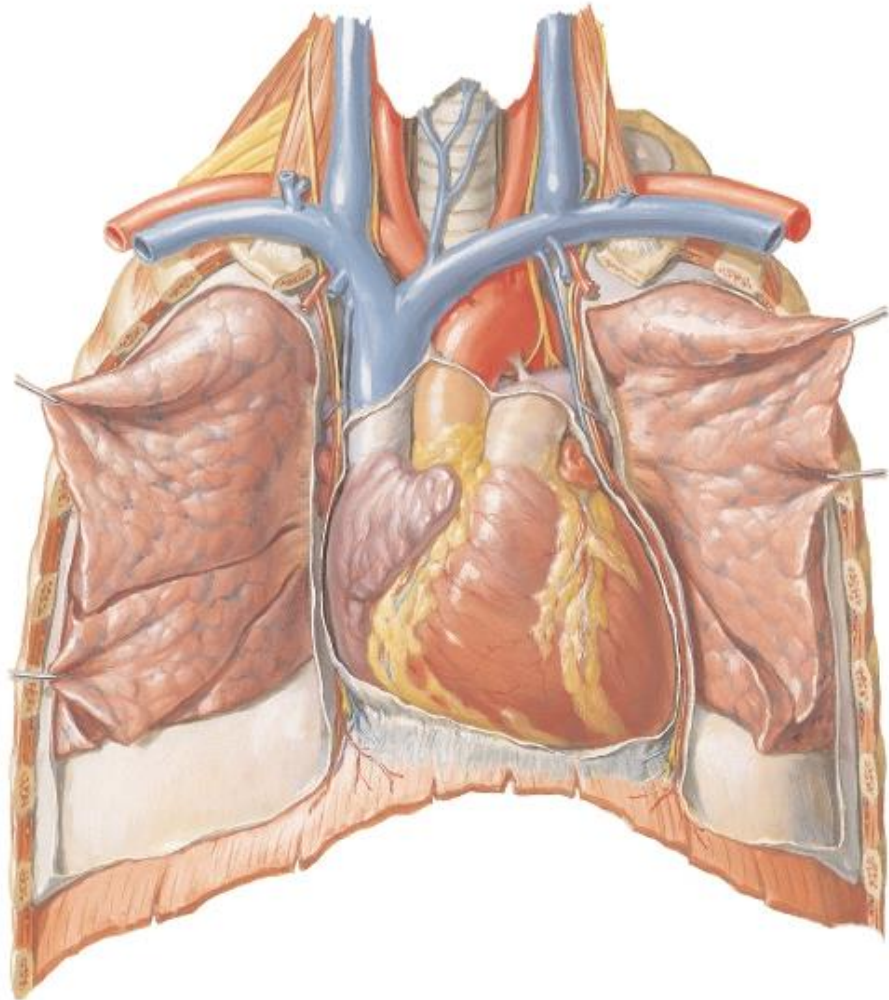
FACULTAD DE MEDICINA
UNIVERSIDAD DE CHILE

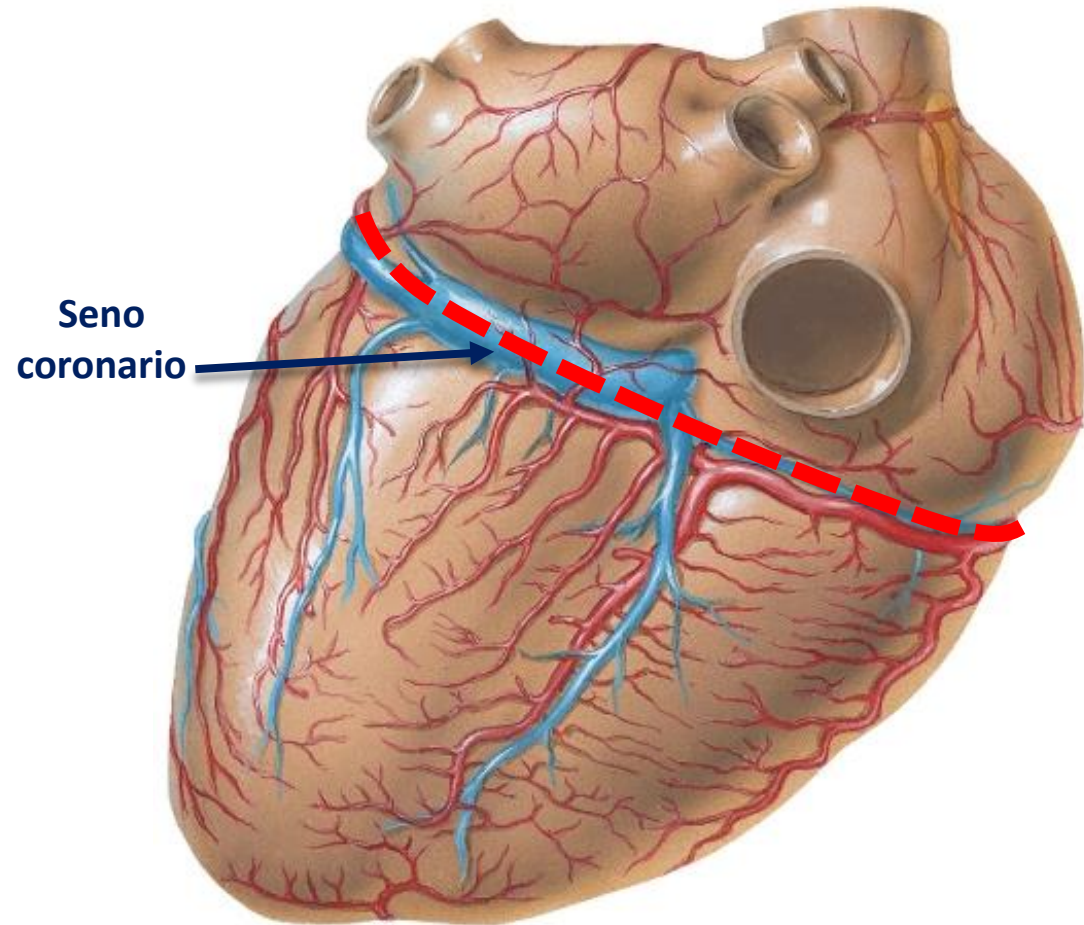
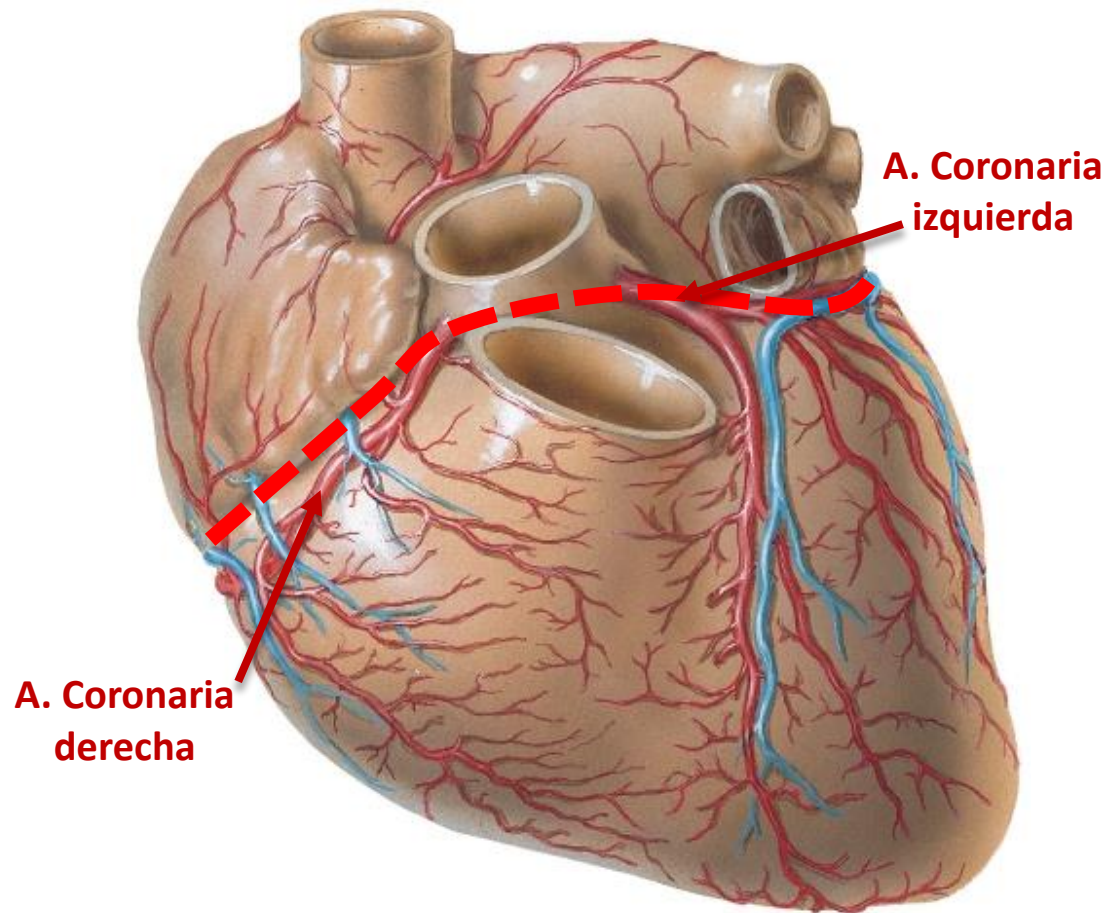
Corazón y Circulación Fetal

TM Gustavo Moreno N

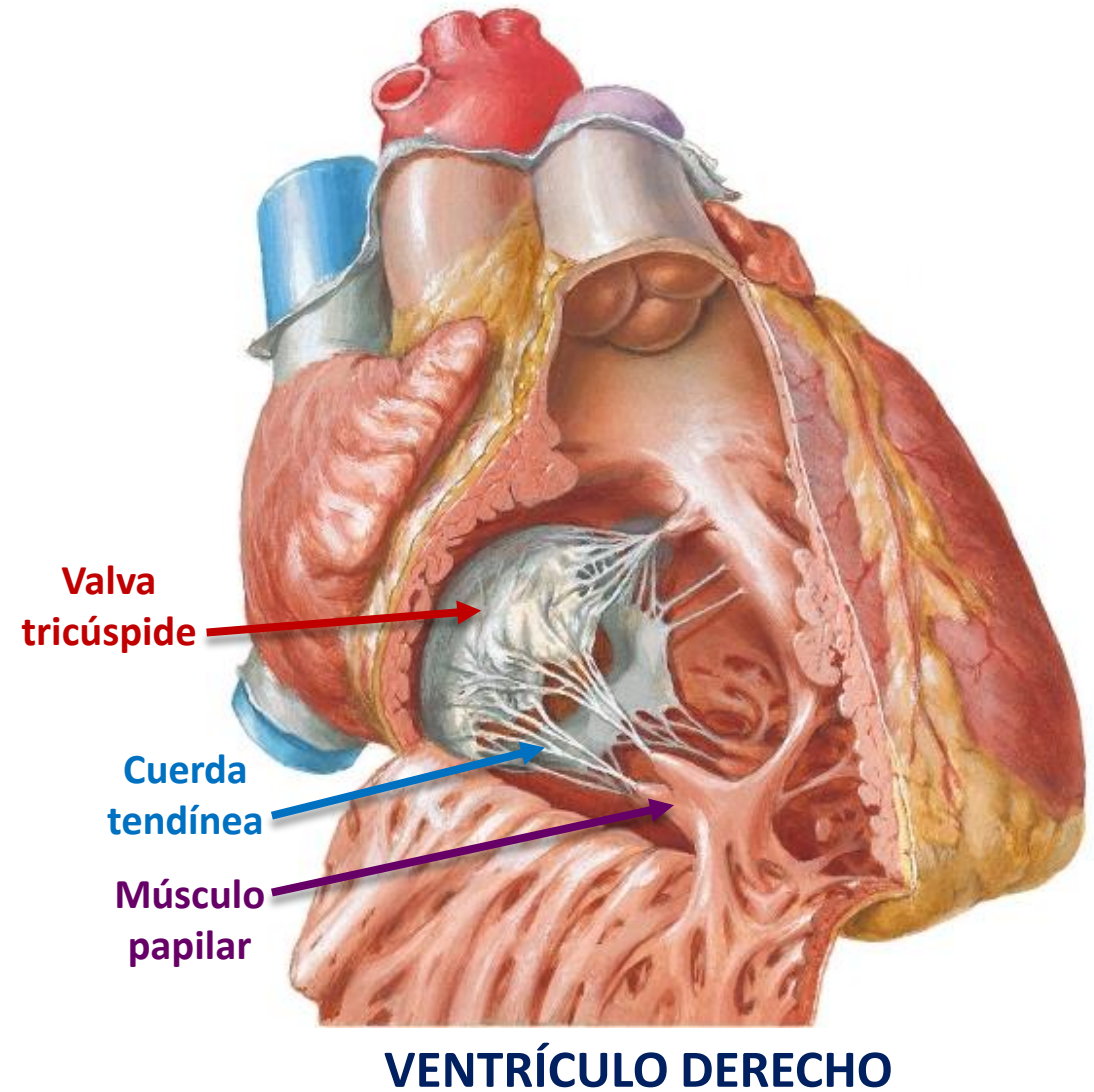
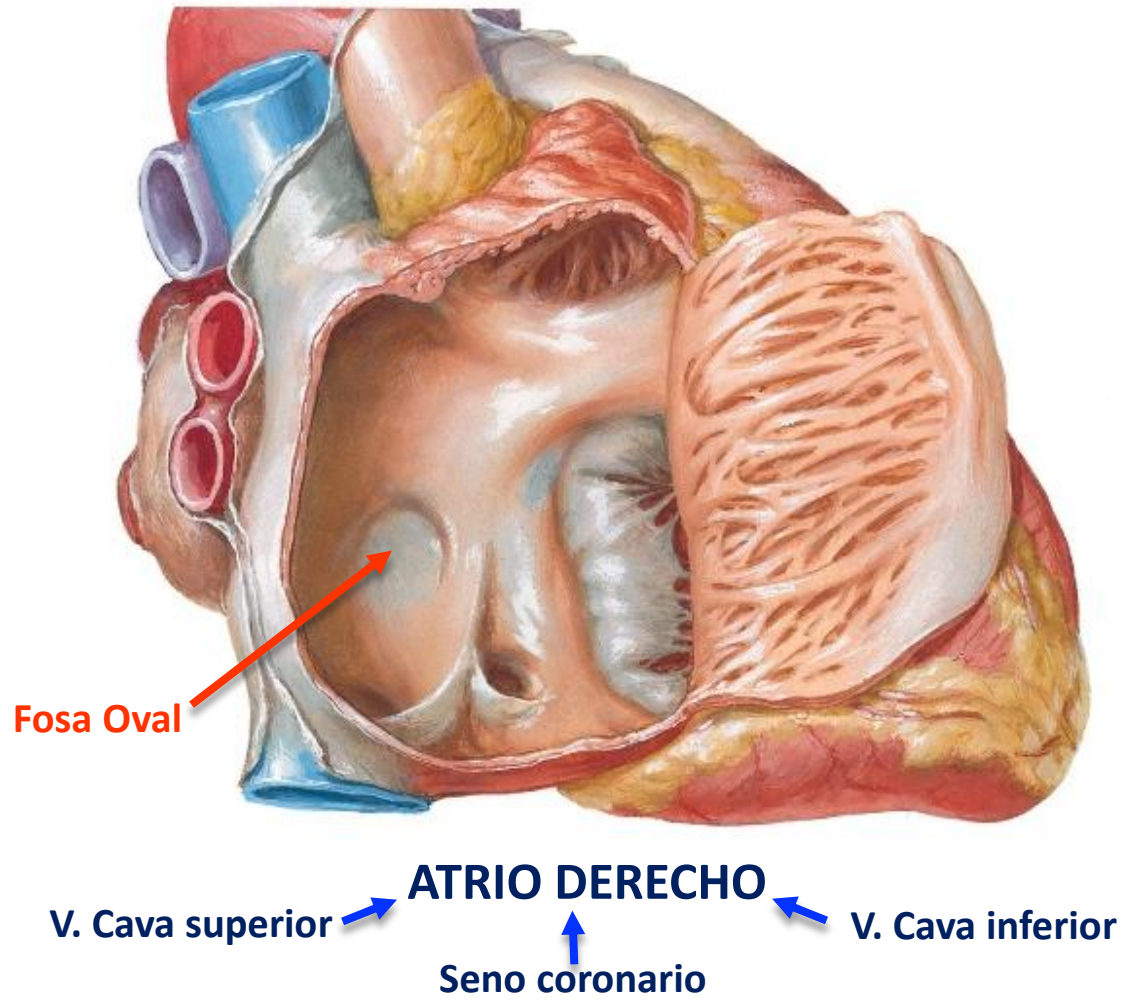


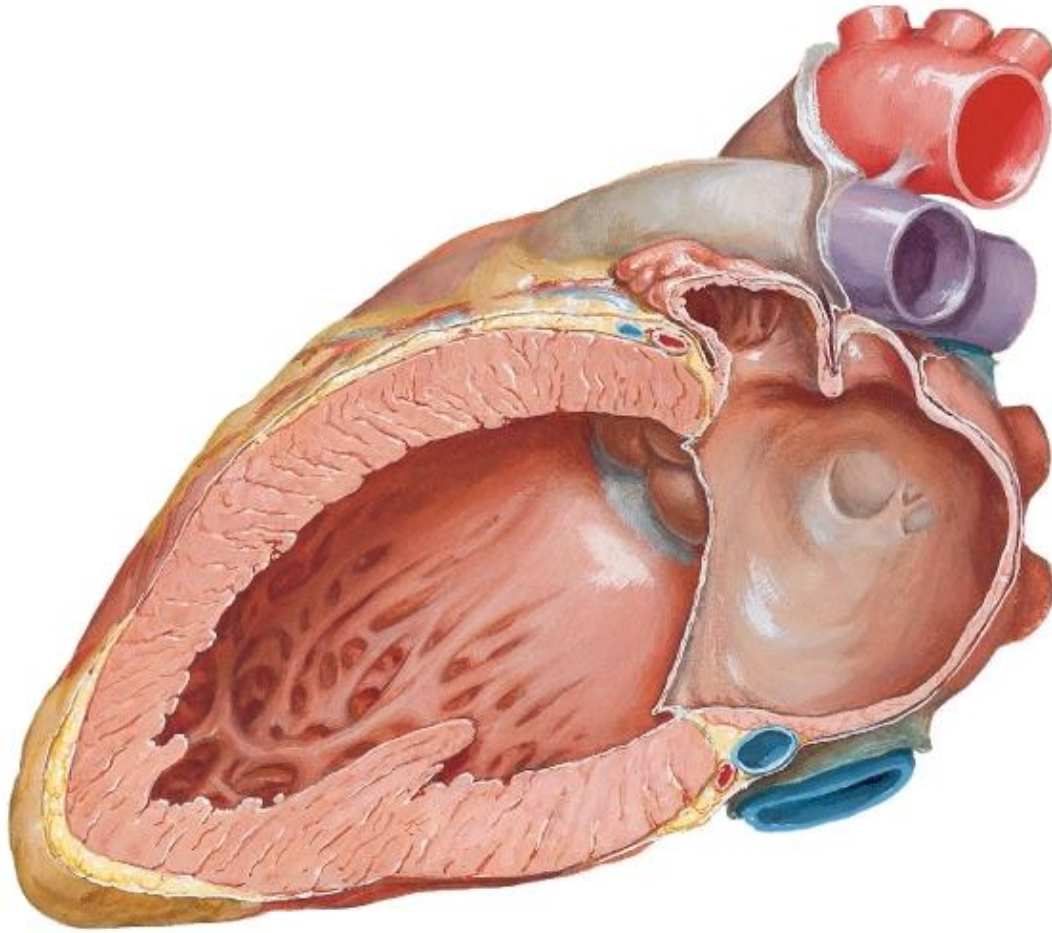




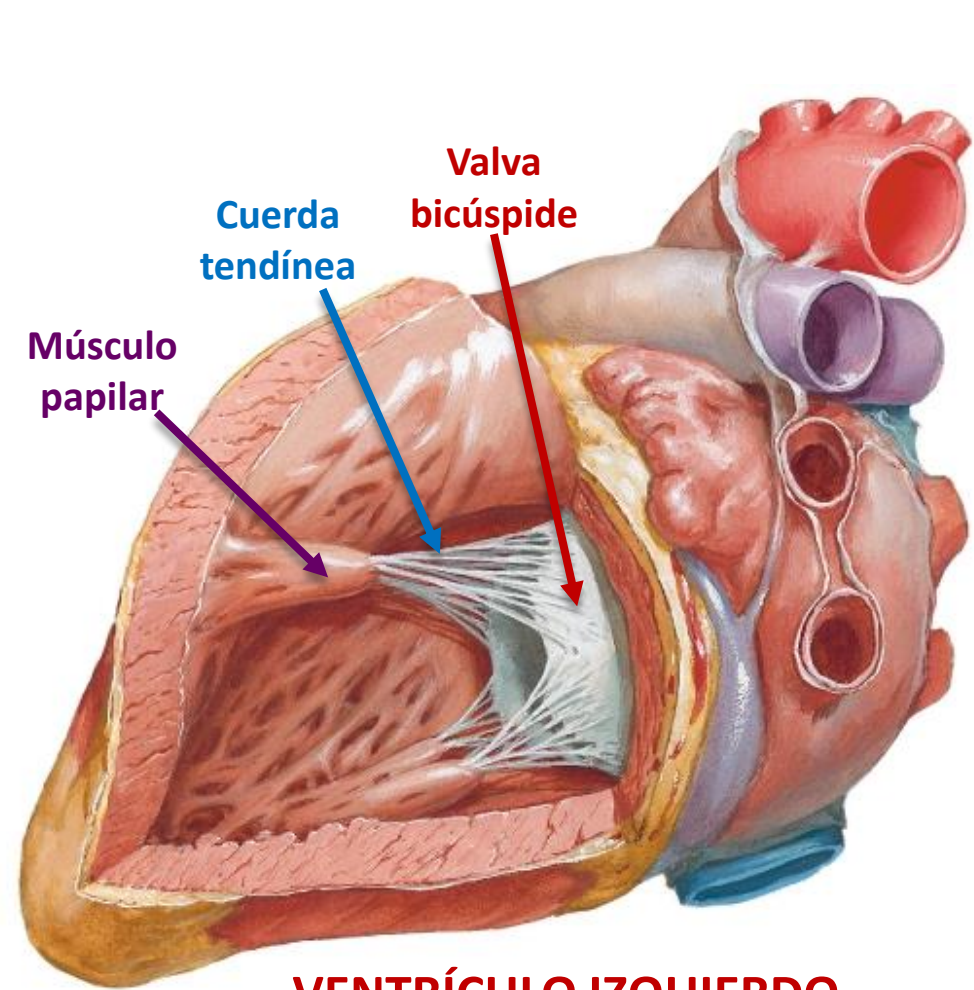


Surco coronario

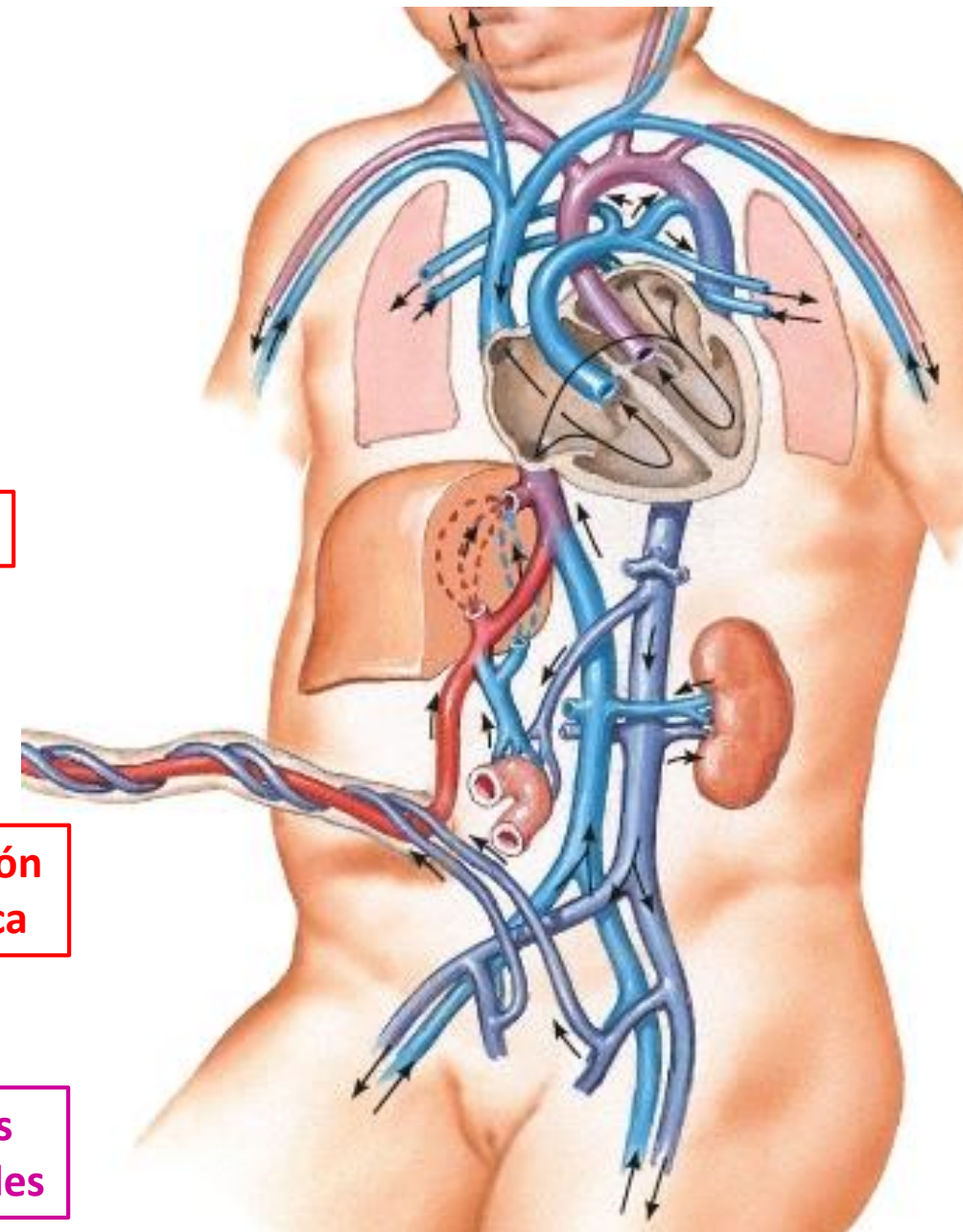
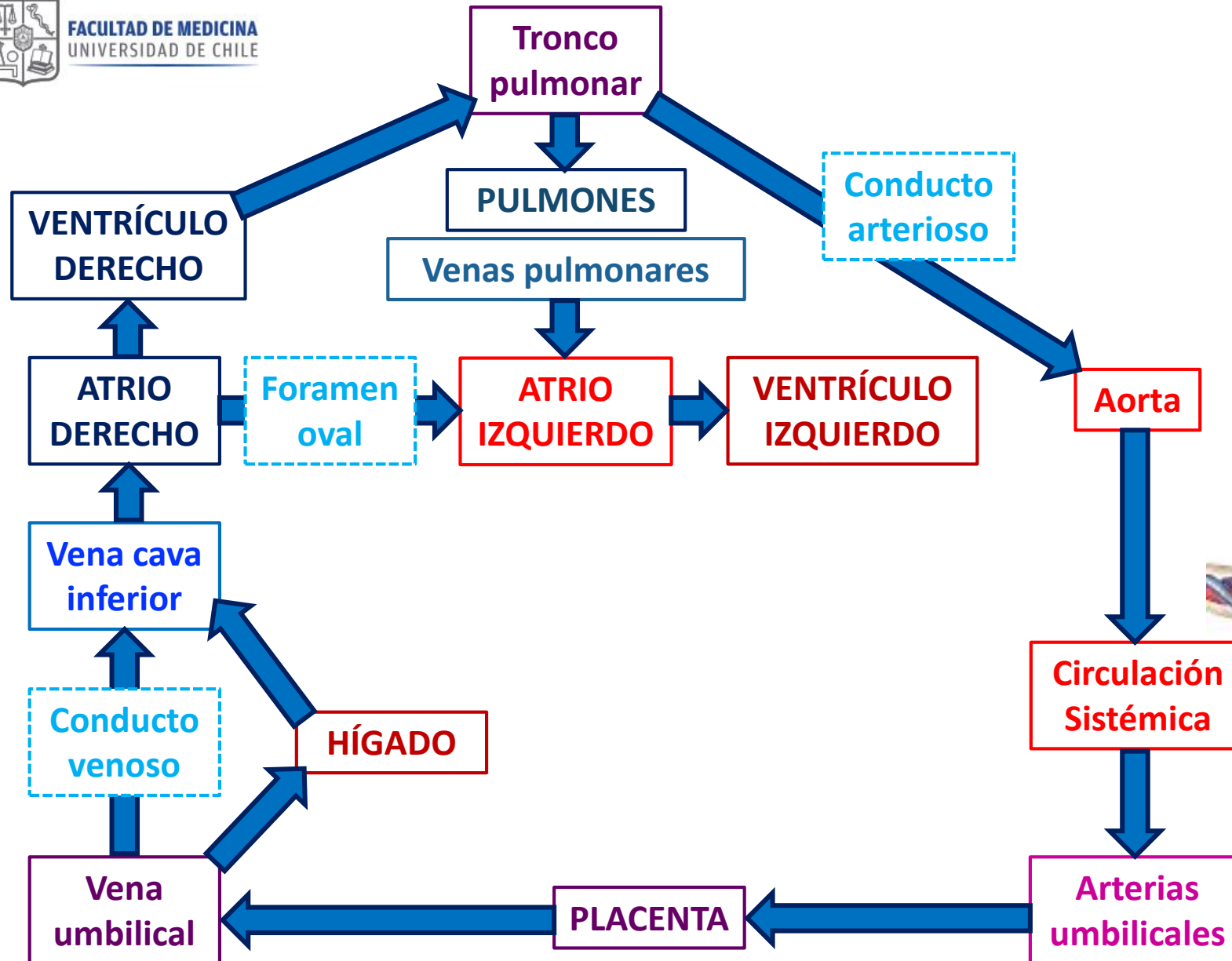


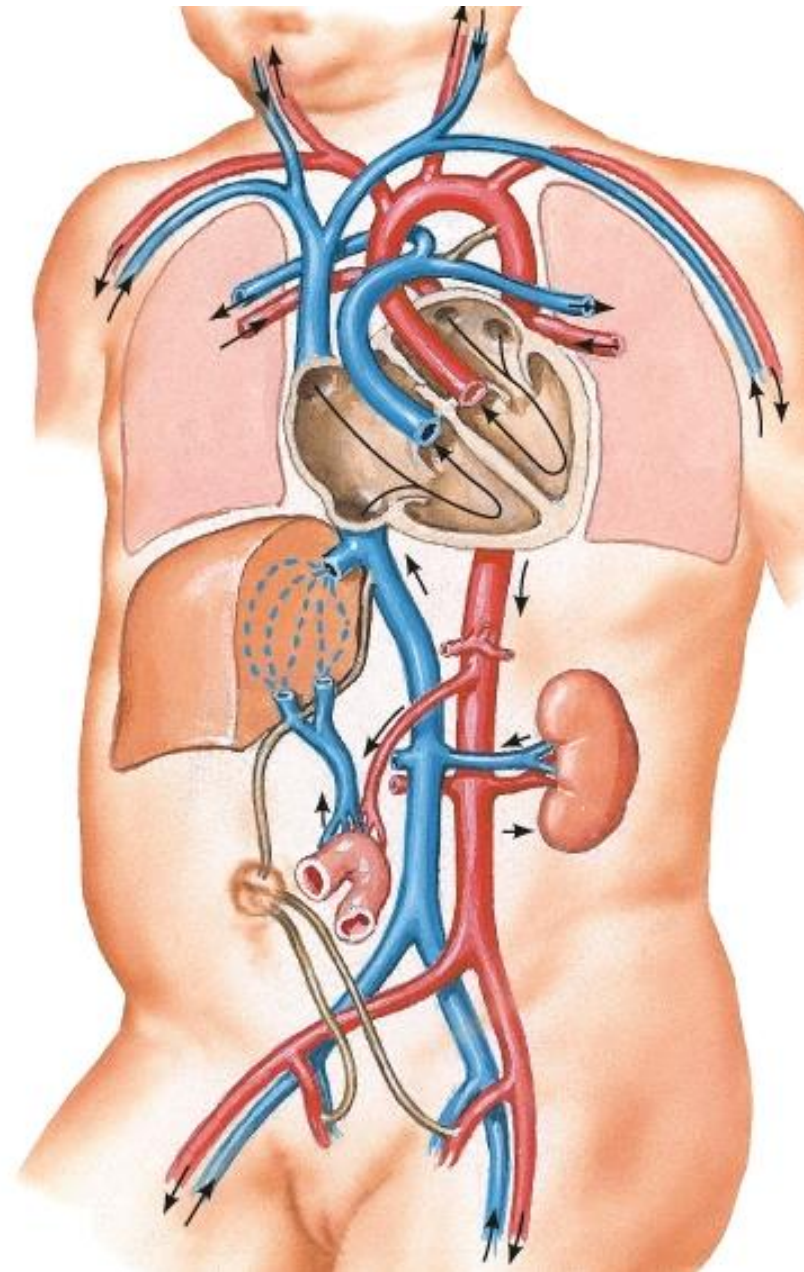
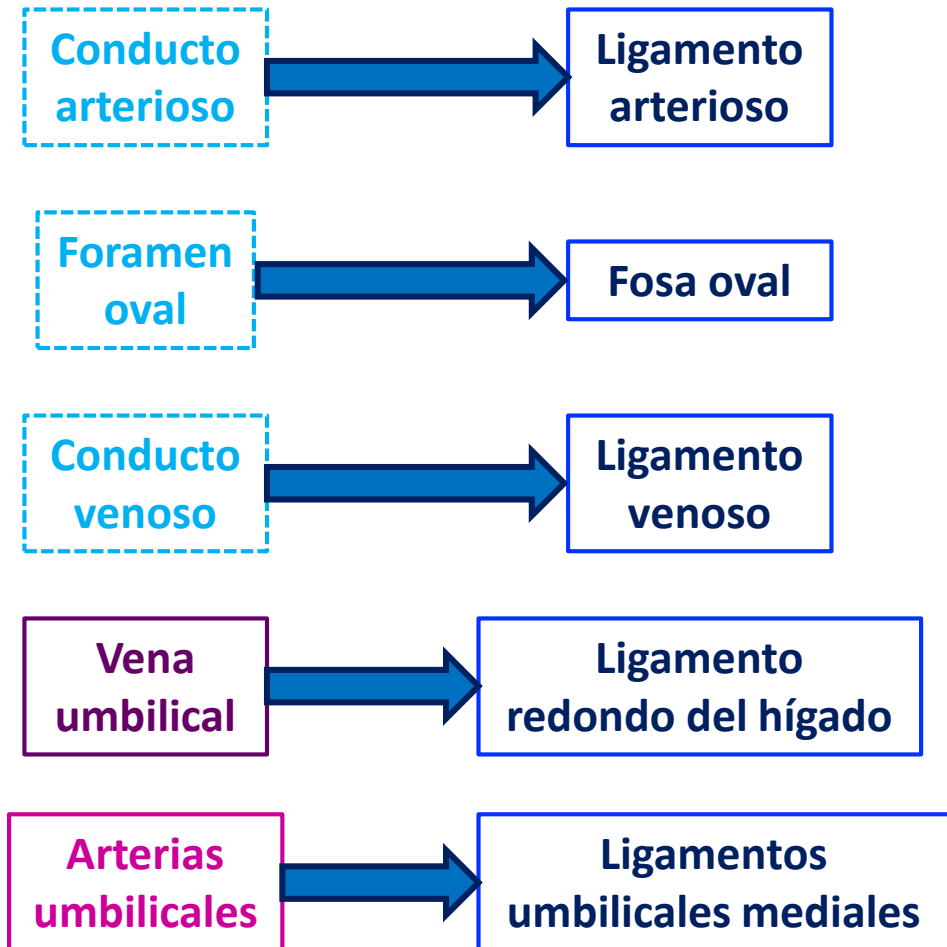


ATRIO IZQUIERDO
Vs. Pulmonares derechas Vs. Pulmonares izquierdas



VENTRÍCULO IZQUIERDO







Departamento
de Anatomía y Medicina Legal

FACULTAD DE MEDICINA
UNIVERSIDAD DE CHILE

Referencias e Imágenes

- Atlas Anatomía Humana, Frank Netter, 1996.
- Gray's Anatomy 15th edition, Henry Gray, 2010.
- Terminología Anatómica, International Anatomical Terminology, 1998. Ed. Panamericana.
- Anatomía Humana, M. Latarjet y A. Ruiz Liard. Ed. Panamericana. 4° Edición.
- Feneis, Nomenclatura Anatómica Ilustrada, W. Dauber. Ed. Elsevier Masson. 5ª Edición.
- Anatomía Humana: Descriptiva, Topográfica y Funcional, Henri Rouvière y André Delmas. Ed. Elsevier Masson. 11° Edición. 2005.

Corazón y
Circulación Fetal

TM Gustavo Moreno N