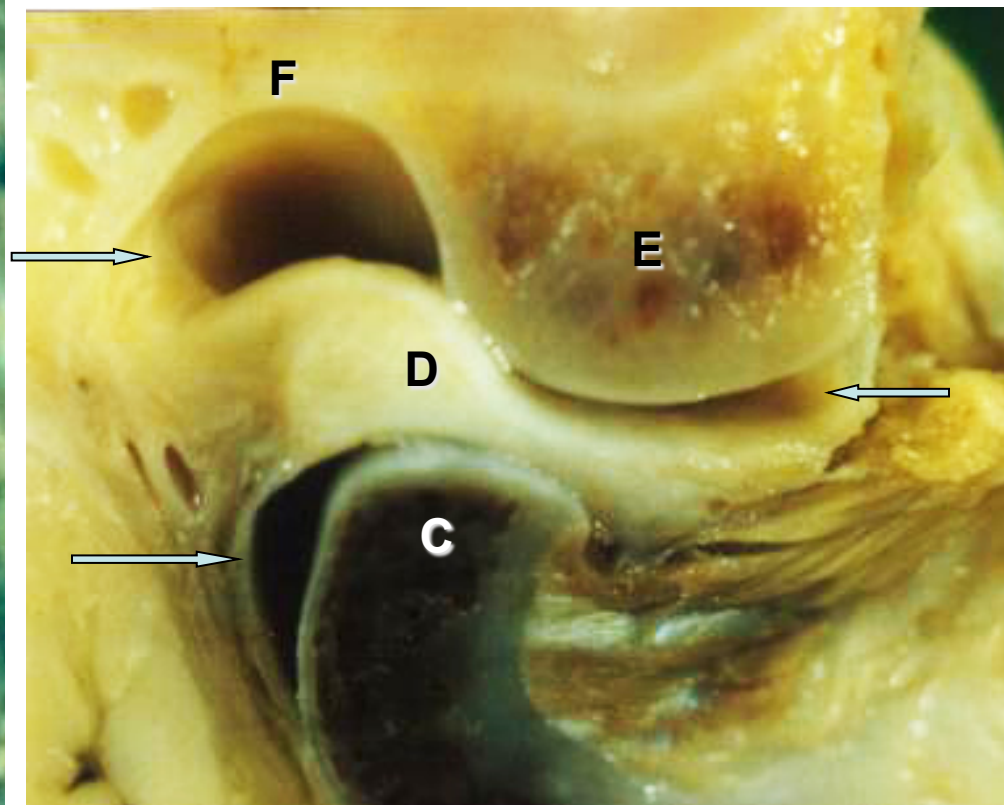
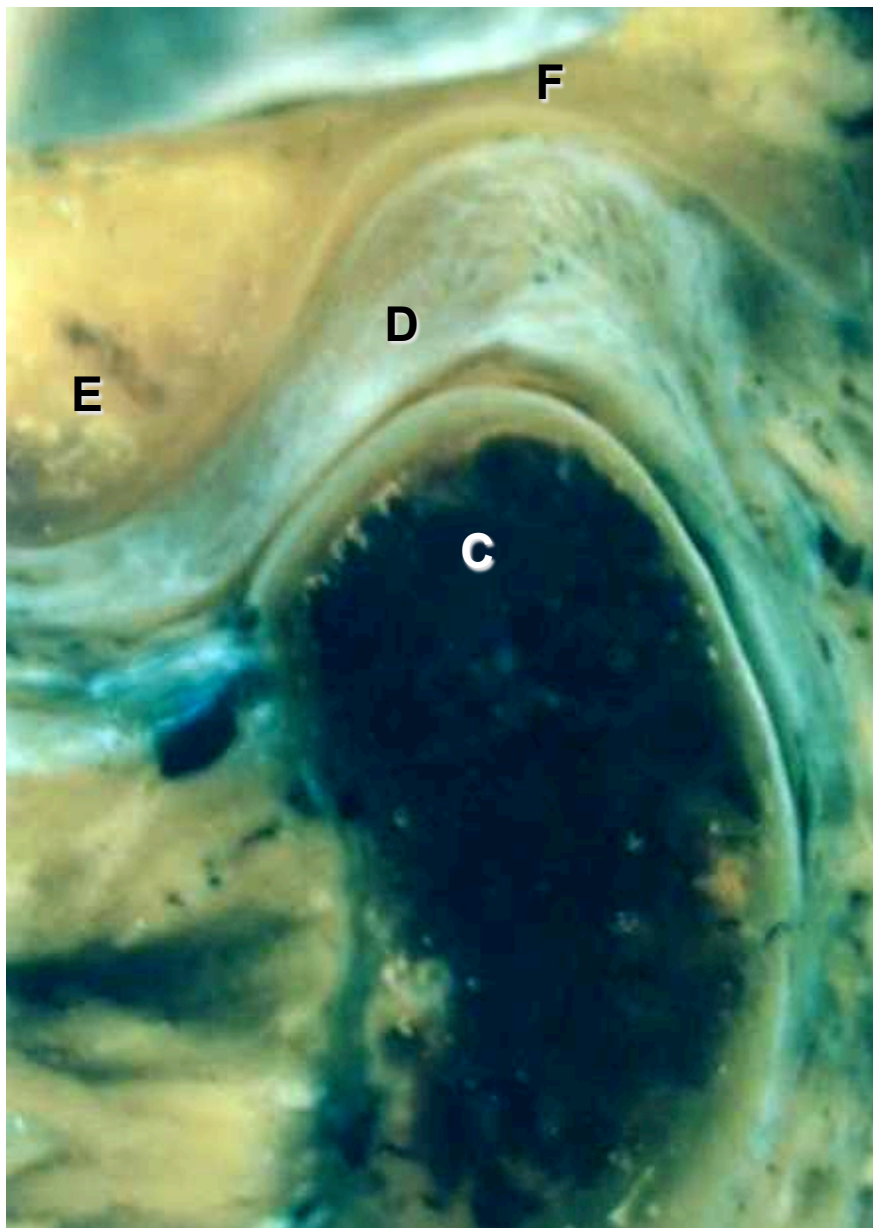
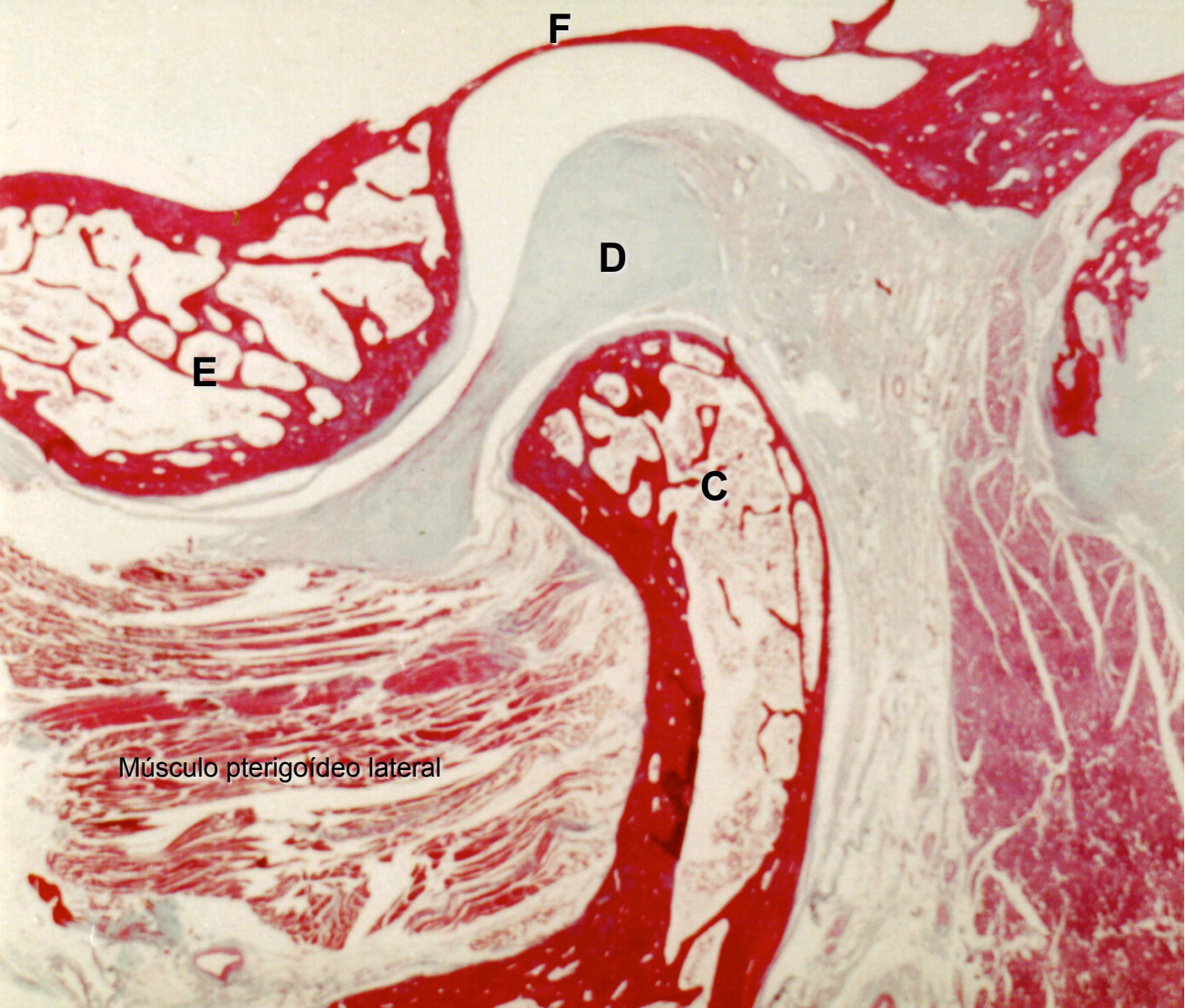


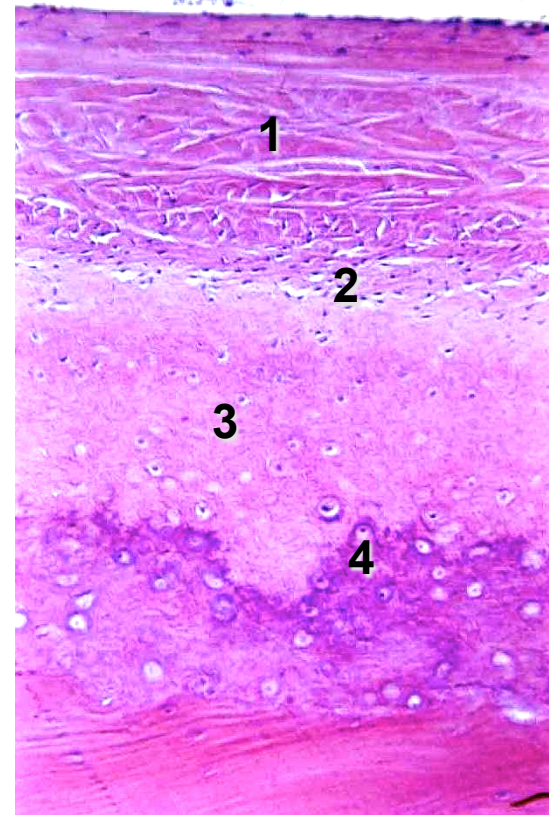
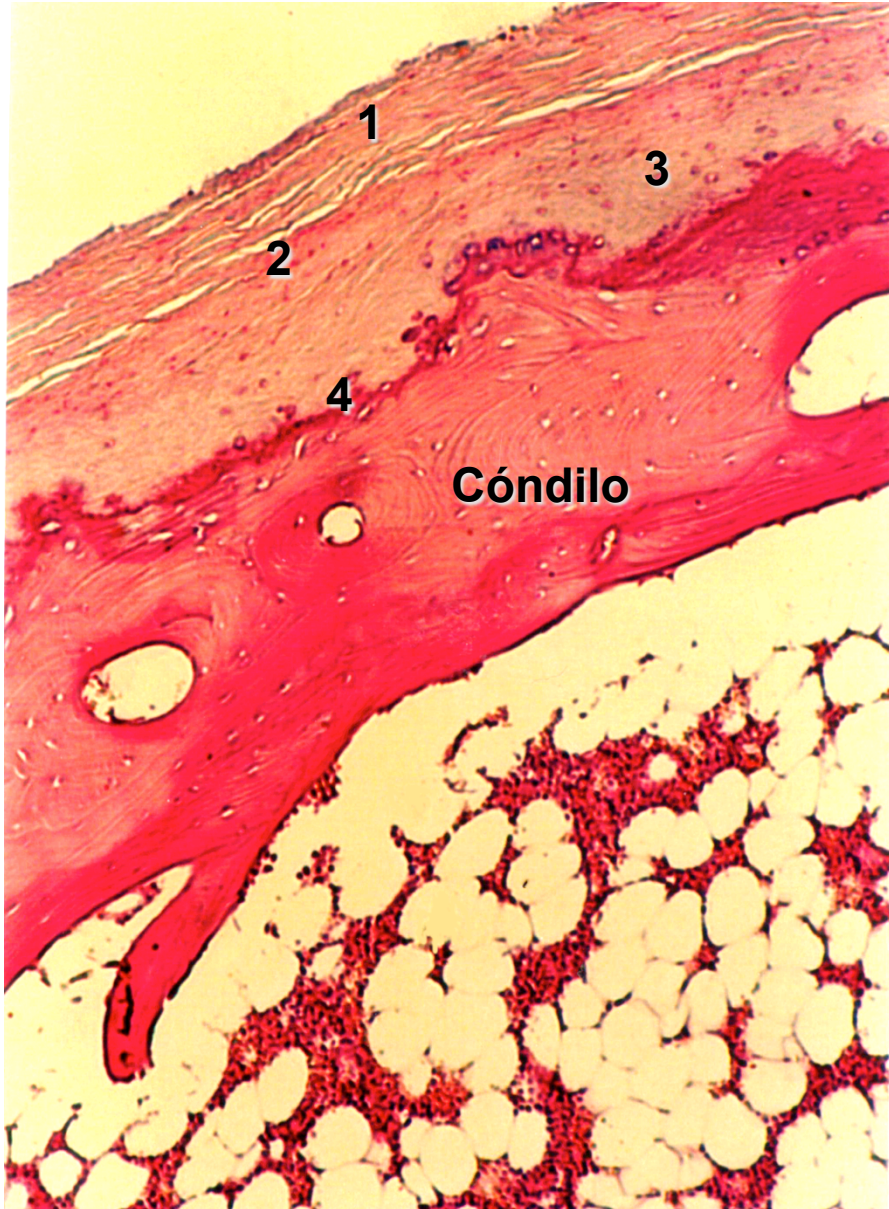
Constituyentes anatómicos de la ATM



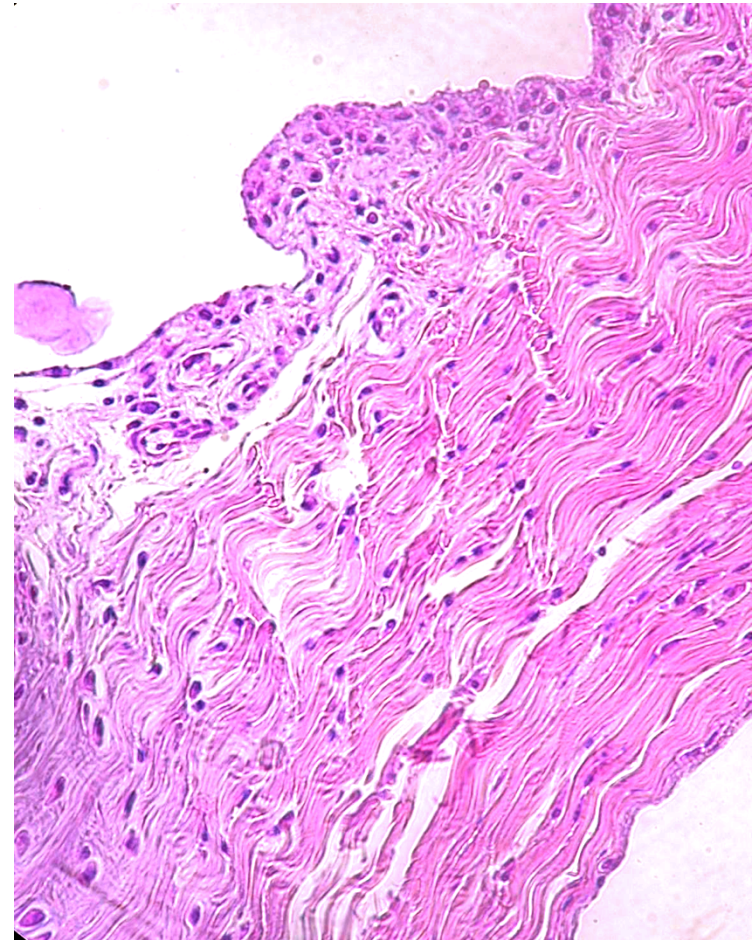
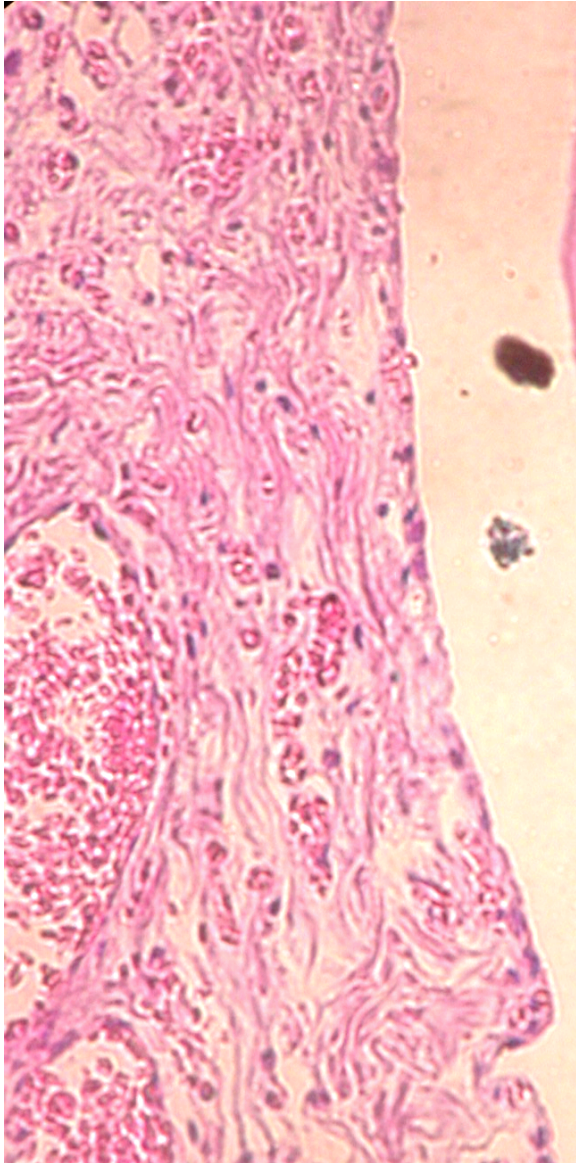
Características microscópicas de la ATM



Superficie del cóndilo mandibular



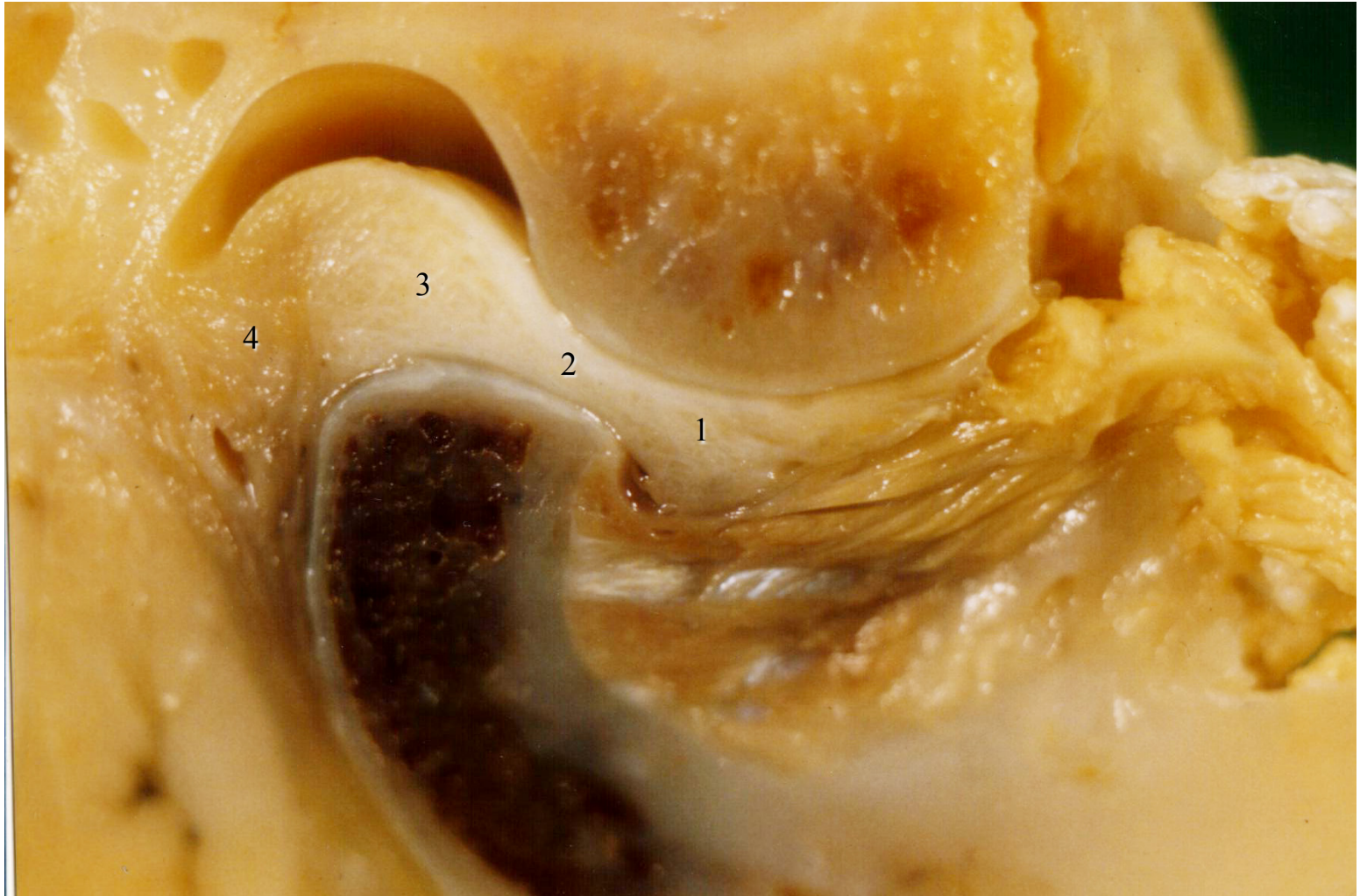
Membrana sinovial



Capa discontinua de **sinoviocitos F y M** apoyados en una capa de tejido conectivo muy vascularizado

Disco articular

1. Zona anterior
2. zona media de trabajo
3. zona posterior
4. zona retrodiscal



Disco articular

