


1 HOLLY AND ROB IN BROOKLYN



a  **4 31**))) Watch or listen to Rob and Holly. Mark the sentences **T** (true) or **F** (false).

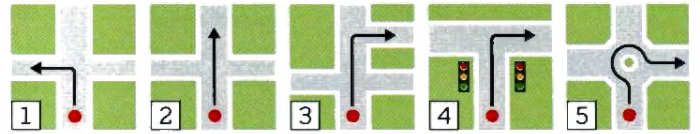
- 1 Rob has just done an interview.
- 2 He is in a hurry.
- 3 He has another interview in Manhattan.
- 4 He has another coffee.
- 5 Barbara phones Rob.
- 6 The restaurant is booked for 7 o'clock.

British and American English

rest room = American English; *toilet* = British English
the subway = American English; *the underground* = British English

b Watch or listen again. Say why the F sentences are false.

2 VOCABULARY directions




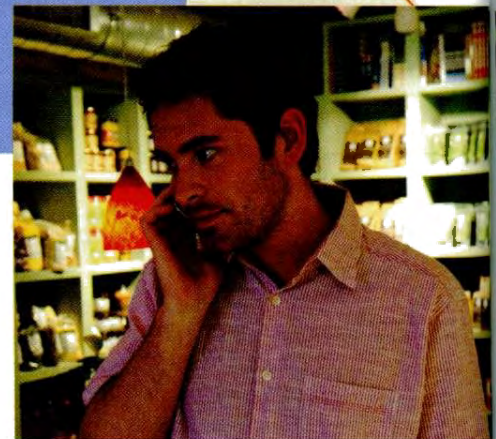
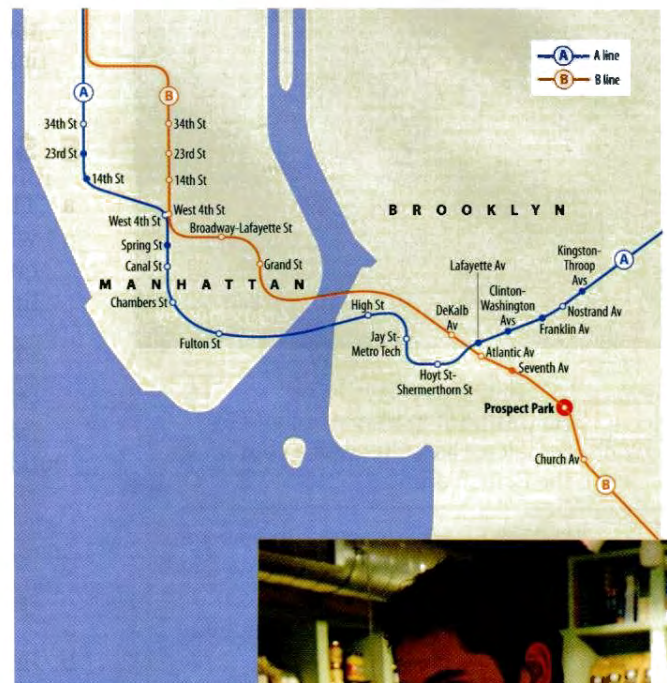
a Look at the pictures and complete the phrases.

- 1 Turn _____.
- 2 Go _____ on.
- 3 Take the _____ turning on the right.
- 4 Turn right at the _____ lights.
- 5 Go round the _____ and take the third exit.


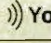
b  **4 32**))) Listen and check.

3 ASKING HOW TO GET THERE

a  **4 33**))) Cover the dialogue and watch or listen. Mark Rob's route on the map.



b Watch or listen again. Complete the **You Hear** phrases.

You Say 	You Hear 
How do I get to Greenwich Village on the subway?	Go to the subway station at Prospect Park. _____ the B train to West 4th Street.
How many stops is that?	Six or seven.
OK. And then?	From West 4th Street take the A train, and get _____ at 14th Street.
Could you say that again?	OK. From Prospect Park take the B train to West 4th Street, and then take the A train to 14th Street. That's only one _____.
Where's the restaurant?	Come out of the subway on Eighth Avenue, go _____ on for about 50 yards and take the _____ left. That's Greenwich Avenue. The restaurant's on the _____. It's called The Tea Set.
OK, thanks. See you later.	And don't get _____!

c **434**) Watch or listen and repeat the **You Say** phrases. Copy the rhythm.


d Practise the dialogue with a partner.

e  In pairs, roleplay the dialogue.

A B is at Prospect Park. Choose a destination on the subway map. Give B directions. You start with *Go to the subway station at...*

B Follow A's directions, and tell A which subway stop you have arrived at. Were you right?

f Swap roles.

 Take the A train to... Then...



4 ROB IS LATE...AGAIN



a **435**) Watch or listen to Rob and Jenny. Is the date a success?

b Watch or listen again and answer the questions.

- 1 What excuse does Rob give for being late?
- 2 How long has Jenny waited for him?
- 3 What does Rob suggest they do?
- 4 What does Jenny say that Rob could do?
- 5 Who is Rob interested in: Holly or Jenny?

c Look at the **Social English phrases**. Can you remember any of the missing words?

Social English phrases

Rob I'm so _____.

Rob I _____ I'm sorry.

Jenny I don't want to _____ here any more.

Jenny I don't _____ like a walk.

Jenny It's been a _____ day.

Jenny I didn't _____ to say that.

d **436**) Watch or listen and complete the phrases.

e Watch or listen again and repeat the phrases. How do you say them in your language?



Can you...?

- give and understand directions in the street
- give and understand directions for using public transport
- apologize